



save
BOARD

planet • performance • price



who we are

saveBOARD is dedicated to transforming the built environment through the development of sustainable building materials. It is committed to reducing waste and promoting a circular economy by converting composite packaging waste and soft plastics into high-performance building products.

Products are made from 99% shredded and compressed composite packaging and soft plastics, with no glues, water, or additives used during the manufacturing process. Proudly produced in Hamilton, New Zealand, and Warragamba, NSW, Australia, saveBOARD building materials are healthy, affordable, and low-carbon—making the circular economy an everyday reality.

Through collaboration with industry partners, stakeholders, and customers, saveBOARD aims to lead the transition to a greener, more sustainable built environment while ensuring that waste is diverted from landfills and re-entered into the local supply chain.



Circular Economy



Every board saves an average of 25kgs of waste from landfill. That's about 400 food and beverages cartons and 1000 pieces of plastic – per board!

Tangible Solutions Customer or operational waste such as soft plastic or fibre, (like redundant marketing collateral etc) can be sent to saveBOARD to be recycled into boards to be used on the project.

Negative Carbon Footprint Based on Cradle to Gate (A1-3) in a product Life Cycle the Global Warming Potential for saveBOARD products has a negative impact per m2, including biogenic carbon.

betterBRACE	-5.51kgCO2/m2	Ceiling Tiles	-7.36kgCO2/m2
Paperfaced	-4.31kgCO2/m2	Multi Use	-10.00kgCO2/m2
Exposed	-7.36kgCO2/m2	betterJOINERY	-13.10kgCO2/m2



Product Stewardship Program Any off-cuts can be returned to saveBOARD to be made into new boards.

End of Life Product at end of life can be returned to saveBOARD and remade into new boards. Boards must be cut to a maximum of 1200mm x 300mm before shipping.

Environmental Product Declaration (EPD) Internationally recognised as a respected environmental certification, an EPD is an independently verified and registered document that communicates transparent and comparable data and other relevant environmental information about the life-cycle environmental impact of a product.

Good Environmental Choice Australia Type 1 Ecolabel - Licence Number UBM-2024

Eco Choice Aotearoa Certified Ecolabel - Licence Number 3223189

Declare All saveBOARD products have a Declare label, meeting the stringent international standards of Living Building Challenge. saveBOARD products are VOC and formaldehyde free.

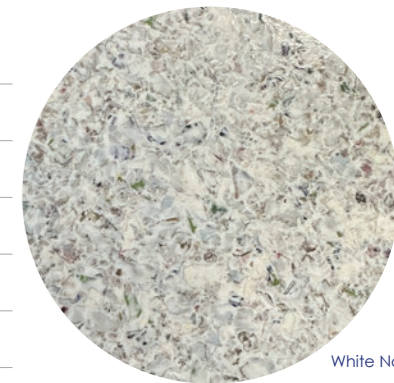
Health and Safety saveBOARD products are VOC and formaldehyde free. No harmful dusts or vapours are generated when working with, or cutting, saveBOARD.

Exposed internal wall & ceiling lining

Description: A pre-finished durable, impact-resistant interior wall and ceiling lining, fixed to a timber frame. The Exposed boards have a recycled LDPE face and a recycled paper back. It can be used as an alternative to plasterboard or plywood, offering high-impact protection, durability, and high-performance bracing. The boards can be custom-made using client-supplied waste to create a unique, on-brand board.

Reference Guide:

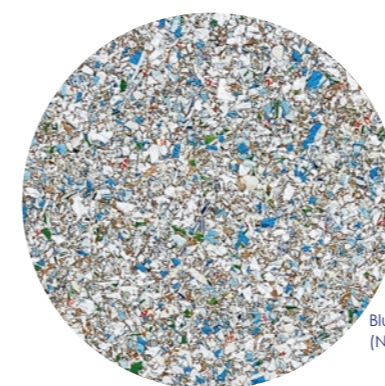
Colours	White Noise, Black, Custom PMS NZ only: Blue
Sheet Size	10mm x 1200 x 2400 2700 3000 (min order x70)
Custom	Custom cut to length 2400-6000mm (min order x70)
Pallet	35
Acoustic	STC 30db
Fire Group Number AS3837	3
Density	750kg/m ³
Bracing	@1200mm BU/m W102 EQ125
Waste Diversion	21kg per 2400mm board 24kg per 2700mm board
Carbon	-7.36kgCO ₂ /m ² including biogenic
Certifications / Ecolabels	Codemark CMNZ70148 EcoChoice Certified & GECA Ecolabels Declare
Limitations	Not for use in wet areas Fix at 400-450mm centres



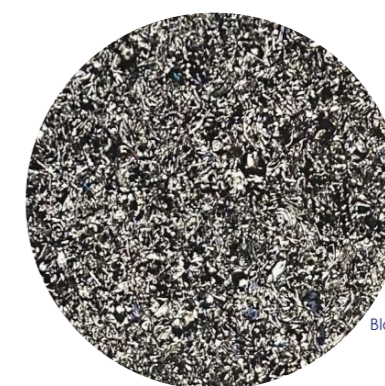
White Noise



Custom Colour



Blue
(NZ only)



Black

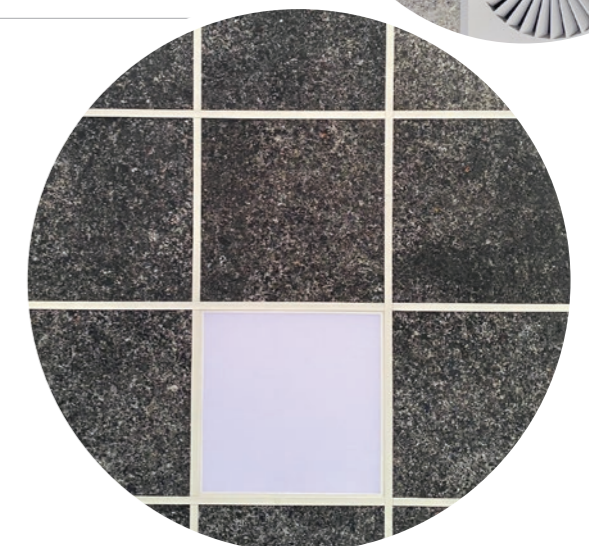


Ceiling tiles

Description: A pre-finished, durable, impact resistant interior ceiling tile, cut into standard grid size to be used as a ceiling tile. The Exposed boards have a recycled LDPE face and a recycled paper back. It can be used as an alternative to plasterboard or polyester ceiling tiles. These ceiling tiles can also be custom-made using client-supplied waste to create a unique, on-brand tile.

Reference Guide:

Colours	White Noise, Black
Sheet Size	10mm x 595 x 595 1195
Pallet	70 or 140
Pack	4 or 8
Acoustic	STC 30db CAC 47
Fire Group Number AS3837	3
Density	750kg/m3
Bracing	@1200mm BU/m W102 EQ125
Waste Diversion	2.6kg per 595mm ceiling tile 5.2kg per 1195mm ceiling tile
Carbon	-7.36kgCO2/m2 including biogenic
Certifications / Ecolabels	Codemark CMNZ70148 EcoChoice Certified & GECA Ecolabels Declare
Limitations	Not suitable for use in wet areas



Paperfaced

Description: A durable, impact-resistant interior wall and ceiling lining that can be plastered and painted, or used as a substrate. It is fixed to a timber frame. Paperfaced has a recycled paper face and back and is available with either a square or tapered edge. It can be used as an alternative to plasterboard or plywood and offers high-impact protection, durability, and high-performance bracing.

Reference Guide:

Sheet Size	10mm x 1200 x 2400 2700 3000 (min order x70)
Custom	NZ: Custom cut to length 2400-6000mm (min order x70) AU: Custom cut to length of max 3000mm or up to 4 pallets at 6,000
Pallet	35
Acoustic	STC 30dB
Fire Group Number AS3837	3
Bracing	@1200mm BU/m W125 EQ130
Density	750kg/m3
Waste Diversion	21kg per 2400mm board 24kg per 2700mm board
Carbon	-4.31kgCO2/m2 including biogenic
Certifications	Codemark CMNZ70148 EcoChoice & GECA Ecolabels Declare
Limitations	Not for use in wet areas To achieve a flat finish a Level 5 plaster finish is required



betterJOINERY

Description: A high-density board for cabinetry, counter tops and furniture. A durable, high-impact resistant product that can be CNC machined. betterJOINERY has a recycled LDPE front and back and can be used as an alternative for MDF or plywood.

Reference Guide:

Thickness	Exposed Surface: 12mm 15mm Laminate: 12mm 18mm 24mm or 36mm (custom)
Length	Exposed Surface: 1200mm x 2400 2700 Laminate: 1220mm x 2440 3000 3600
Pallet	30
Colours	White Noise, Black
Density	950kg/m3
Waste Diversion	32kg per 2400mm board 36kg per 2700mm board
Limitations	Not for use in wet areas. Suitable in splash zones. Not for use as benchtop.



Multi Use



Description: A high-density, impact resistant multi use panel offering high performance bracing for use as an industrial wall lining, interior or exterior hoarding and formwork. Multi Use has a recycled LDPE face and recycled paper back. Use as an alternative for treated or untreated plywood.

Reference Guide:

Sheet Size	12mm x 1200 x 2400 2700
Pallet	30
Colours	Natural, White Noise, Black (min order x 70)
Density	900kg/m ³
Waste Diversion	31kg per 2400mm board 34kg per 2700mm board
Carbon	-10.0kgCO ₂ /m ² including biogenic
Exposure	Up to 2 years unpainted Up to 3 years painted
Limitations	Not for permanent outdoor use. Suitable for splash zones or wash down areas. As an industrial wall lining use in open, well ventilated spaces i.e. warehousing / sheds Formwork up to 1000mm high



betterBRACE rigid air barrier + 4Steel

Description: A rigid air barrier. Fibreglass face and recycled paper back. Use an alternative to a plywood or cement based rigid air barrier, install using a flexible wall wrap or industry standard tapes.

Reference Guide:

Sheet Size	NZ: 10mm x 1200 x 2450 2750 3050 7mm x 1200 x 2450 2750 3050 17mm x 1200 x 2450 2750 3050 (4Steel) AU: 7mm x 1200 x 2440 2745 3050
Custom	Custom cut to length 2400-6000mm
Pallet	35 (10mm) 50 (7mm) 30 (17mm 4Steel)
Density	850kg/m3
Fire Group Number AS3837	3
Waste Diversion	25kg per 10mm 2450mm board 18kg per 7mm 2400mm board
Carbon	-5.51kgCO2/m2 including biogenic
Exposure	30 Days + wrap
Limitations	Up to 10 metres



roofBOARD

Description: A roofing substrate. Fibreglass face and recycled paper back. Use as a substrate on a metal tray or continuous surface.

Reference Guide:

Sheet Size	12mm x 2400 and 2700 and 3000 10mm x 1200 x 2750 3000 (min order x70)
Custom	Custom cut to length 2400-6000mm (min order x70)
Pallet	35
Density	850kg/m ³
Fire Group Number AS3837	3
Waste Diversion	29kg per 2400mm board 33kg per 2700mm board
Carbon	-7.35kgCO ₂ /m ² including biogenic



formWORK

Description: Finished with an external moisture resistant facing layer on both sides. Does not need a concrete release agent. Suitable for residential foundations to civil engineering structures.

Reference Guide:

Sheet Size	15mm x 1200 x 300 600 2400 - custom
Custom	Custom cut into strips (300mm or 400mm wide) up to 480mm
Pallet	30
Density	950kg/m ³
Fire Group Number AS3837	3
Waste Diversion	41kg per 2400mm board
Carbon	-10.1kgCO ₂ /m ² including biogenic



Renasci™

Description: A pre-finished resilient flooring plank made from 80% reclaimed carpet and 20% consumer soft plastics. Enhanced scratch and wear resistance for long-lasting performance. Easy, glue-free installation using mechanical fixing methods.

Reference Guide:

Tile Size	500mm x 1000
Overall Thickness (Nominal)	6.5mm (±0.3mm)
Wear Layer Thickness	0.50mm
Finish	Integrated Polyurethane
Weight per Box	26.5kg
Critical Radiant Flux (AS ISO 9239-1)	2.9 kW/m ²
Smoke Rate (AS ISO 9239-1)	597%.min
Slip Resistance Classification	P3 & R10
Total VOC Emissions (ISO 10580)	≤ 0.30 (mg/m ² /h)



saveBOARD products are made from 99% recycled waste and as such are not perfect.

The dimensional tolerance is + / - 1mm and the weight + / - 10%/sheet. The surface may have veins or press marks, and there may be a colour variance between batches. Air bubbles may be evident on the recycled paper back or face of Paperfaced.

Multi Use will fade over time when used as an exterior hoarding. UV may deteriorate the surface but the board remains structurally sound.

betterBRACE rigid air barrier has a mottled surface. This can look like moisture damage! It is the colour from the packaging waste bleeding into the fibreglass face during manufacture. It does not affect the board in any way.

Instructions on how to work with these characteristics of saveBOARD can be found on the website:

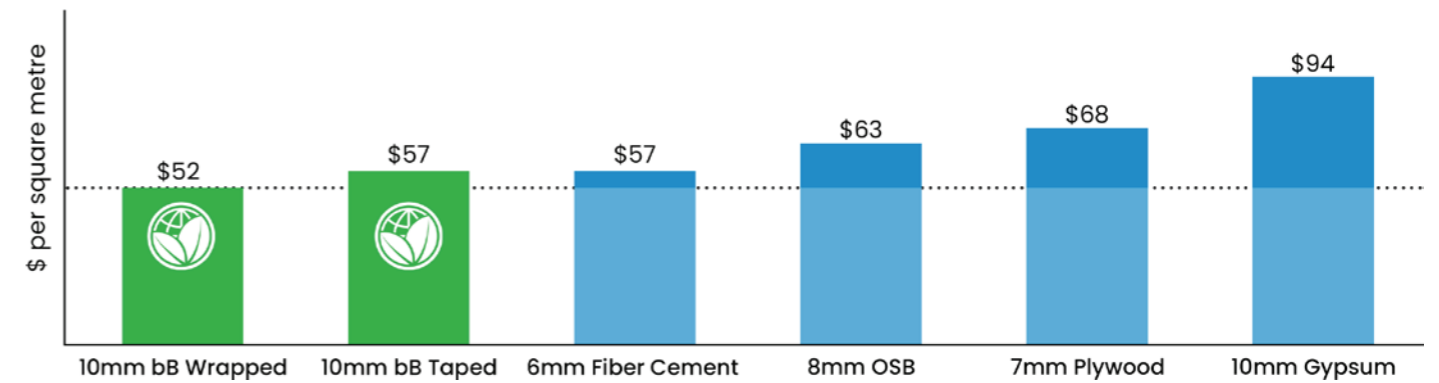
www.saveboard.nz/notperfect and www.saveboard.com.au/notperfect



betterBrace rigid air barrier

Total installed Cost - Product Comparison

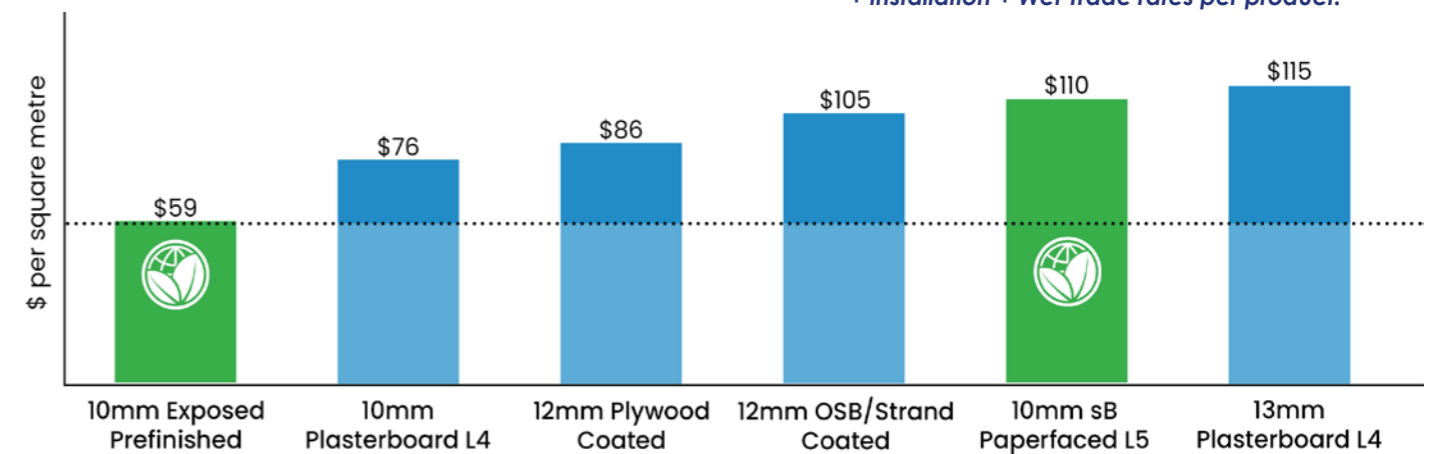
Comparison based on Trade Pricing of sheets + tapes and installation rates per product.



Internal Linings

Total installed Cost - Product Comparison

Comparison based on Trade Pricing of sheets + installation + Wet Trade rates per product.





www.saveboard.nz
www.saveboard.com.au