



PRODUCT CATALOGUE

PROUDLY AUSTRALIAN MADE

# LADaMAX<sup>®</sup>

AUSTRALIA'S LADDER SPECIALIST



**LADaMAX<sup>®</sup>**



**SWAGELOCK**  
**ULTIMATE FAILSAFE**

**SUPERIOR METHOD OF TREAD RUNG CONNECTION**  
**INCREASE TORTIONAL STIFFNESS**  
**REDUCES TWIST**  
**INCREASES LIFE SPAN**  
**& QUITE SIMPLY SAVES LIVES**

**LADaMAX<sup>®</sup> IS PROUDLY AUSTRALIAN MADE AND OWNED**





## STEPLADDERS

- Failsafe step can never shear (NORMAL USE)
- Double hollow step tread, processed and swaged through siderails
- Up to 50% increase in torsional rigidity over riveted step ladder frames
- No rivets to shear OR rust
- Reduces frame twist
- No holes to elongate



## SINGLE SCAFFOLD & EXTENSION LADDERS

- Strongest 'D' shape rung FLAT TOP FOR SAFETY
- Internal crimp wall and external swage is the strongest and safest connection of all
- Increased torsional rigidity
- Less twist
- Failsafe

LADaMAX's focus has been - and always will be - to establish a reputation as Australia's leading safety brand, manufacturing only premium quality industrial product proudly manufactured in Australia.

*In the industry for 18 years, LADaMAX can proudly state ZERO claims on all ladder frames produced.*

This is a world class safety record, possibly second to none in the world today.

Australian owned, Australian made and using only Australian materials, LADaMAX will ensure that we offer a safer choice for all Australian and international users. The LADaMAX team are 100% committed to ensure that LADaMAX is the most responsive and caring ladder company in the industry.

GLEN BAILEY  
DIRECTOR



**LADaMAX<sup>®</sup> EXCLUSIVELY USES SWAGELOCK IN ALL PRODUCTS**

# PLATFORM

ULTIMATE FAILSAFE



TESTED TO  
500kg

# LADaMAX<sup>®</sup>

## SUPERIOR PLATFORM

DESIGN ENSURES MAXIMUM SAFETY

FIRST LINE OF SAFETY

### PLATFORM

Aluminium extruded platform (NOT PLASTIC) to ensure it lasts in harsh Australian UV climate. Extra rib support to add extra strength and support. Connected with 8mm solid fasteners to side rail.



SECOND LINE OF SAFETY

### TREAD + SWAGELOCK

Fully supporting the platform is our Swagelock step tread which ensures failsafe protection and support. In the event of huge overload LADaMAX step tread may bend but not collapse. Double hollow extrusion to maximise strength, on every LADaMAX platform. Increases torsional rigidity and reduces twist (no rivets to shear).



THIRD LINE OF SAFETY

### PLATFORM DOUBLE BRACING

Front and rear double bracing under every LADaMAX platform. These connect step tread to side rail to ensure a third line of support and reduce twist and sideways movement.



**ONLY LADaMAX OFFERS THESE  
EXTRA FAILSAFE DESIGNS FOR  
YOUR PROTECTION AND SAFETY**

**18 YEARS AND ZERO CLAIMS ON ALL LADaMAX<sup>®</sup> PRODUCTS**

# FIBREGLASS PLATFORM STEP LADDERS

150KG RATED | AS 1892



**NON-CONDUCTIVE**  
SAFE FOR ELECTRICAL WORK

## FIBREGLASS PREMIUM RANGE

- UV RESISTANT FIBREGLASS - lasts longer and better value
- Safest failsafe platform (500kg Load test)
- Double gusset braces and Strongbow full base brace systems
- Stronger RHS rear frame
- Swagelock step connection 50% stronger
- Strongest plated foot connection
- Lightweight

### OPTIONS

- SAFETY GATE
- PLATFORM KICKBOARD
- CASTOR KIT



**POWER-MAX**  
ULTIMATE ELECTRICAL FAILSAFE



**NON-CONDUCTIVE**  
SAFE FOR ELECTRICAL WORK

## FIBREGLASS STANDARD RANGE

- UV RESISTANT FIBREGLASS - lasts longer and better value
- Safest failsafe platform (500kg Load test)
- Stronger full gusset base brace - "GUSSET GUTZ"
- Channel section rear frame
- Swagelock step connection 50% stronger
- Strongest plated foot connection
- Lightweight

### OPTIONS

- SAFETY GATE
- PLATFORM KICKBOARD
- CASTOR KIT



**POWER-MAX**  
ULTIMATE ELECTRICAL FAILSAFE



| CODE     | PLATFORM HEIGHT (m) | WIDTH (mm) | WEIGHT (kg) | BASE BRACE | TRANSPORT CUBE (m <sup>3</sup> ) |
|----------|---------------------|------------|-------------|------------|----------------------------------|
| FPS5-2   | .61                 | 580        | 11          | Gusset     | .33                              |
| FPS6-3   | .88                 | 620        | 12          | Gusset     | .39                              |
| FPS7-4   | 1.17                | 660        | 13          | Gusset     | .45                              |
| FPS8-5   | 1.45                | 700        | 14          | Gusset     | .51                              |
| FPS9-6   | 1.74                | 740        | 15          | Gusset     | .57                              |
| FPS10-7  | 2.02                | 780        | 16          | Strongbow  | .63                              |
| FPS11-8  | 2.30                | 820        | 17          | Strongbow  | .69                              |
| FPS13-10 | 2.89                | 1050       | 26          | Strongbow  | 1.22                             |

| CODE    | PLATFORM HEIGHT (m) | WIDTH (mm) | WEIGHT (kg) | TRANSPORT CUBE (m <sup>3</sup> ) |
|---------|---------------------|------------|-------------|----------------------------------|
| FPS5-2G | .61                 | 580        | 11          | .21                              |
| FPS6-3G | .88                 | 620        | 12          | .26                              |
| FPS7-4G | 1.17                | 660        | 13          | .32                              |
| FPS8-5G | 1.45                | 700        | 14          | .39                              |
| FPS9-6G | 1.74                | 740        | 15          | .46                              |

All measurements are nominal and do not indicate 'exact weights and measures'



# ALUMINIUM PLATFORM STEP LADDERS

150KG RATED | AS 1892

## ALUMINIUM PREMIUM RANGE

- Safest failsafe platform (500kg load test)
- Double gusset braces and Strongbow full base brace systems
- Stronger RHS rear frame
- Swagelock step connection 50% stronger
- Strongest plated foot connection

### OPTIONS



SAFETY GATE



PLATFORM KICKBOARD



CASTOR KIT



| CODE    | PLATFORM HEIGHT (m) | WIDTH (mm) | WEIGHT (kg) | BASE BRACE | TRANSPORT CUBE (m <sup>3</sup> ) |
|---------|---------------------|------------|-------------|------------|----------------------------------|
| PS5-2   | .61                 | 580        | 9           | Gusset     | .33                              |
| PS6-3   | .88                 | 620        | 10          | Gusset     | .39                              |
| PS7-4   | 1.17                | 660        | 11          | Gusset     | .45                              |
| PS8-5   | 1.45                | 700        | 12          | Gusset     | .51                              |
| PS9-6   | 1.74                | 740        | 13          | Gusset     | .57                              |
| PS10-7  | 2.02                | 780        | 14          | Strongbow  | .63                              |
| PS11-8  | 2.30                | 820        | 15          | Strongbow  | .69                              |
| PS13-10 | 2.89                | 860        | 24          | Strongbow  | 1.22                             |
| PS15-12 | 3.45                | 1050       | 26          | Strongbow  | 1.4                              |

All measurements are nominal and do not indicate 'exact weights and measures'

## ALUMINIUM STANDARD RANGE

- Safest failsafe platform (500kg Load test)
- Stronger full gusset base brace - "GUSSET GUTZ"
- Channel section rear frame
- Swagelock step connection 50% stronger
- Strongest plated foot connection

### OPTIONS



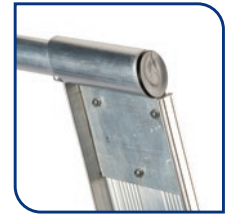
SAFETY GATE



PLATFORM KICKBOARD



CASTOR KIT



| CODE   | PLATFORM HEIGHT (m) | WIDTH (mm) | WEIGHT (kg) | TRANSPORT CUBE (m <sup>3</sup> ) |
|--------|---------------------|------------|-------------|----------------------------------|
| PS5-2G | .61                 | 580        | 9           | .33                              |
| PS6-3G | .88                 | 620        | 10          | .39                              |
| PS7-4G | 1.17                | 660        | 11          | .45                              |
| PS8-5G | 1.45                | 700        | 12          | .51                              |
| PS9-6G | 1.74                | 740        | 13          | .57                              |



# MOBILE ORDER PICKER WAREHOUSE RANGE

150KG RATED | AS 1892



## ALUMINIUM

- Safest failsafe platform (500kg Load test)
- World's safest aluminium platform
- Complete mobility castors
- Safety integrated hand rail
- Double gusset braces up to and including 6'ft platform height



### OPTIONS



SAFETY GATE



PLATFORM KICKBOARD

| CODE   | PLATFORM HEIGHT (m) | WIDTH (mm) | WEIGHT (kg) | TRANSPORT CUBE (m <sup>3</sup> ) |
|--------|---------------------|------------|-------------|----------------------------------|
| SM5-2  | .61                 | 580        | 12.5        | .33                              |
| SM6-3  | .88                 | 620        | 14          | .39                              |
| SM7-4  | 1.17                | 660        | 15          | .45                              |
| SM8-5  | 1.45                | 700        | 16          | .51                              |
| SM9-6  | 1.74                | 740        | 17          | .57                              |
| SM10-7 | 2.02                | 780        | 19          | .63                              |
| SM11-8 | 2.30                | 820        | 20          | .69                              |

**NON-CONDUCTIVE**  
SAFE FOR ELECTRICAL WORK

## FIBREGLASS

- UV RESISTANT FIBREGLASS - lasts longer and better value
- Safest failsafe platform (500kg Load test)
- World's safest aluminium platform
- Complete mobility castors
- Safety integrated hand rail
- Double gusset braces up to and including 6'ft platform height



### OPTIONS



SAFETY GATE



PLATFORM KICKBOARD

| CODE    | PLATFORM HEIGHT (m) | WIDTH (mm) | WEIGHT (kg) | TRANSPORT CUBE (m <sup>3</sup> ) |
|---------|---------------------|------------|-------------|----------------------------------|
| FSM5-2  | .61                 | 580        | 11          | .33                              |
| FSM6-3  | .88                 | 620        | 12          | .39                              |
| FSM7-4  | 1.17                | 660        | 13          | .45                              |
| FSM8-5  | 1.45                | 700        | 14          | .51                              |
| FSM9-6  | 1.74                | 740        | 15          | .57                              |
| FSM10-7 | 2.02                | 780        | 16          | .63                              |
| FSM11-8 | 2.30                | 820        | 17          | .69                              |

All measurements are nominal and do not indicate 'exact weights and measures'

# STEP LADDERS SINGLE SIDED

150KG RATED | AS 1892

## ALUMINIUM

- Swagelock step connection **50% stronger**
- **Stronger** full gusset base brace - "GUSSET GUTZ"
- Side arm locks
- **Strongest** foot connection
- **Lightweight**



**NON-CONDUCTIVE**  
SAFE FOR ELECTRICAL WORK

## FIBREGLASS

- **UV RESISTANT FIBREGLASS** - lasts longer and better value
- Swagelock step connection **50% stronger**
- **Stronger** full gusset base brace - "GUSSET GUTZ"
- Side arm locks
- **Strongest** plated foot connection
- **Lightweight**



| CODE  | LENGTH (m) | WIDTH (mm) | WEIGHT (kg) | TRANSPORT CUBE (m <sup>3</sup> ) |
|-------|------------|------------|-------------|----------------------------------|
| SS042 | 1.20       | 470        | 5           | 0.07                             |
| SS062 | 1.80       | 545        | 7           | 0.12                             |
| SS082 | 2.40       | 620        | 9           | 0.19                             |
| SS102 | 3.00       | 695        | 14          | 0.26                             |
| SS122 | 3.60       | 770        | 16          | 0.35                             |

| CODE   | LENGTH (m) | WIDTH (mm) | WEIGHT (kg) | TRANSPORT CUBE (m <sup>3</sup> ) |
|--------|------------|------------|-------------|----------------------------------|
| FSS042 | 1.20       | 470        | 5           | 0.17                             |
| FSS062 | 1.80       | 545        | 11          | 0.21                             |
| FSS082 | 2.40       | 620        | 15          | 0.26                             |
| FSS102 | 3.00       | 695        | 19          | 0.36                             |
| FSS122 | 3.60       | 770        | 23          | 0.49                             |

All measurements are nominal and do not indicate 'exact weights and measures'



# STEP LADDERS DOUBLE SIDED

150KG RATED | AS 1892



## ALUMINIUM

- **Swagelock** step connection 50% stronger
- **Stronger** full gusset base brace - "GUSSET GUTZ"
- Side arm locks
- **Strongest** foot connection
- **Lightweight**



| CODE    | LENGTH (m) | WIDTH (mm) | WEIGHT (kg) | TRANSPORT CUBE (m <sup>3</sup> ) |
|---------|------------|------------|-------------|----------------------------------|
| DS032   | .90        | 435        | 7           | 0.07                             |
| DS042   | 1.20       | 470        | 8           | 0.1                              |
| DS062   | 1.80       | 545        | 10          | 0.17                             |
| DS082   | 2.40       | 620        | 13          | 0.26                             |
| DS102HA | 3.00       | 695        | 20          | .36                              |
| DS122HA | 3.60       | 770        | 22          | 0.49                             |
| DS142HA | 4.20       | 845        | 32          | 0.62                             |
| DS162HA | 4.80       | 920        | 40          | 0.77                             |

**NON-CONDUCTIVE**  
SAFE FOR ELECTRICAL WORK

## FIBREGLASS

- **UV RESISTANT FIBREGLASS** - lasts longer and better value
- **Swagelock** step connection 50% stronger
- **Stronger** full gusset base brace - "GUSSET GUTZ"
- Side arm locks
- **Strongest** plated foot connection
- **Lightweight**



| CODE   | LENGTH (m) | WIDTH (mm) | WEIGHT (kg) | TRANSPORT CUBE (m <sup>3</sup> ) |
|--------|------------|------------|-------------|----------------------------------|
| FDS032 | .90        | 435        | 6           | 0.07                             |
| FDS042 | 1.20       | 470        | 8           | 0.1                              |
| FDS062 | 1.80       | 545        | 12          | 0.17                             |
| FDS082 | 2.40       | 620        | 16          | 0.26                             |
| FDS102 | 3.00       | 695        | 22          | 0.36                             |
| FDS122 | 3.60       | 770        | 26          | 0.49                             |

All measurements are nominal and do not indicate 'exact weights and measures'



# EXTENSION LADDERS

150KG RATED | AS 1892

## ALUMINIUM EXTENSION LADDERS

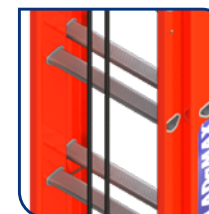
- Interlocking side rails for **safety** and **stability**
- **Strongest** flat top 'D' rung
- Easy flow rope system
- Large flat feet
- Swagelock 'D' rung connection **stronger**
- Braided rope
- **Lightweight**



**NON-CONDUCTIVE**  
SAFE FOR ELECTRICAL WORK

## FIBREGLASS EXTENSION LADDERS

- **Purpose designed** for electrical contractors
- **Rung replacement** system available
- **Easy slide** acetal blocks
- **Easy flow** braided rope system
- **UV inhibitors**
- Interlocking side rails for **safety, rigidity** and **stability**
- **Strongest** flat top 'D' rung
- **Large solid ladder boots** – for extra support
- Upper section is free of rope
- Pole chain as standard
- **Lightweight**



| CODE  | LENGTH (m) | WIDTH (mm) | WEIGHT (kg) | TRANSPORT CUBE (m <sup>3</sup> ) |
|-------|------------|------------|-------------|----------------------------------|
| XT082 | 2.4/3.9    | 420        | 14          | 0.14                             |
| XT102 | 3.0/5.1    | 420        | 17          | 0.18                             |
| XT122 | 3.6/6.3    | 420        | 20          | 0.22                             |
| XT132 | 3.9/6.9    | 420        | 22          | 0.23                             |
| XT142 | 4.2/7.5    | 420        | 23          | 0.25                             |
| XT162 | 4.8/8.4    | 420        | 27          | 0.29                             |
| XT182 | 5.4/9.6    | 420        | 31          | 0.32                             |
| XT202 | 6.0/10.8   | 420        | 33          | 0.36                             |

| CODE   | LENGTH (m) | WIDTH (mm) | WEIGHT (kg) | TRANSPORT CUBE (m <sup>3</sup> ) |
|--------|------------|------------|-------------|----------------------------------|
| FXT082 | 2.7/3.9    | 390/405    | 17          | 0.18                             |
| FXT102 | 3.3/5.1    | 390/405    | 20          | 0.22                             |
| FXT122 | 3.9/6.3    | 390/405    | 25          | 0.25                             |
| FXT142 | 4.5/7.5    | 390/405    | 28          | 0.29                             |
| FXT162 | 5.1/8.5    | 390/405    | 31          | 0.34                             |

All measurements are nominal and do not indicate 'exact weights and measures'

# DUAL PURPOSE STEP & STRAIGHT

150KG RATED | AS 1892



## ALUMINIUM

- Swagelock step connection **50% stronger**
- **Stronger** full gusset base brace - "GUSSET GUTZ"
- More **stable** tapered rear frame
- Stainless steel connectors
- **Strongest** foot connection
- **Lightweight**



## NON-CONDUCTIVE SAFE FOR ELECTRICAL WORK

## FIBREGLASS

- **UV RESISTANT FIBREGLASS** - lasts longer and better value
- Swagelock step connection **50% stronger**
- **Stronger** full gusset base brace - "GUSSET GUTZ"
- More **stable** tapered rear frame
- Stainless steel connectors
- **Strongest** plated foot connection
- **Lightweight**



| CODE  | LENGTH (m) | WIDTH (mm) | WEIGHT (kg) | TRANSPORT CUBE (m <sup>3</sup> ) |
|-------|------------|------------|-------------|----------------------------------|
| SE062 | 1.8/3.0    | 545        | 9           | 0.17                             |
| SE072 | 2.1/3.6    | 585        | 10          | 0.21                             |
| SE082 | 2.4/4.2    | 625        | 11          | 0.26                             |

| CODE   | LENGTH (m) | WIDTH (mm) | WEIGHT (kg) | TRANSPORT CUBE (m <sup>3</sup> ) |
|--------|------------|------------|-------------|----------------------------------|
| FSE062 | 1.8/3.0    | 545        | 10          | 0.17                             |
| FSE072 | 2.1/3.6    | 585        | 12          | 0.21                             |
| FSE082 | 2.4/4.2    | 625        | 14          | 0.26                             |

All measurements are nominal and do not indicate 'exact weights and measures'





# SCAFFOLD LADDERS

150KG RATED | AS 1892

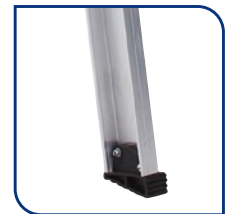
## FIBREGLASS

- **UV RESISTANT FIBREGLASS** - lasts longer and better value
- **Lightweight**, channel section, side rail, large flat top 'D' aluminium rung
- **Strength**, Swagelock 'D' Aluminium rung connection **stronger**
- Rung braces to increase **stability** and **rigidity**
- **Solid foundation**, large solid base boots - plated for extra support



## ALUMINIUM SCAFFOLD LADDERS

- Channel section 2.4m-4.2m
- **Stronger** I-Beam section 4.8m-6.0m
- Possibly the **lightest** and **strongest** single scaffold ladder made
- Large flat feet
- Swagelock 'D' rung connection **stronger**
- **Lightweight**



| CODE   | LENGTH (m) | WIDTH (mm) | WEIGHT (kg) | TRANSPORT CUBE (m³) |
|--------|------------|------------|-------------|---------------------|
| FSI082 | 2.4        | 365        | 8           | 0.08                |
| FSI102 | 3.0        | 365        | 9           | 0.09                |
| FSI122 | 3.6        | 365        | 10          | 0.11                |
| FSI142 | 4.2        | 365        | 12          | 0.13                |
| FSI162 | 4.8        | 365        | 14          | 0.15                |
| FSI182 | 5.4        | 365        | 16          | 0.17                |
| FSI202 | 6.0        | 365        | 18          | 0.19                |

| CODE  | LENGTH (m) | WIDTH (mm) | WEIGHT (kg) | TRANSPORT CUBE (m³) |
|-------|------------|------------|-------------|---------------------|
| SI082 | 2.4        | 360        | 8           | 0.07                |
| SI102 | 3.0        | 360        | 9           | 0.09                |
| SI122 | 3.6        | 360        | 10          | 0.10                |
| SI142 | 4.2        | 360        | 12          | 0.12                |
| SI162 | 4.8        | 360        | 14          | 0.14                |
| SI182 | 5.4        | 360        | 16          | 0.16                |
| SI202 | 6.0        | 360        | 18          | 0.17                |

All measurements are nominal and do not indicate 'exact weights and measures'

# SCAFFOLD LADDERS

120KG RATED | AS 1892

## ERECTOR- SCAFFOLD LADDERS

- Special designed hooks - **strong and secure** connection to scaffold transom
- Welded secure **heavy duty** side plates
- Folding platform
- **Lightweight**



| CODE | LENGTH (m) | WIDTH (mm) | WEIGHT (kg) |
|------|------------|------------|-------------|
| ESI  | 1.965      | 405        | 7.23        |

All measurements are nominal and do not indicate 'exact weights and measures'





SWAGELOCK  
ULTIMATE FALLSAFE



PLATFORM  
ULTIMATE FALLSAFE



NON-CONDUCTIVE  
ELECTRICAL FALLSAFE



UVBLOCK  
ULTIMATE FALLSAFE



POWERMAX  
ELECTRICAL FALLSAFE



ZEROCLAIMS  
IN 18 YEARS



AUSTRALIAN MADE  
AND OWNED



PROUDLY AUSTRALIAN MADE

# LADaMAX®

AUSTRALIA'S LADDER SPECIALIST

[www.ladamax.com.au](http://www.ladamax.com.au)   
[admin@ladamax.com.au](mailto:admin@ladamax.com.au)   
07 3205 7698 