

Rubbedin
Magic

WASHING MACHINE DEEP CLEANER



Our NEW Magic Washing Machine Deep Cleaner and Disinfectant is in an easy-to-use liquid and is stronger than the others on the market. It effectively breaks down stubborn built-up grime, detergent, and mineral deposits from hidden areas like the outside of the bowl/drum and inside the pipes, which cause odours and dirty clothes from mould/grime particles and machine breakdowns from blockages.

Over time, dirt, soil, grease, bacteria, biological waste, organic matter, hair and body fats from clothing, detergent scum, lint, and calcium deposits build up behind the bowl and inside the washing machine pipes. These hidden deposits harbour bacteria, causing unpleasant odours, clothing discolouration, dirty marks on clothes, and blockages, leading to expensive washing machine repairs.

FEATURES:

- ① Removes Hidden Grime
- ② Removes Mineral Deposits
- ③ Removes 99.9% of Germs
- ④ Eliminates Bad Odours
- ⑤ Prolongs the Life of your Washing Machine

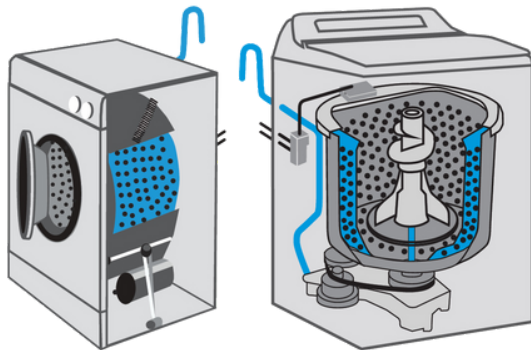


BENEFITS & POINT OF DIFFERENCE

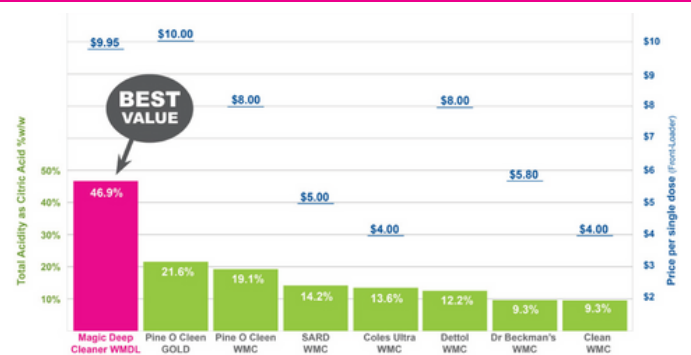
- ✓ Strongest Available
- ✓ Australian Made & Owned
- ✓ Suitable for Top & Front Loaders
- ✓ Non-Toxic & Biodegradable
- ✓ Septic & Grey Water Safe

HIDDEN LIMESCALE, MOULD & BACTERIA

Blue areas show where the build up occurs, behind the drum and in the pipes.



STRENGTH vs RRP



[Click here](#) to see how it works: The Story of 3 Washing Machines

FOR MORE INFORMATION CONTACT

1800 652 755

info@rubbedin.com.au

Rubbedin Pty Ltd
Unit 1, 43 Neumann Road, Capalaba, QLD 4157 Australia

W magiccleaningproducts.com.au

F @magiccleaningproducts



2024-09-WMDL-FS-01

