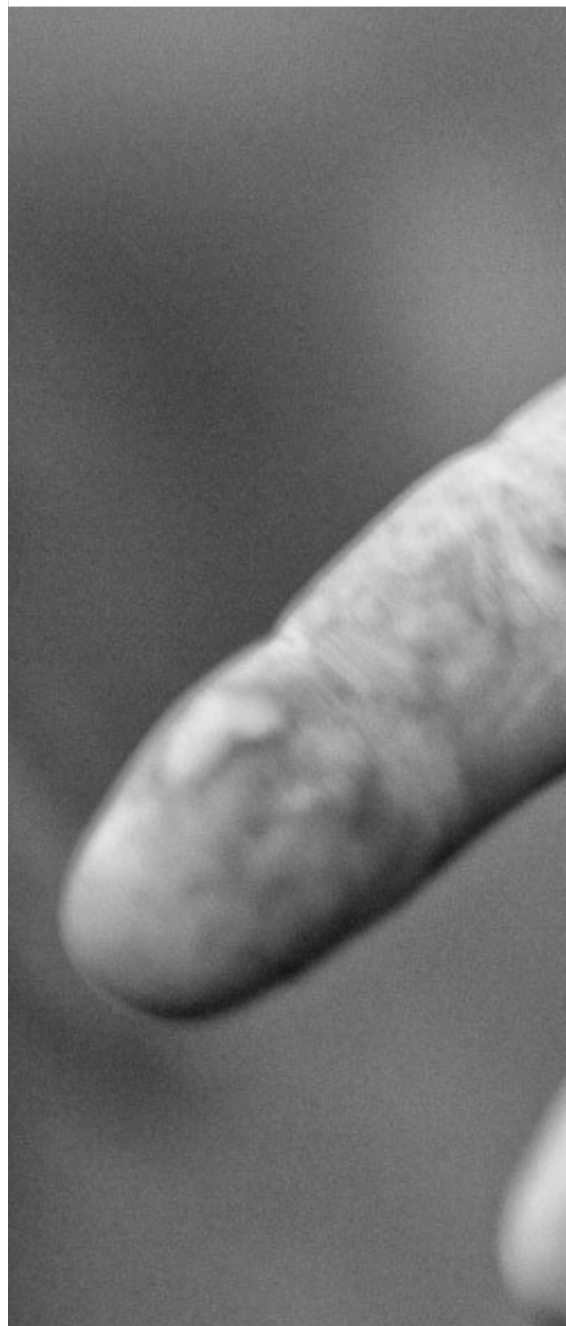




# PRODUCT INFORMATION





# OUR STORY

Vitec was established in 1989 by Ted Sloan. Ted was an agricultural scientist who had over a decade worth of practical experience having worked as a commercial orchardist for many years prior to establishing Vitec.

Throughout his time as an orchardist, Ted came to appreciate that there was far more to soil fertility, plant growth and animal health than simply applying large amounts of fertiliser.

Ted's philosophy for successful soil fertility along with plant and animal health was based around finding the optimal balance between the biological activity, the physical characteristics and the chemical balance in the soil.

After experiencing first hand the negative impact that soil imbalance and lack of essential nutrients had on his own orchard, Ted began to experiment with the use of fish and seaweed on his property as well as neighbouring farms. Ted quickly realised how effective seaweed and fish were at stimulating biological activity in both plants and soil and soon after created Vitec.

After extensive research and numerous trials, Ted soon found the optimal balance and created the Vitec method, which is still used to day. Vitec's unique method of processing fish and seaweed ensures that maximum levels of complex nutrients are retained resulting in improved crop and fruit yields, enhanced soil condition and improved overall animal health.

Vitec products have been adopted by many organic and conventional farmers to increase their yields of 1st grade produce and improve animal performance while increasing profits through reduced farming costs.





# **VITEC FERTILISERS**





# VITEC KING KELP FERTILISER

## Liquid Seaweed Fertiliser

NASAA Certified Organic

- Stimulates organic activity & assists with unlocking valuable nutrients from within the soil
- Stimulates deeper root growth
- Promotes natural resistance to disease & pests while improving drought and frost tolerance

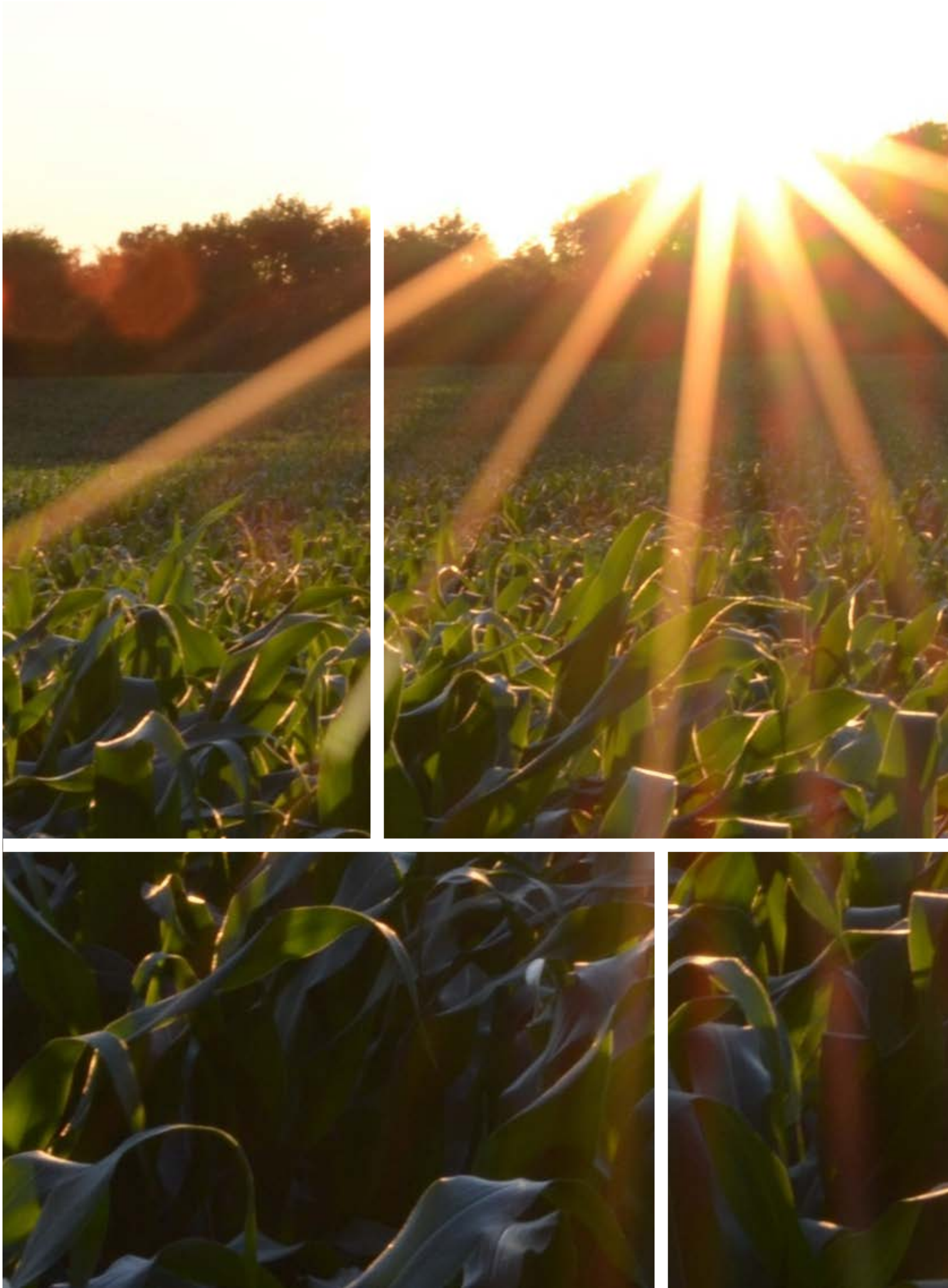
### ABOUT VITEC KING KELP FERTILISER

Vitec’s King Kelp fertiliser unlocks valuable nutrients from within the soil leading to healthy plant growth and improved pest and disease resistance. The cold processing of the kelp produces a product with unaltered natural nutrients, minerals, alginates, mature growth hormones, and other complex organic nutrients that are rapidly absorbed by actively growing plants. The immediate benefit obtained from kelp can be attributed to the release of auxins, cytokinins and gibberellins. These plant growth hormones, required in small quantities, are essential for cell division and cell elongation, basic functions of plant growth.

### HOW TO APPLY VITEC KING KELP FERTILISER

**FOLIAR APPLICATION:** Best applied as a fine mist for total coverage. For best results apply every 2-4 weeks during active growth until one week before harvest. Maximum responses are generally obtained with low but frequent application. Hand-line: 1Lt in 100Lt of water. Spray: 5-10Lt/Ha in 200Lt of water. This can be increased depending on state of soil and condition of crop.

**SOIL APPLICATION:** To stimulate soil organic activity and improve soil health, apply King Kelp Fertiliser at 10-20Lt/Ha early Spring and Autumn when soil is moist. Apply late afternoon or evening. Dilution rate can vary depending on soil quality and nutrient levels, Vitec encourages soil testing to determine the most beneficial application rate.



### CHEMICAL ANALYSIS

Nitrogen	0.03%
Phosphorus	0.01%
Potassium	0.85%
Sulphur	0.05%
Calcium	0.09%
Magnesium	0.05%
Sodium	0.28%
Iron	115ppm
Manganese	1.34ppm
Zinc	8.88ppm
Copper	1.09ppm
Cobalt	0.12ppm
Boron	18.7ppm
Molybdenum	0.18ppm
Selenium	0.63ppm
Organic Carbon	1.41%

**STORAGE**  
KEEP IN A COOL DARK PLACE



# VITEC FISH FERTILISER

## Liquid Fish Fertiliser

NASAA Certified Organic

- Contains a wide range of nutrients and trace elements in organic form
- Stimulates earthworm activity and plant growth
- Environmentally and safe way to revitalise your soil

### ABOUT VITEC FISH FERTILISER

Vitec’s Fish Fertiliser contains 95.5% pure liquid fish which has been cold processed to retain the natural balance of essential nutrients, amino acids, vitamins, trace elements and emulsified oils to feed and vitalise your soil. Fish hydrolysate utilises all the goodness in fish and therefore contains the whole spectrum of fish nutrients including all eleven recognised major minerals and trace elements required for sustained healthy plant growth. Fish based fertilisers improve soil condition, increases humus, promotes deep plant root formation and generally improves soil/crop quality and uniformity.

### HOW TO APPLY VITEC FISH FERTILISER

Vitec Fish Fertiliser is easy to handle and simple to apply using spray equipment or fertilisation methods.

**FOLIAR APPLICATION:** To maintain plant health we recommend light but frequent application. In Spring and Autumn heavy dosages can be beneficially for stimulating regrowth. Hand-line or Spray: 6-10Lt/Ha.

**SOIL APPLICATION:** To maximises organic activity apply Fish Fertiliser at 20-30Lt/Ha in early Spring and Autumn when soil is moist or 6-8 weeks before planting. Apply late afternoon or evening. Dilution rate can vary depending on soil quality and nutrient levels, Vitec encourages soil testing to determine the most beneficial application rate.



### CHEMICAL ANALYSIS

Nitrogen	2.7% - 3%
Phosphorous	0.50%
Potassium	0.50%
Calcium	0.73%
Magnesium	0.04%
Sulphur	0.16%
Iron	0.0056%
Manganese	0.028%
Copper	0.0061%
Zinc	0.0052%
Boron	0.0052%
Molybdenum	0.0011%
Cobalt	0.001%
Organic Carbon	13-16%
Fish Oils (protein & vitamin rich)	

**STORAGE**  
KEEP IN A COOL DARK PLACE



# VITEC COMBO FERTILISER

## Fish Concentrateplus Kelp

NASAA Certified Organic

- Contains the benefits of both fish and kelp based fertilisers
- Concentrated soil solution that boosts nutrients in depleted soils or stressed plants
- Improves root development and in turn stimulating soil microbes and nutrients

### ABOUT VITEC COMBO FERTILISER

Vitec’s Combo Fertiliser promotes strong and healthy growth within all crop and plant varieties. Vitec Combo is a super concentrated fish based fertiliser with additional kelp to improves the overall crop or garden performance. Vitec Combo produces gradual and cumulative benefits and is designed to be used as a foliar spray, to stimulate activity in plants and soil microbes.

### HOW TO APPLY VITEC COMBO FERTILISER

Best used as a regular foliar feed, applying every 2-4 weeks during active growth periods as well as post harvest.

**FOLIAR APPLICATION:** Best applied as a total coverage. Waxy leaf plants will benefit from the use of wetting agent. Spray early morning for best absorption. Avoid spraying during periods of high temperature. Hand-line: 1Lt in 100Lt of water. Spray: 5Lt/Ha in 200Lt of water. This can be increased depending on state of soil and condition of crop. High return and high density crop will benefit from regular light applications throughout the growing season e.g. For field crops 2L/Ha every 2-3 weeks.

**SOIL APPLICATION:** Vitec Combo can be applied directly onto the soil. Contact the Vitec team for more information.Vitec encourages soil testing to determine the most beneficial application rate.



### CHEMICAL ANALYSIS

Nitrogen	2.46%
Phosphorus	0.59%
Potassium	0.48%
Sulphur	0.25%
Calcium	0.52%
Magnesium	0.08%
Sodium	0.43%
Iron	109ppm
Manganese	1.4ppm
Zinc	15.9ppm
Copper	2.43ppm
Cobalt	0.127ppm
Boron	17.6ppm
Molybdenum	0.13ppm
Selenium	1.64ppm
Organic Carbon	15.5%

**STORAGE**  
**KEEP IN A COOL DARK PLACE**



# VITEC COMBO PLUS FERTILISER

Fish Concentrate, Kelp & Added Minerals

- Vitec Combo with added Boron, Copper, Magnesium, Iron, Zinc and much more
- Soil and plant vitaliser that boosts microbial activity
- Premium source of complex nutrients to produce strong healthy plant growth

## ABOUT VITEC COMBO PLUS FERTILISER

Vitec’s Combo Plus contains kelp, fish, plant extracts, trace elements, vitamins, amino acids and complex carbohydrates which work together to promote healthy strong growth in plants. Combo Plus is designed to top up the essential nutrients enabling plants to thrive and reach optimal potential/yields. Increased microbe activity greatly increases the existence of naturally beneficial micro organisms in the soil, therefore creating a healthier living environment for plants.

## HOW TO APPLY VITEC COMBO PLUS FERTILISER

Like Vitec Combo, Vitec Combo Plus is best used as a regular foliar feed, applying every 2-4 weeks during active growth periods as well as post harvest.

**FOLIAR APPLICATION:** Best applied as a total coverage. Waxy leaf plants will benefit from the use of wetting agent. Spray early morning for best absorption. Avoid spraying during periods of high temperature. Hand-line: 1Lt in 100Lt of water. Spray: 5Lt/Ha in 200Lt of water. This can be increased depending on state of soil and condition of crop. High return and high density crop will benefit from regular light applications throughout the growing season e.g. For field crops 2L/Ha every 2-3 weeks.

**SOIL APPLICATION:** Vitec Combo can be applied directly onto the soil. Contact the Vitec team for more information. Vitec encourages soil testing to determine the most beneficial application rate.



## CHEMICAL ANALYSIS

Nitrogen	2.24%
Phosphorus	0.31%
Potassium	0.45%
Sulphur	1.03%
Calcium	0.45%
Magnesium	0.21%
Sodium	0.39%
Iron	885ppm
Manganese	904ppm
Zinc	1280ppm
Copper	708ppm
Cobalt	11.4ppm
Boron	38.3ppm
Molybdenum	1.75ppm
Selenium	3.56ppm
Organic Carbon	13.0%

**STORAGE**  
**KEEP IN A COOL DARK PLACE**



# FERTILISER ACCESSORIES

## DIY SPRAY TANK CONVERSION KIT

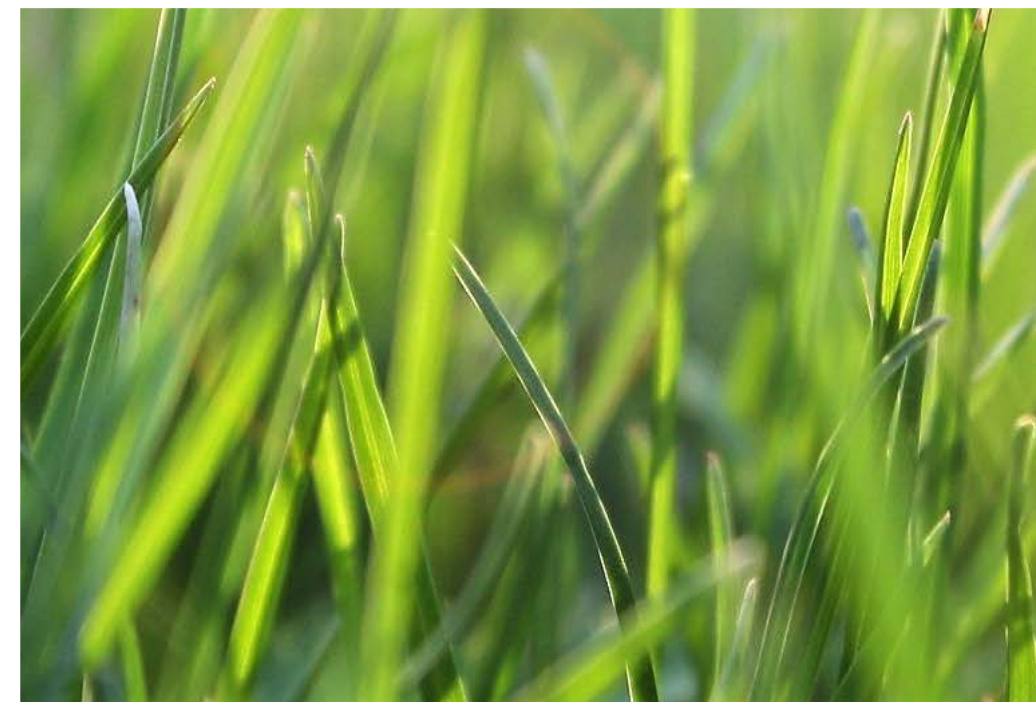
Will spray 5 hectares with minimal passes. Spray Vitec Fish & Kelp fertilisers with sprayable lime, dolomite or gypsum at the SAME time for a complete soil correction.

Comes with nozzle & venturi all pipes, tap (not complete). Illustrated instructions included. Also available is the TWIN Nozzle version as an extra.

**HAVE A SPRAY UNIT UP & RUNNING FOR LESS THAN \$300!**

## OTHER ACCESSORIES AVAILABLE AT VITEC

- Conversion Kit & Tank
- Brass Nozzle with Nut & Tail
- Venturi 2 MP( $\frac{3}{4}$ " BSP male)
- Venturi + Nozzle w/ N&T
- BRIX Meter 0-32% A.T.C
- Drum Spanner (200L)
- Drum Spanner (10L & 20L)
- Drum Pump (200L)
- Drum Tap (20L)
- SWEP Soil Test Kit
- Spray Trailer Hire







**VITEC STOCK  
SUPPLEMENTS**





# VITEC MIN-KEL

## Liquid Kelp Plus Vitamins & Minerals

NASSA Certified Organic

- **Made from 100% King Island Kelp**
- **Suitable for all ages & types of livestock & animals**
- **Premium natural seaweed based stock supplement with added mineral and vitamin to improve overall health**

### ABOUT VITEC MIN-KEL

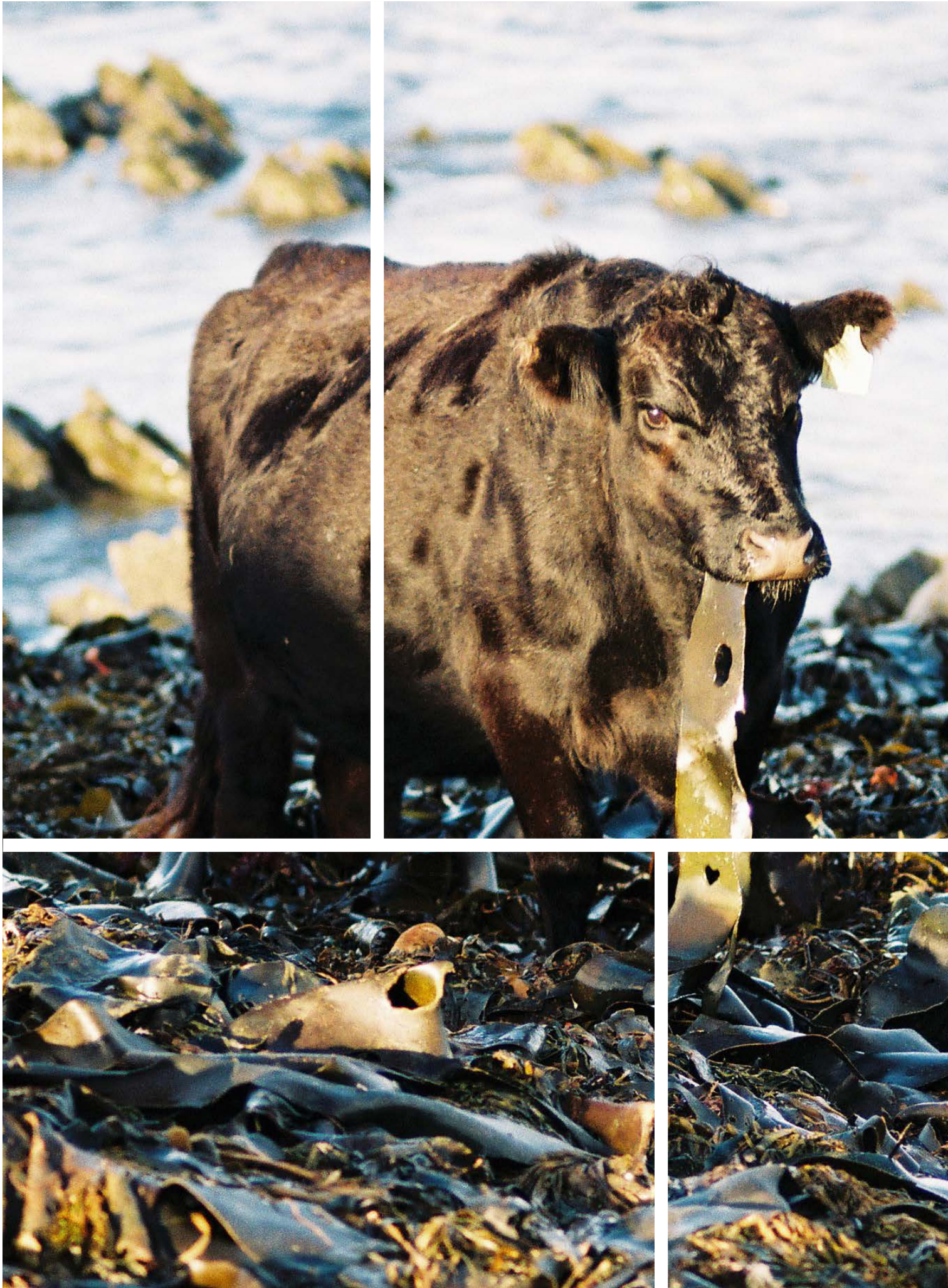
Vitec’s cold enzyme process ensures that all nutrients are preserved at their maximum level resulting in a highly concentrated and nutritious stock supplement. Vitec’s Min-Kel improves fertility and contraception rates while minimised the likelihood of birth complication or birth defects. Min-Kel also improves overall immune health, minimises illness, improves coat quality and assists with general weight gain. Generally, there are no hard and fast rules, small regular doses with good feeding levels provides the ideal condition in which the natural components in kelp can contribute to healthy stock and high performance.

### HOW TO ADMINISTER MIN-KEL

- Drenching:** Most effective method is drenching as it ensures 100% utilisation.
- Adding to Feed:** Spray over hay or other dry food. Some extra Molasses may need to be added initially to increase acceptance.
- Adding to the Water:** Dosing should be carried out early in the day to ensure as even uptake as possible. Note: Lick drums can also be used for cattle.
- Eezy Feeder:** Stock self administer by licking the coated balls in the feeder.

### STRESSFUL TIMES

When stressful conditions occur such as reduced feed, extreme climate conditions or sickness, Vitec’s Min-Kel can be extremely beneficial. A single dose, 5-10 times the general dose can be used. For breeding stock, a 5 times general dose is recommended one week before joining and one week before birth to improve fertility and reduce the likelihood of birth complications.



### GENERAL FORTNIGHTLY DOSAGE RATES

Calves	20ml
Dairy Cattle	40ml
Beef Cattle	20ml
Horses	25ml
Alpacas	10ml
Pigs	10ml
Sheep	5ml
Goats	5ml
Pets	1ml

**Note:** Stud and Show animals can benefit from a double dose approximately two weeks before sale or show.

### CHEMICAL ANALYSIS

Nitrogen	0.05%
Phosphorus	0.01%
Potassium	0.94%
Sulphur	0.37%
Calcium	0.09%
Magnesium	0.15%
Sodium	0.19%
Iron	114ppm
Manganese	4ppm
Zinc	952ppm
Copper	674ppm
Cobalt	0.01ppm
Boron	19.2ppm
Molybdenum	0.18ppm
Organic Carbon	1.73%

**STORAGE**  
**KEEP IN A COOL DARK PLACE**



# VITEC KELP STOCK CONCENTRATE

NASSA Certified Organic

- Cold processed to retain all vitamins, minerals & essential nutrients
- Rich source of micro-nutrients, alginic acid, essential amino acids and minerals
- No urea or medicinal substances

## ABOUT VITEC KELP CONCENTRATE FOR STOCK

Vitec’s Kelp Concentrate is produced using premium king island kelp, one of the richest sources of micro-nutrients, alginic acid, essential amino acids, minerals and other complex carbohydrates. Vitec’s Kelp Concentrate for Stock enables farmers to provide their animals with the beneficial nutrients found in kelp in a simple and easy to administer liquid solution. The liquifying process used to create Vitec’s Kelp Concentrate, improves overall absorption as essential vitamins and minerals are easily digested and metabolised. Vitec’s Kelp Concentrate promote healthy growth, improved vitality and appearance while minimised the likelihood of disease due to better immune health.

## HOW TO ADMINISTER VITEC KELP CONCENTRATE

**Drenching:** Most effective method is drenching as it ensures 100% utilisation.

**Adding to Feed:** Spay over hay or other dry food. Some extra Molasses may need to be added initially to increase acceptance.

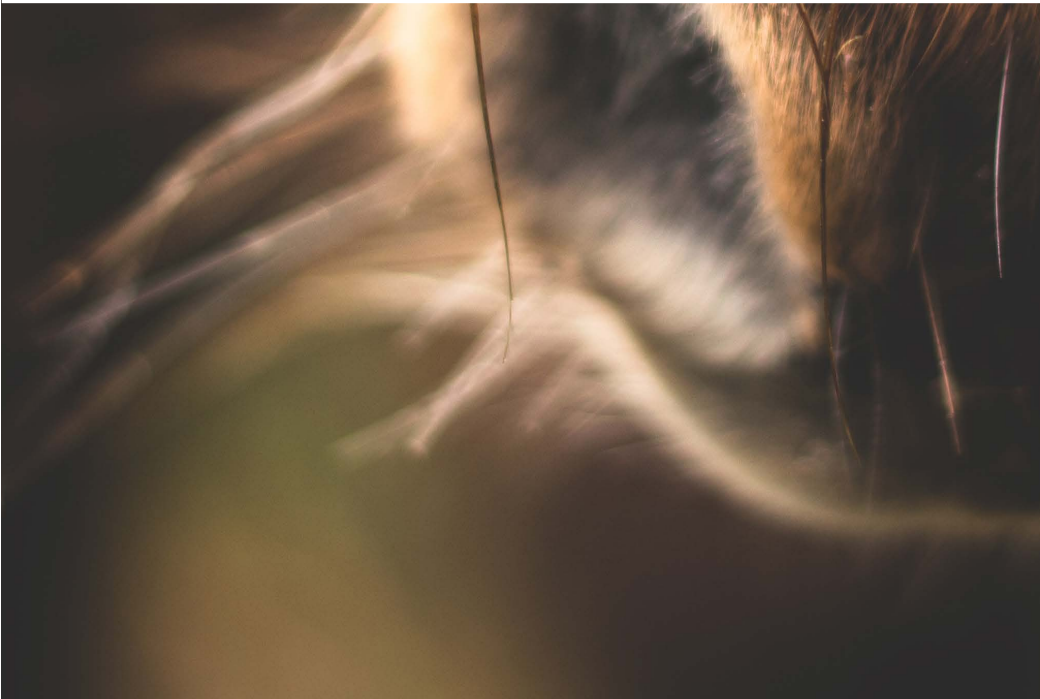
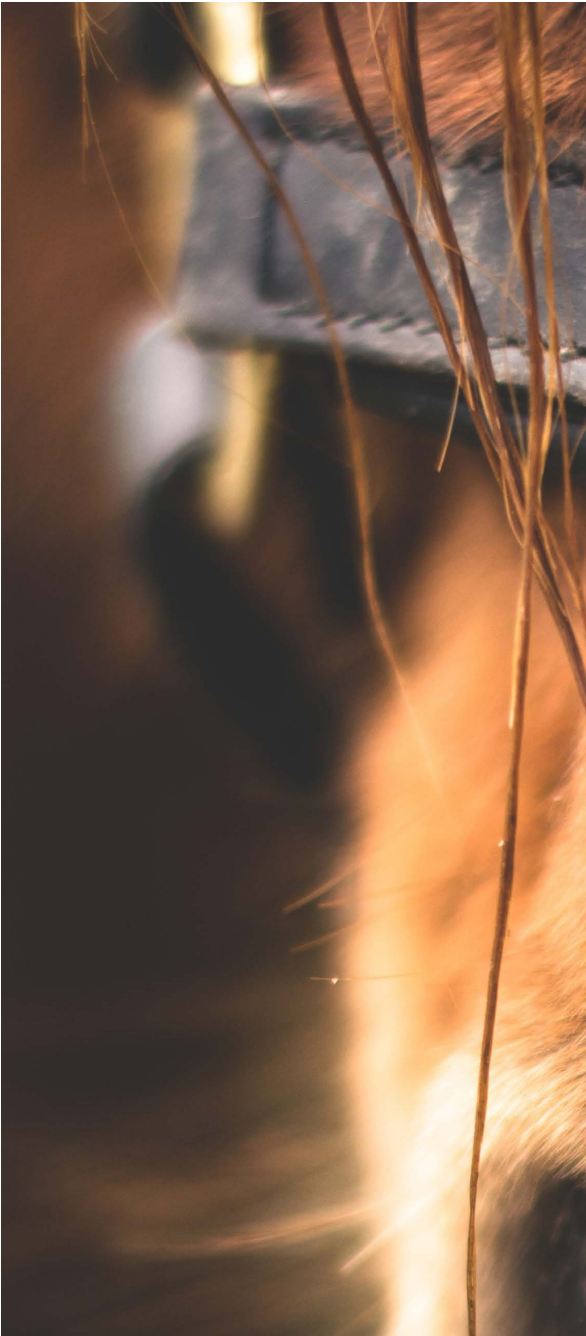
**Adding to the Water Supply:** Highly effective but uneven uptake is possible.

**Eezy Feeder:** Stock self administer by licking the coated balls in the feeder.

## STRESSFUL TIMES

During times of adverse weather, feed shortages, pre-calving, ect, the dose can be increased to 5 times the general fortnightly rate.

If extra Calcium/Magnesium is required, add 5L of Kelp Concentrate for Stock to 40Kg of Dolomite and make it available as a lick.



### GENERAL FORTNIGHTLY DOSAGE RATES

Calves	20ml
Dairy Cattle	40ml
Beef Cattle	20ml
Horses	25ml
Alpacas	10ml
Pigs	10ml
Sheep	5ml
Goats	5ml
Pets	2ml

**Note:** Stud and Show animals can benefit from a double dose approximately two weeks before sale or show.

### CHEMICAL ANALYSIS

Nitrogen	0.03%
Phosphorus	0.01%
Potassium	0.85%
Sulphur	0.05%
Calcium	0.09%
Magnesium	0.05%
Sodium	0.28%
Iron	115ppm
Manganese	1.34ppm
Zinc	8.88ppm
Copper	1.09ppm
Cobalt	0.12ppm
Boron	18.7ppm
Molybdenum	0.18ppm
Selenium	0.63ppm
Organic Carbon	1.41%

**STORAGE**  
**KEEP IN A COOL DARK PLACE**



# ORGANIC APPLE CIDER VINEGAR

Unpasturised ACV Plus Optional Garlic

NASSA Certified Organic

- Nature’s own antibiotic for livestock
- Reduces Mastitis, Cystitis, Ill Thrift and Catarrh
- A specially formulated double strength (8%) unpasteurised natural supplement for all livestock

## ABOUT VITEC APPLE CIDER VINEGAR

Organic Apple Cider Vinegar is ideal for integrating into animal health programs as it improves overall health and wellbeing. The acetic acid in apple cider vinegar fights off aggressive bacteria and micro-organisms while the malice acid improves digestion and stimulates animal appetite by managing pH levels. In addition, the apple cider vinegar targets infections by purifying the blood which allows the immune system to fight more effectively. Money is saved with regular use due to increased health and performance of the animals.

## HOW TO ADMINISTER VITEC APPLE CIDER VINEGAR

- Drenching:** Most effective method is drenching as it ensures 100% utilisation. However, frequent drenching can be impractical.
- Adding to Feed:** Sprinkle over hay or other dry food. Some extra Molasses may need to be added initially to increase acceptance.
- Adding to the Water Supply:** Highly effective but uneven uptake is possible.
- Eezy Feeder:** Stock self administer by licking the coated balls in the feeder.

## STRESSFUL TIMES

Increased amounts of Vitec Apple Cider Vinegar can be extremely beneficial during stressful periods such as adverse weather, feed shortages or pre-calving.



## GENERAL FORTNIGHTLY DOSAGE RATES

All doses to be diluted 50/50 with water. Except poultry - contact Vitec

Calves	20ml
Dairy Cows	40ml
Beef Cows	15ml
Horses	25 ml
Alpacas	10ml
Pigs	10ml
Goats	5ml
Sheep	5ml
Pets	1ml

## CHEMICAL ANALYSIS

Phosphorus	6.0mg/100g
Potassium	107mg/100g
Sulphur	0.9mg/100g
Magnesium	3.75mg/100g
Calcium	3.31mg/100g
Sodium	1.00mg/100g
Iron	0.4mg/100g
Manganese	0.239mg/100g
Zinc	0.12mg/100g
Copper	0.014mg/100g
Boron	2.47mg/100g
Protein	100mg/100g

Total Acidity (As Acetic Acid) 0.062%

**STORAGE**  
**KEEP IN A COOL DARK PLACE**



# VITEC COD LIVER OIL

- Improves fertility and birth rates
- Reduces the occurrence of Pink Eye
- Acts as a natural anti-inflammatory

## ABOUT VITEC COD LIVER OIL

Vitec Cod Liver Oil is rich in Vitamin A, Vitamin D, and amino fatty acids which together help retain nutrients in the digestive system that allows more efficient absorption. In addition Cod Liver Oil can reduce skin irritation found in some animals and improve overall coat health. The omega-3 fatty acids found in Cod Liver Oil also act as a natural anti-inflammation.

## HOW TO ADMINISTER VITEC COD LIVER OIL

**Drenching:** Cod Liver Oil can be used alone or in conjunction with other drenches. This guarantees intake at the desirable level. Some drench guns may require diluting 50-50 with water.

**Adding to Feed:** Adding to feed or sprinkle over hay or other dry food.

## STRESSFUL TIMES

Cod liver oil is a great alternative to chemical treatments when animals show signs on pinkeye. When symptoms of pinkeye appear it is recommended that an immediately dose of cod liver oil (approx 30ml for a cow) is given orally, plus an additional amount squirted directly into the affected eye (approx 3ml).



## GENERAL FORTNIGHTLY DOSAGE RATES

Calves	10ml
Dairy Cattle	20ml
Beef Cattle	20ml
Horses	25ml
Alpacas	10ml
Pigs	10ml
Goats	5ml
Sheep	5ml
Pets	1ml

## CHEMICAL ANALYSIS

F.F.A	max 1%
Iodine value	150-180
Saponification value	min 180
Density @ 20° C	0.0918-0.0927
Unsaponifiable matter	max 1.3%
Vitamin A (i.u./g)	min 1000
Vitamin D (i.u./g)	min 100
Peroxide value	max 10

**STORAGE**  
**KEEP IN A COOL DARK PLACE**



# KING ISLAND KELP SEAWEED MEAL

NASSA Certified Organic

- **Reduces scouring and worm burden**
- **Improves growth, vitality, and appearance of stock**
- **Increased general health, with resistance to parasites & diseases**

## ABOUT VITEC SEAWEED MEAL

Vitec King Kelp Seaweed Meal is once of natures most complete sources of trace elements and complex carbohydrates. Vitec Seaweed Meal contains 100% Australian bull kelp (*Durvillaea potatorum*) which has been collected from the shores of King Island. Kelp can be used to improve stress tolerance and hydration in extreme heat while also improve fertility and milk production. Kelp is known to stimulates the digestive system of animals enabling livestock to absorb a greater amount of nutrients resulting in overall improved health and resistance to parasites and diseases. Kelp is arguably the best natural source of iodine, which is severely deficient in almost all Australian pasture.

## HOW TO ADMINISTER VITEC KELP SEAWEED MEAL

**Adding to Feed:** Seaweed meal can be added to daily feed ration or placed in a free choice feeder.

## STRESSFUL TIMES

Increased amounts of Seaweed Meal can be extremely beneficial during stressful periods such as adverse weather, feed shortages or pre-calving.



### GENERAL DAILY DOSAGE RATES

General 5 grams per 100kg body weight

Calves	5-10g
Dairy Cattle	20g
Beef Cattle	40-50g
Horses	30-50g
Pigs	30-40g
Alpacas	10-20g
Sheep	5-10g
Goats	5-10g
Pets	1-10g
Poultry	1% of food ration

### CHEMICAL ANALYSIS

Nitrogen	0.87%
Phosphorus	0.13%
Potassium	1.44%
Sulphur	1.03%
Calcium	1.94%
Magnesium	1.24%
Sodium	5.24%
Iron	307ppm
Manganese	8ppm
Zinc	36ppm
Copper	2.09ppm
Cobalt	0.21ppm
Boron	73.7ppm
Molybdenum	0.5ppm
Organic Carbon	31.3%

**STORAGE**  
**KEEP IN A DRY PLACE**



# DIATOMACEOUS EARTH (DE)

## DUST & GRANULES

NASAA Certified Organic

- Organic natural wormer plus flea repellent
- Effective way to eliminate lice and red mites
- Non toxic way to reduce worm burden

### ABOUT DIATOMACEOUS EARTH

Diatomaceous earth is the fossilized shells of microscopic water-dwelling organisms known as diatoms. Diatomaceous earth, also known as diatomite has been mined from sedimentary layers deposited millions of years ago in a fresh water lake. It is light in weight, chalk like in appearance, very porous, and comprises siliceous fossils of plant algae.

#### Diatomaceous Earth - Dust

Can be used as a barrier to control adult flea beetles, sawfly, codling moth, twig borer, thrips, mites, cockroach, slugs, snails and many other insects such as: Aphids, thrips, earwigs, silverfish, and ants. DE Dust can be used on livestock and animals as well as in gain storage controls areas, empty silos and on grain handling machinery such as combine harvesters, belt conveyors and bucket elevators.

#### Diatomaceous Earth - Granules

Can be used as a non toxic natural wormer for animals. DE Granules can be added to feed as an effective way to administer. DE Granules can also be combined with Seaweed Meal for a more effective worming solution.

### HOW TO ADMINISTER DIATOMACEOUS EARTH

Please contact Vitec for more information as applications vary depending on the type of Diatomaceous Earth (Dust vs Granules) and the desired outcome.



#### GENERAL DOSAGE RATES

Please contact Vitec for more information as dosage rates vary depending on the desired outcome.

#### CHEMICAL ANALYSIS

Amorphous Silica	96%
Nitrogen	0.0697%
Phosphorus	0.01%
Potassium	0.01%
Sulphur	0.034%
Calcium	6.15%
Magnesium	3.37%
Sodium	0.14%
Iron	6499ppm
Manganese	154ppm
Zinc	19.1ppm
Copper	6.8ppm
Cobalt	6.67ppm
Boron	7.31ppm
Molybdenum	0.531ppm
Protein	0.435%

STORAGE  
KEEP IN A DRY PLACE



# VITEC TRIO

## Combination of Vitec Min-Kel, Cod Liver Oil & Organic Apple Cider Vinegar

- Improved fertility and conception rates
- Improved progeny & better cycling
- Overall boost in the general health and condition
- Superior bloom on offspring
- Better weaning of offspring with less turn around time
- Increased weight gain by stock
- Resistance to worms and diseases
- Improved skin and coat

### THE COMPLETE WELLNESS PLAN FOR ANIMALS

Vitec Trio is the combination of Vitec Min-Kel, Organic Apple Cider Vinegar, and Cod Liver Oil deliver in one single treatment. These products are extremely beneficial for all animals needing extra nutrients for health or during adverse or stressful conditions. Vitec Trio is comprised of 3 drums, 1 each of:

- 1. Vitec Min-Kel** a liquefied Tasmanian King Kelp boosted with extra minerals – magnesium, copper, zinc, selenium as well as Vitamins A, D, and E. Vitec Min-Kel is a complete nutritional supplement.
- 2. Vitec Organic Cider Vinegar** is unpasturised, naturally fermented and unfiltered retaining over 90 essential minerals, vitamins, trace elements and amino acids.
- 3. Vitec Cod Liver Oil** provides the vital Omega 3 fatty acids and vitamins A & D essential for optimum absorption of nutrients in the digestive system.

### CUSTOMISATION

The three components of Vitec Trio are supplied in separate containers and mixed as needed. Through your own experience and observations, you can customise your Vitec Trio dosage rates to provide optimal benefit and cost efficiency. Eventually, you will be able to devise a plan for an entire year where the dosage rates change according to the seasonal requirements and predictable conditions. Being able to customize your Vitec Trio application gives you the best chance of having a successful complete wellness plan for your stock.

### HOW TO ADMINISTER VITEC TRIO

**Drenching:** Most effective delivery method is drenching as it ensures 100% utilisation and even dosage. However, practical considerations will restrict drenching to sick animals and to some strategic applications.

**Adding to Feed:** Sprinkle over hay or other dry food. Some extra Molasses may need to be added initially to increase acceptance.

**Adding to the Water Supply:** Highly effective but uneven uptake is possible. Min-Kel and Organic Apple Cider are water soluble but oil is not, therefore the Cod Liver Oil component of Vitec Trio should not be administered by adding to the water supply for optimal uptake.

**Eezy Feeder:** Stock self administer Vitec Trio simply by licking the coated balls in the feeder.

### STRESSFUL TIMES

Increased amounts of Vitec Min-Kel and Organic Apple Cider Vinegar can be very beneficial during stressful periods. Stud and Show animals can benefit from a double dose of the Min-Kel and Organic Apple Cider Vinegar approximately two weeks be-fore sale or show.

### GENERAL FORTNIGHTLY DOSAGE RATES

	MIN-KEL	ORGANIC ACV	COD LIVER OIL
Calves	20ml	20ml	10ml
Dairy Cattle	40ml	40ml	20ml
Beef Cattle	20ml	20ml	20ml
Horses	25ml	25ml	25ml
Alpacas	10ml	10ml	10ml
Pigs	10ml	10ml	10ml
Goats	5ml	5ml	5ml
Sheep	5ml	5ml	5ml
Pets	1ml	1ml	1ml





# PAT COLEBY STARTER LICK PACK

- **Improved fertility**
- **Greater conception rates are generally experienced**
- **Improved progeny & better cycling**
- **Overall boost in the general health and condition**
- **Superior bloom on offspring**
- **Better weaning of offspring with less turn around time**
- **Increased weight gain by stock**
- **Resistance to worms and diseases**

## PAT COLEBY MINERALS

From time to time stock are unable to obtain adequate nutrition from pasture and conserved feeds. This can be due to cold, wet conditions in spring, summer drought, poor quality hay and silage and many other reasons.

Other stresses from pregnancy, metabolic disorders, calving and high milk production can compound the basic problem. On top of all this, soils that are acid or out of balance due to not enough fertiliser or too much fertiliser make the problem even worse.

The overall result is stock that are under stress, perform poorly and are prone to metabolic and other diseases. The main problem is often a lack of minerals, particularly trace elements, which are required by the rumen and gut bacteria as much as by the animals themselves.

The Pat Colby Starter Lick Pack includes 6 essential minerals that are most commonly lacking in Australian pastures. The minerals used in the Pat Colby Lick include Seaweed Meal, Dolomite, Copper, Sulphur, Lime and Salt.

The “Lick” is a balanced mix that has been tested with outstanding results across a variety of livestock animals and is a great alternative and possibly easier and more effective way of offering the necessary minerals for those animals in need.

**Please contact Vitec for a list of the diseases that can arise when certain minerals are in short supply.**

## PAT COLEBY LICK STARTER PACK

Includes 6 minerals that have been separately packed. Each mineral should be placed into a free choice feeder when livestock have the option to consume the mineral that they are deficient in. The Pat Coleby Starter Pack is a great way to determine the essential minerals that your stock may be lacking.

**The Pat Coleby Starter Pack includes the following:**

- **AUSTRALIAN MINERALISED SALT x 5 kg**
- **KING ISLAND SEAWEED MEAL x 4 kg**
- **DOLOMITE x 4 kg**
- **LIME x 4 kg**
- **PRILLED SULPHUR x 2 kg**
- **COPPER SULPHATE x 1 kg**

# Vitec Eezy Feeder

The Eezy Feeder by Vitec is a smart alternative to the drench gun. It saves time, effort and money. The Eezy Feeder is recommended when administering Vitec's Trio as it saves time and wastage that can be caused by residue in the drenching gun. The Eezy Feeder is ideal for sheep, goats, alpacas, cattle, pigs and more.

The Eezy Feeder is portable, easy to refill and can hold up to 17lts in liquid stock supplements.

**Why not try it out today!!**

- **Easy to administer stock supplements**
- **Easy to fill and carry**
- **Easy to relocate**
- **Easy to train livestock to use**
- **Easy to install**



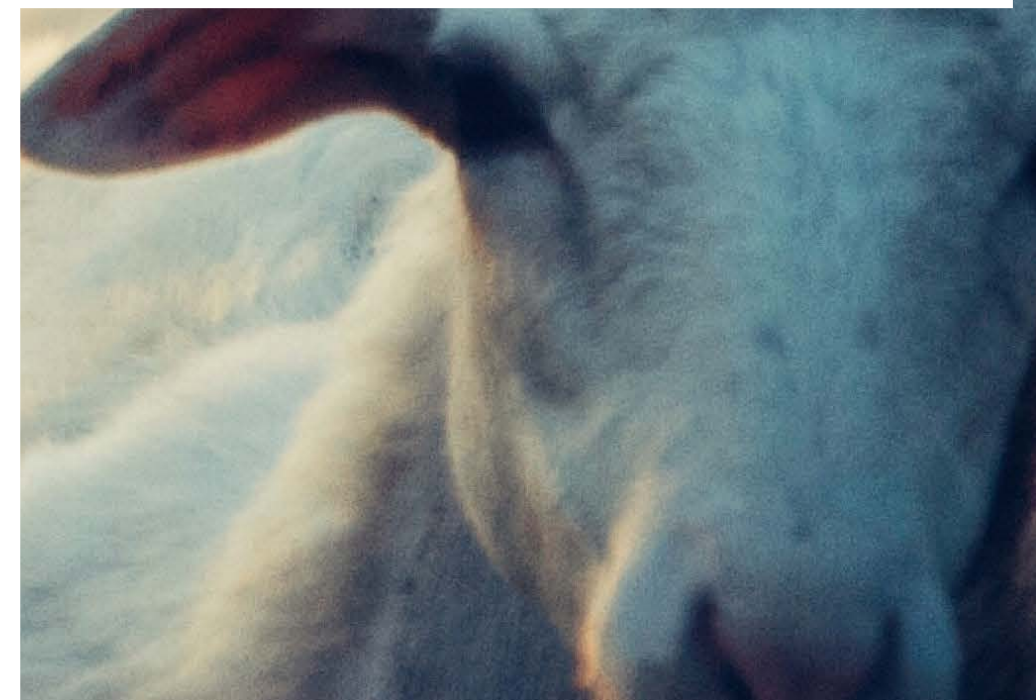


# OTHER STOCK SUPPLEMENTS

- Vitamin C
- Aust. Dolomite
- Copper Sulphate
- Himalayan Rock Salt
- Aust. Lime
- Mineralised Aust. Salt
- Aust. Sulphur (Prilled)
- Diatomaceous Earth (DE)  
- Granules, Dust, Bonsai & Orchid
- Sprayable Lime
- Sprayable Gypsum
- Sprayable Dolomite
- Potassium Sulphate
- Copper Sulphate
- Garden Grade Seaweed Meal
- Potassium Humate Granules
- Fulvic Acid
- Epsom Salts
- Palogonite (Basalt Dust)



# MORE THAN JUST FERTILISER







## **MORE THAN JUST FERTILISER...**

**VITEC ORGANICS PTY LTD**

**1/9 Yazaki Way, Carrum Downs, VIC, 3201**

**1800 622 345**

**info@vitec.com.au**

**www.vitec.com.au**