

SUSTAINAPOD™

SUSTAINABLE. PRE-ASSEMBLED. MODULAR.
OUTDOOR KITCHEN RANGE FOR WEBER®

The SustainaPod® Outdoor Kitchen Range is designed exclusively for the Weber Range of Sit On and Built In barbecues. Sized to fit perfectly on your patio, balcony or outdoor entertainment area, your SustainaPod can be customised with mix 'n' match cabinet and benchtop colours.

sustainapod.com.au



Available from Weber Stores and select Weber Specialist Dealers

SustainaPod® All-Weather Series FEATURES



Weather and UV resistant
withstands sun, heat, rain & wind



Easy-to-install pre-assembled pods
with height adjustable feet



Durable and low maintenance
components & parts



Functional built-in storage
& venting for unsightly gas cylinders



Environmentally preferable products
& sustainable building practices



Proudly Australian
designed, manufactured & owned



SustainaPod Product Partners



Laminex®

Lithofin

blum®



SustainaPod® All-Weather Series

TURN YOUR WEBER INTO AN OUTDOOR KITCHEN

PLEASE
RECYCLE
ME!



1 SELECT YOUR WEBER BARBECUE

Sit On or Built In



Sit On Weber Q and Baby Q Series



Weber Family Q Built In (Q3600AU)



Weber Summit Built In E-460 or E-660 —



2 CHOOSE YOUR MODEL (OR REQUEST A CUSTOM DESIGN)

Sit On Model | Built In Models for any Weber Built In Barbecue



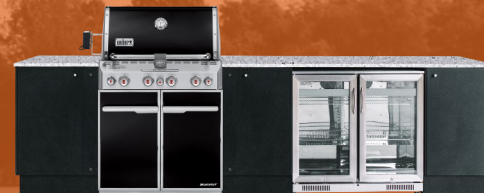
ARBOR 1-POD



BYRON 3-PODS



ELSTON 4-PODS + 62CM FRIDGE SPACE



NEPTUNE 4-PODS + 92CM FRIDGE SPACE

SIZE YOUR SPACE Pod sizes are eco-consciously pre-sized and designed to maximise use of materials, minimising waste

Arbor	Sit On Weber Q and Baby Q Series	L 80cm x W 55 x H 70	
Byron	Q3600AU L 182.1cm x W 65 x H 90	Summit E-460 L 188.6cm x W 65 x H 90	Summit E-660 L 208.6cm x W 65 x H 90
Elston	Q3600AU L 291.2cm x W 65 x H 90	Summit E-460 L 297.7cm x W 65 x H 90	Summit E-660 L 317.7cm x W 65 x H 90
Neptune	Q3600AU L 321.2cm x W 65 x H 90	Summit E-460 L 327.7cm x W 65 x H 90	Summit E-660 L 347.7cm x W 65 x H 90

3 CUSTOMISE YOUR DESIGN

Optional Upgrades

Undermount



16L Slim Bowl
& Gooseneck Tap

Bin Drawer Pod



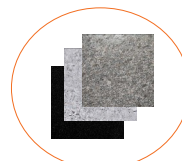
Drawer Mounted
40L Pull-out Twin Bin

3-Drawer Pod



3-Drawers with
Blum® Soft-Close Runners

Splashback



20mm Natural Granite, 40cm H
Colour to Match Benchtop

Add Pods



Add Corner Void or Standard
Pods, with Optional Upgrades

4 CREATE YOUR OUTDOOR LOOK

Mix 'n' Match Colours

Cabinet

12MM EXTERIOR GRADE DECORATIVE BOARD



Bespeckled Grey Stone Mortar Sentry Manganese

Benchtop

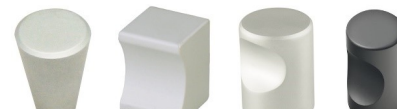
20MM NATURAL GRANITE



Absolute Black Colonial White Steel Grey

Handles

CHOICE OF KNOB STYLE



Konico Dexion Cylinder Slim Black

⑦ Year Limited Warranty - Laminex® Alfresco Compact Laminate

②① Year Written Warranty - Lithofin MN Stain-Stop

STANDARD INCLUSIONS

Door Cabinets with Blum® soft-close hinges and shelves | Cabinets are hand-crafted using exterior grade board and natural granite for outdoor use | Kickboard in matching 12mm exterior grade board | Choice of colour, benchtop and handle | Choice of right-side or left-side fridge layout for Elston and Neptune models

Barbecues and fridges sold separately | The models and colours on this brochure may vary to actual | Due to continuous product improvement, all models and specifications are subject to change without notice

© VerdeLife Pty Ltd 2016

verdelife