

CIVIQ™

Public-use Products



Aquafil FlexiWash

Handwash Station

Specification and Technical

Issued: September 2020



Stylish and durable, the Aquafil FlexiWash hand washing station offers a better way to wash your hands in public environments.

The unit features a sensor activated tap which helps to reduce the chances of cross contamination at touchpoints and customisable, interchangeable signage panels with graffiti protection. Optional extras include a hand towel dispenser, and a sensor activated soap dispenser. The unit also features high quality, readily serviceable components. The hand wash stations are designed to increase the availability of hand washing facilities in public environments as washing your hands properly can help prevent the spread of germs (like bacteria and viruses) that cause disease. Multiple customised signage panels provide a platform for branding and messaging. The vandal-resistant design increases the life span of the product making it an ideal solution for educational, commercial and community facilities as well as local council spaces.

Product Features



DDA-compliant wheelchair-accessible design



Customisable, interchangeable signage panels with graffiti



Sensor activated tap



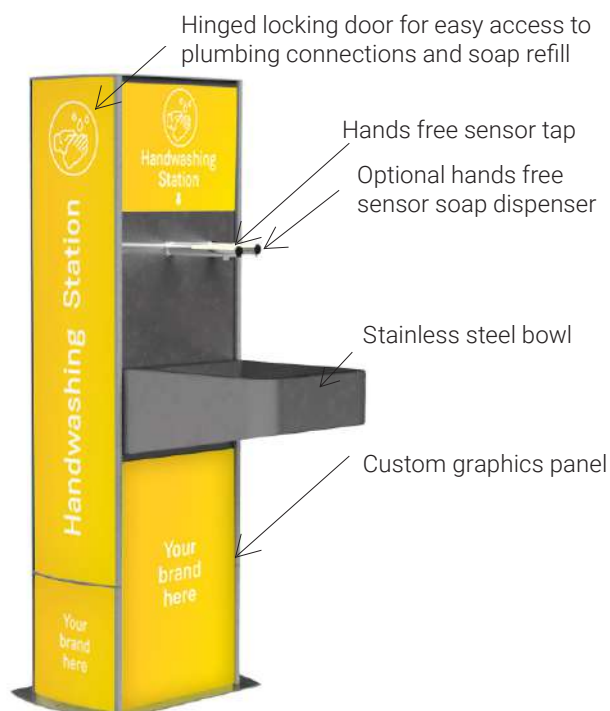
Freestanding



Splashback

Additional Options

- Sensor activated soap dispenser
- Hand towel dispenser
- Mains power
- Artwork on the back of the unit



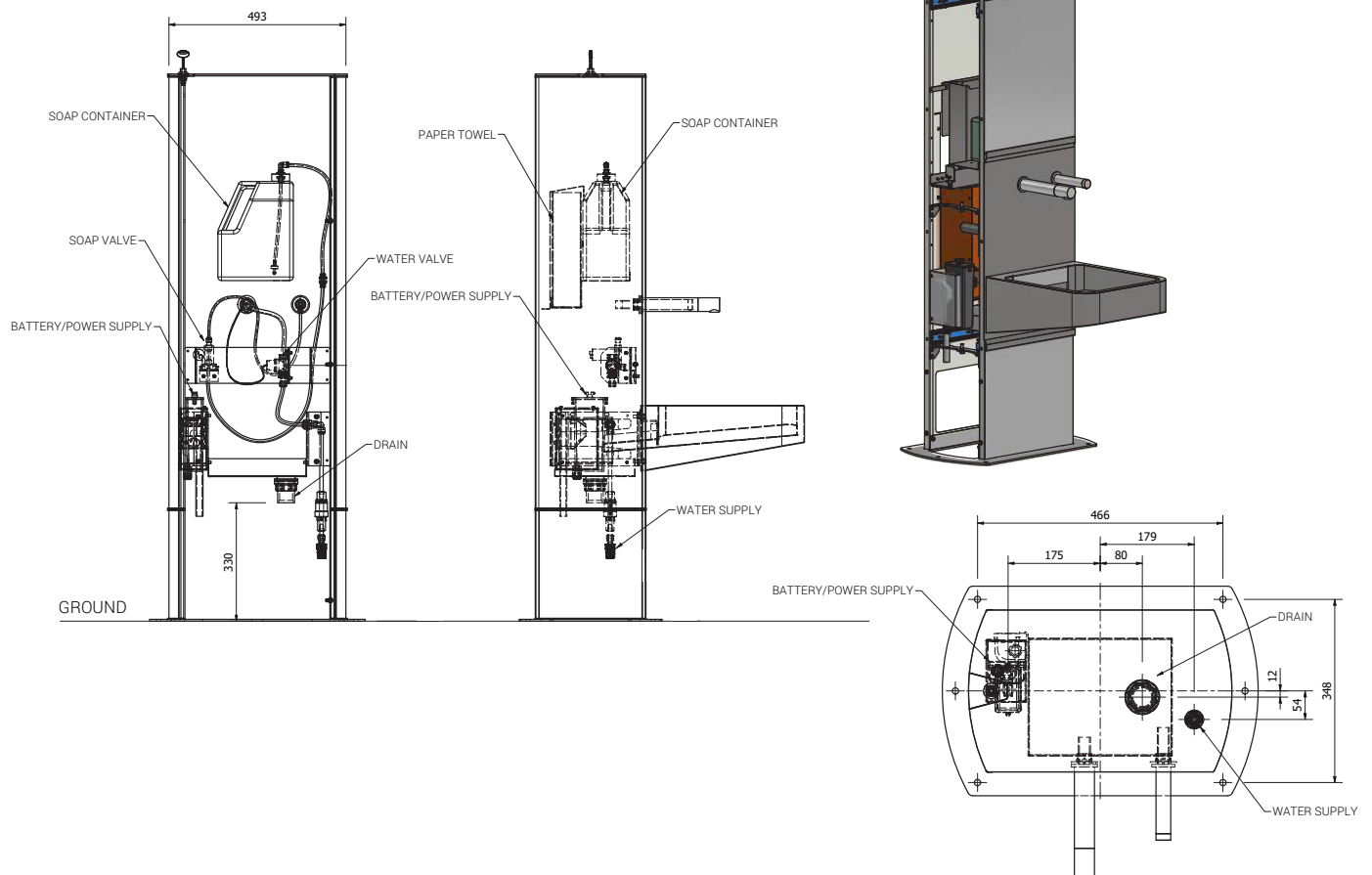
Issued: September 2020

Technical Details

Unit frame construction	Stainless steel
Sign panel housing	Anodised aluminium
Sensor tap	Battery operated
Sensor tap operating water pressure	0.5 - 8.0 bar
Sensor tap water connection	½ BSP female
Sensor soap dispenser	Battery operated
Soap holding capacity	Minimum 1 litre
Drain connection	40mm

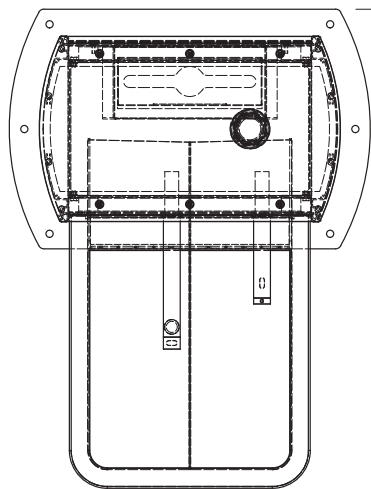
* Please refer to the Aquafil FlexiWash Product Warranty for full terms and conditions.

** For optimal performance in outdoor spaces, install the Aquafil FlexiWash station undercover or out of direct sunlight.



Issued: September 2020

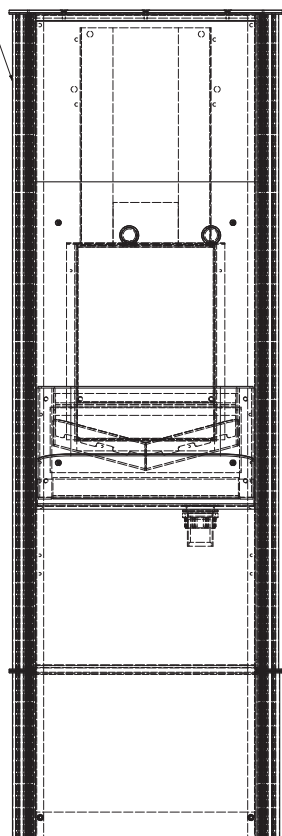
Plumbing Connections



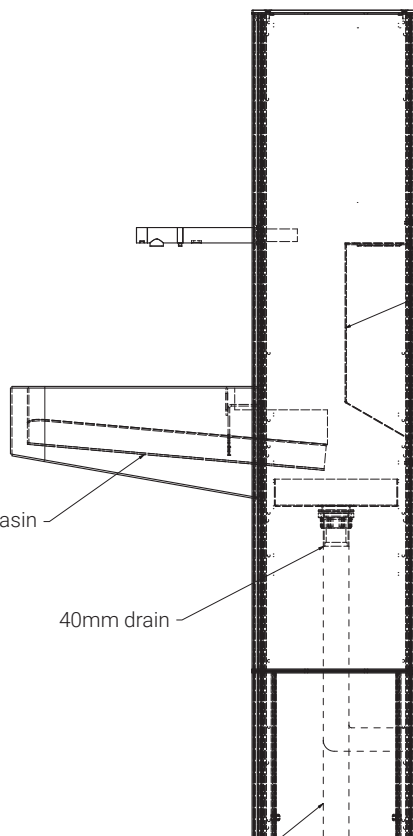
Note: paper towel dispenser models cannot be installed against the wall

Top view

Access internal via side door



Front view



Side view

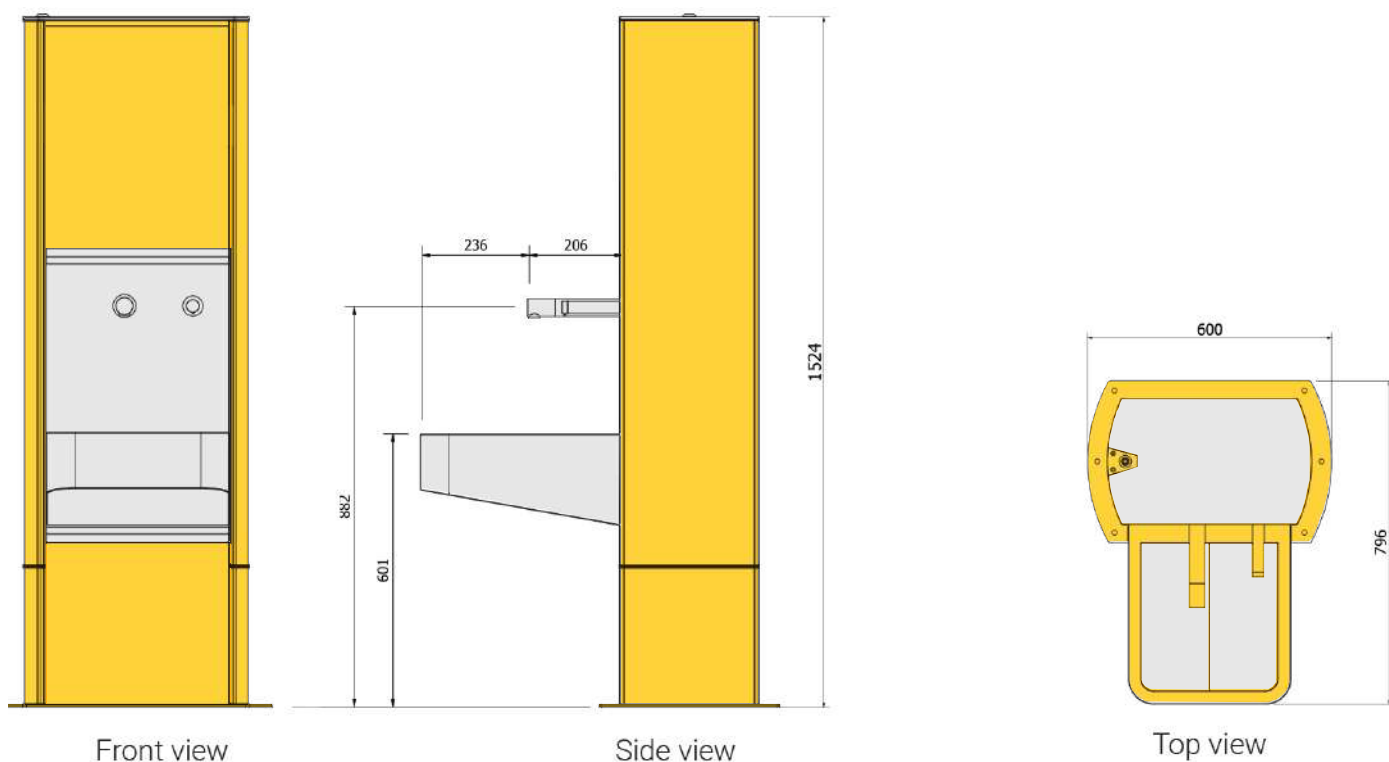
Water-feed and drain connection from bottom is recommended

The Aquafil FlexiWash is available in two sizes to suit differing customer requirements. Each option is highly configurable and can accommodate the different feature add-ons.

Senior FlexiWash



Junior FlexiWash



Issued: September 2020



Wash your hands here



Wash your hands here



Your brand here

Your brand here

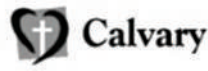
Other CIVIQ Products

- Drinking fountains and bottle refill stations
- Outdoor Showers
- Notice boards and Poster Displays
- Wayfinding Signage
- Bicycle Security and Repair Stations
- Handwashing stations

Other CIVIQ Services

- Customer design and manufacture
- Installation
- Maintenance

Who we've worked with



➤ CIVIQ.COM.AU ☎ 1300 600 300 ✉ sales@civiq.com.au

8-10 Giffard St
Silverwater
NSW 2128

Level 9
440 Collins St
Melbourne
VIC 3000

Level 54
111 Eagle Street
Brisbane
QLD 4000

1/10 Albert Avenue
Broadbeach
QLD 4218

48 Magpie Street
Singleton
NSW 2330