

**Plotlogic delivers highly accurate ore characterisation in real time, enabling greater recovery, reducing waste and enhancing the geological model.**



# Plotlogic®

Plotlogic is a global technology company that uses artificial intelligence and hyperspectral imaging to develop innovative solutions that enable greater ore recovery, making mining safer, more profitable and environmentally sustainable.

Our solutions aim to optimise mine scheduling and minimise unknowns during the operation.

## Our Vision

Plotlogic's vision is to deliver the future of natural resources.

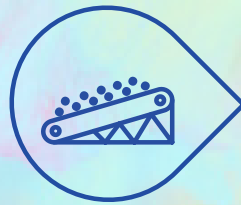
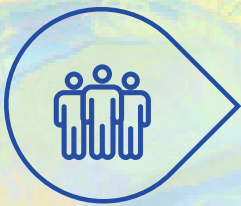
## Our Mission

Enable precision mining and fully autonomous remotely controlled operations with real-time in-mine material grading systems.

## Our Approach

We implement solutions specific to your needs that achieve expanding profit margins, enhanced mine efficiency, and improved resource sustainability.

# OreSense® Value



The OreSense® system fuses data in real-time from LiDAR, hyperspectral imaging, and advanced algorithms, to deliver centimetre grade control and mineral mapping. Using the OreSense® system mining companies are able to:

- Identify mineralogy, ore grade and deleterious materials to clearly define ore/waste boundaries and improve their geological model.
- Increase revenue and productivity through selective mining.
- Enhance plant performance and materials handling through optimised scheduling.
- Facilitate remote working and early identification of hazardous materials.

## Benefits

- Ore characterisation and mineralogy mapping.
- Ore-waste boundary mapping.
- Ore Grade estimations.
- Stockpile blend optimisation.
- Clay and deleterious material abundance.
- Blast fragmentation optimisation and post-blast movement reconciliation.
- Moisture determination.

# Maximise Performance

OreSense® combines cutting edge data management, visualisation and real time computing to maximise mining efficiency and yield.

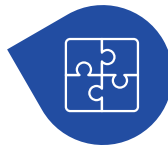
## Rapid Data Integration

Rapid integration of data into site geology modelling.



## User Simplicity

Simple set-up and field deployment.



## Edge Based Algorithms

Full automated data processing and QC. Results in under 60 seconds.



## Customer Interface

3D visualiser and real time client access.



## 24/7 Customer Support

Efficient support and issue resolution.



## LiDAR and GPS Combination

Precise registration of data to a geological model.



## Rating

**IP67 Rated**

## Weight

**<40kg**

## Operating Temperature

**-40 °C to 60°C**

## LiDAR Range

**0 - 200m**

## GPS Accuracy

**<1cm**

## Data Storage

**>2TB**



# Configurations

Plotlogic's OreSense® system is available in a variety of configurations and can be tailored to meet specific requirements.



## OreSense® Pit Scanning

The Pit Scanning configuration provides flexible use with options to scan in pit, at stockpiles and highwalls. Scanning is performed semi-autonomously, is non-invasive and doesn't require contact with the mining face.



## OreSense® OTC

Over the Conveyor - Mounted above your conveyor belt for accurate, real-time material characterisation with limited need for calibration and maintenance.



## OreSense® Shovel

Integrated into a dig fleet, Oresense® Shovel produces material characterisation of the entire ore face while digging. OreSense® Shovel produces a vertical line scan of the Field of View (FOV) of the entire ore face.



## OreSense® Blast Hole

The Blast Hole configuration is a probe coupled to a robust 20m cable, providing point spectra of blast holes walls.



# On-Site

Plotlogic work in partnership with you to integrate the OreSense® system into your existing processes. The system is easily deployable to any mine site and can commence high precision ore mapping from Day 1.

## Ease of Deployment

- From the very first meeting Plotlogic start to develop an understanding of your company and your mine site/s.
- We understand your needs and requirements and determine the most appropriate configuration for your site/s.
- We analyse samples and your geological model to calibrate the OreSense system to your needs.
- We work with you every step of the way from inception of the system to analysing results to ensure the best results.

## Immediate Results

- Once deployed we can commence high precision ore mapping from Day 1 – delivering immediate value to our customers.
- Daily dashboard reporting and formal KPI reviews.
- If the OreSense system doesn't deliver results then there is no charge.

## Training & Support

- Dedicated support staff are allocated during initial set-up, installation, commissioning, and training of site staff.
- 24/7 support.



Enable precision mining to help reduce environmental impact

Reduce operational greenhouse gas emissions

Minimise human exposure to active mining operations

**PLOTLOGIC**  
KNOWLEDGE IN TONNES