

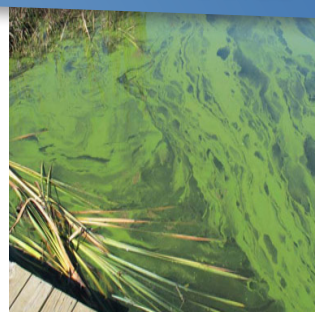
# AQUATIC BARLEY STRAW EXTRACT

TARGET: **PONDS & DAMS**



AQUATIC TECHNOLOGIES

The  
*Algae Treatment*  
Experts



*The safe & natural algae<sup>1</sup> treatment in ponds, fish ponds and dams.*

## AQUATIC BARLEY STRAW EXTRACT

- Environmentally acceptable and sustainable method of algae control<sup>2</sup>
- Quick Acting
- Harmless to pets, plants & people
- Natural and Eco-friendly
- Australian Made & Owned

Barley Straw Extracts have shown to reduce algae growth by up to 90%<sup>3</sup>

### SUITABLE FOR

<b>Fish Pond</b>	<b>Small Pond</b>	<b>Large Pond</b>	<b>Small Dam</b>
0 - 15,000L 0 - 20m <sup>2</sup>		15,000L - 50,000L 0 - 50m <sup>2</sup>	50,000L - 1ML 50m <sup>2</sup> - 2,000m <sup>2</sup>

### How Does Barley Straw Work?

Aquatic Barley Straw Extract is a super-concentrated liquid made from whole barley straw designed for easy-to-use application. This is a no mess application product.

This powerful formula is the natural solution for maintaining healthy, clear and clean pond water all year round. Aquatic Barley Straw Extract quickly gives results letting you enjoy the benefits of natural barley straw. No need to wait when you are using Aquatic Barley Straw Extract, it will naturally improve water purity.

Decomposing barley straw in well aerated water releases compounds that inhibit algal growth. It has been shown that barley straw is active against a range of algae including unicellular and filamentous forms<sup>1</sup>.

The high carbon-to-nitrogen ratio of barley straw means that when it breaks down it uses available nitrogen and phosphorus in the water. This reduces conditions favourable to algae growth<sup>4</sup>.

**Perfectly safe to use around fish, plants and people.**

### SAFE FOR



Fish, Aquatic Plants, Pets, Wildlife, The Environment & is a Natural product.

### BUY ONLINE



**AQUATIC TECHNOLOGIES**  
*The Water Treatment Experts*

For more information visit:  
[WWW.AQUATICTECHNOLOGIES.COM.AU](http://WWW.AQUATICTECHNOLOGIES.COM.AU)

# HOW TO USE: AQUATIC BARLEY STRAW EXTRACT



## APPLICATION RATES:



*The Algae Treatment Experts*

### Aquatic Barley Straw Extract

#### Enclosed Water Tanks

0 - 20,000L  
0 - 20m<sup>2</sup>



<b>RECOMMENDED QUANTITY</b>	We recommend purchasing between 500mL-1L.
<b>APPLICATION RATE</b>	10mL of product for every 100L of water.
<b>HOW MUCH TO APPLY</b>	Gently shake container to mix. Measure the required amount of product & pour directly into the water.
<b>HOW OFTEN TO APPLY</b>	Apply once a month

#### Small Outdoor Ponds, Fountains or Water Features

0 - 15,000L  
0 - 20m<sup>2</sup>



Fish Ponds



Small Ponds

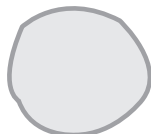
<b>RECOMMENDED QUANTITY</b>	We recommend purchasing between 1L-5 Litres.
<b>APPLICATION RATE</b>	15mL of product for every 100L of water.
<b>HOW MUCH TO APPLY</b>	Gently shake container to mix. Measure the required amount of product & pour directly into the water.
<b>HOW OFTEN TO APPLY</b>	Apply twice in the first week then weekly thereafter.

#### Large Ponds and Dams

15,000L- 50,000L  
0 - 50m<sup>2</sup>



Large Ponds



Small Dams

<b>RECOMMENDED QUANTITY</b>	We recommend purchasing between 5L-20 Litres.
<b>APPLICATION RATE</b>	Large Ponds: 30mL of product for every 2000L of water. Large Dams: 10L of product for every 1ML of water.
<b>HOW MUCH TO APPLY</b>	Gently shake container to mix. Measure required amount & pour directly into the water.
<b>HOW OFTEN TO APPLY</b>	Apply twice in the first week then, monthly thereafter.

*\*Always read the product label for directions.*

#### For Best Results:

For water with high turbidity, or poor water clarity, apply an additional 20% more product until clarity improves.

References: [1] J.M. Pillinger, J.A. Cooper, and I. Ridge, 'Role of Phenolic Compounds in The Antialgal Activity of Barley Straw', *Journal of Chemical Ecology*, vol.20, no.7, 1994. [2] J. Holmes, 'Barley Straw: A Natural Algae Inhibitor', in 4th Annual WIOA NSW Water Industry Engineers & Operators Conference, Bathurst, 2010, pp. 33-39; Slade, M. *Pressure Sewer Services Australia*, 2020. [3] P. R. Shewry and S. E. Ullrich, *Barley : chemistry and technology*, Second edition. ed. St. Paul, Minnesota : American Association of Cereal Chemists, 2014. [4] A. Erickson. (2020). Managing blue-green algae on farms in Western Australia. Available: <https://www.agric.wa.gov.au/livestock-biosecurity/managing-blue-green-algae-farms-western-australia>.