



INFUSED WITH NATURAL
AUSTRALIAN BOTANICALS

FOR SHINY, SOFT BEAUTIFUL HAIR

SULPHATE FREE / PARABEN FREE / VEGAN FRIENDLY

juuce
FOR THIRSTY HAIR

**INFUSED WITH NATURAL
AUSTRALIAN BOTANICALS**
AUSTRALIAN OWNED AND MADE

Juuce Haircare is infused with six of the most powerful natural Australian botanicals
DANDELION . ALOE VERA . KAKADU PLUM . WATTLE SEED . DESERT LIME . QUANDONG

These ingredients provide all hair types with the essential elements to
PROTECT . MOISTURISE . COLOUR EXTEND . REPAIR . SMOOTH . SOOTHE

The use of natural botanicals can boost your hair with basic elements necessary
for hair to stay healthy, strong and not vulnerable to the external environment.

PROTECTING DANDELION root is a rich source of vitamin A, C, and E as well as B-complex vitamins.
Every part of the dandelion plant is rich in antioxidants that prevent free-radical damage.

MOISTURISING ALOE VERA contains proteolytic enzymes which act as a moisturiser to condition and leave
your hair smooth and shiny. It promotes hair growth, prevents itching on the scalp and reduces dandruff.

COLOUR EXTENDING KAKADU PLUM is Australia's super natural ingredient performer with
exceptional antioxidant composition. It is believed that kakadu plum could provide the
most powerful natural anti colour fade treatment.

REPAIRING WATTLE SEED contains high levels of amino acids to help repair and promote youthful hair.
The powerful antioxidant properties encourage elasticity and suppleness in ageing cells
promoting healthy cell turnover.

SMOOTHING DESERT LIME is an anti-humectant with high levels of glycosides for hydrating
and promoting smoother, softer looking hair, also assisting with blocking out short UV rays
acting as a natural sunscreen.

SOOTHING QUANDONG is super high in antioxidants, which are important for fighting free radicals.
Quandong contains vitamin C which is essential for the growth of healthy cells. It also contains
vitamin E which is a powerful hydrating nutrient.

JUUCE HAIRCARE for shiny, soft beautiful hair uses vegan friendly formulations and is
sulphate, paraben and cruelty free. If you want a clear conscience while achieving the ultimate
in hair care performance then you need Juuce!



SHAMPOO / CONDITIONER



COLOUR LIFE

COLOUR PROTECTION SHAMPOO/CONDITIONER

Shields colour treated dry – very dry hair by defending against the enemies that cause colour fade whilst adding condition and shine. Powerful antioxidants repair and moisturise to increase colour lasting power and intensity.

Anti-heat + UV + humidity + oxidation protection.

PROTECT . REVIVE . DEFEND COLOUR



ULTRA REPAIR

REPAIRING SHAMPOO/CONDITIONER

Rejuvenates all damaged very dry – ultra dry hair with nourishing active ingredients and natural smoothing agents which penetrate deep into the core of the hair. Restores internal strength to reinforce, protect and smooth the cuticle surface. Anti-heat + UV + humidity + oxidation protection.

NOURISH . REPAIR . REJUVENATE



SHAMPOO / CONDITIONER



MIRACLE D.FRIZZ

SMOOTHING SHAMPOO/CONDITIONER

Tames all types of frizzy, coarse, unruly very dry – extremely dry hair with intensive smoothing agents to reduce volume. Contains ultimate cuticle smoothing properties to maintain smooth, silky soft hair.

Anti-heat + UV + humidity + oxidation protection.

TAME FRIZZ . SMOOTH . CALM CURL



ARGAN SOFT

SOOTHING SHAMPOO/CONDITIONER

Infused with argan oil and conditioning agents to nourish, strengthen and replenish frizzy, fragile very dry – extremely dry hair.

Provides shine, manageability, movement and extreme softness.

Anti-heat + UV + humidity + oxidation protection.

REPLENISH . SOOTHE . STRENGTHEN



SHAMPOO / CONDITIONER



SILK HYDRATE

HYDRATING SHAMPOO/CONDITIONER

Instantly begins to restore natural moisture and protein balance to all chemically treated dry – very dry hair. Strengthens to boost resistance to breakage and reduce the formation of split ends.

Anti-heat + UV + humidity + oxidation protection.

MOISTURISE . HYDRATE . RESTORE



FULL VOLUME

THICKENING SHAMPOO/CONDITIONER

Body boosting carbohydrates and thickening polymers increase volume while strengthening. Weightless conditioning agents improve manageability in all types of fine hair.

Anti-heat + UV + humidity + oxidation protection.

THICKEN . BOOST . INCREASE VOLUME



SHAMPOO / CONDITIONER



ULTRA BLONDE

TONING SHAMPOO/CONDITIONER

Infused with argan oil and conditioning agents to nourish all types of blonde hair, while reducing gold and yellow tones with blue violet pigments.

Anti-heat + UV + humidity + oxidation protection.

SOOTHE . TONE . REDUCE YELLOW



SILVER BLONDE

INTENSE TONING SHAMPOO/CONDITIONER

Micro blue violet colour pigments penetrate deeper into the hair shaft dramatically reducing gold and yellow tones in all blonde, bleached and highlighted hair.

Anti-heat + UV + humidity + oxidation protection.

REMOVE YELLOW . SAVE BLONDE . INTENSE TONE



PEPPERMINT

SCALP STIMULATING SHAMPOO/CONDITIONER

Blended with invigorating natural botanicals and oils which treat the hair and invigorate the scalp making them healthier, cleaner and stronger.

Anti-heat + UV + humidity + oxidation protection.

STIMULATE . TREAT . CARE FOR SCALP



DEEP CLEANSE

HIGH CLEANSE SHAMPOO

Removes styling product, grime and chlorine build up in all hair types.

Regular use controls an oily scalp whilst protecting against dry ends with

non-oily moisturising agents. Anti-heat + UV + humidity + oxidation protection.

INVIGORATE . CLEAN . CARE FOR SCALP



ANTI-DANDRUFF

FLAKE REMOVING SHAMPOO

Removes flakiness and relieves itchy scalp with soothing

botanical extracts to control dandruff and scalp irritations.

Anti-heat + UV + humidity + oxidation protection.

REDUCE FLAKE . SOOTHE . REFRESH SCALP



DIRTY DEEDS

DRY SHAMPOO

Cleans hair without water with unique, natural, absorbing powder spray that gently removes dirt, styling aids and excess oil to leave hair feeling clean, soft and smelling fresh.

REFRESH . CLEANSE . WITHOUT WATER



SILKY SOFT XPRESS

DRY CONDITIONER

Express conditioning without water and 10 instant benefits – detangle, moisturise, smooth, repair cuticle, control flyaway, shine, silky conditioner, soften, restore, reduce frizz.

SMOOTH . D.FRIZZ . REPAIR ENDS . WITHOUT WATER



INTENSE NOURISHING MASK



REPAIR MASK TREATMENT

Intense soothing and replenishing for stressed hair with shea butter repairing and natural botanicals. Restore shiny, soft beautiful hair nourishing stressed hair types. Anti-heat + UV + humidity + oxidation protection.

REPAIR . SOOTHE . REPLENISH



BLONDE MASK TREATMENT

Revives very dry/damaged blonde hair with shea butter repairing and argan oil smoothing to restore strength to the inner and outer hair shaft. Botanically boosted to nourish brittle blondes and pigmented to cancel yellow tones. Anti-heat + UV + humidity + oxidation protection.

RESTORE . TONE . REVIVE



MOISTURE MASK TREATMENT

Intense hydration to restore and retain moisture with avocado oil and soy protein to smooth and soothe all dehydrated hair types. Botanically boosted to revive and maintain soft, shiny, smooth hair. Anti-heat + UV + humidity + oxidation protection.

HYDRATE . D.FRIZZ . SMOOTH



REPAIR/RECONSTRUCT TREATMENT



SHOCK TREATMENT COLOUR LOCK REPAIR TREATMENT

Colour preserving treatment locks in colour and defends to extend colour life. Hydrates and strengthens damaged hair by restoring moisture and nourishment. Botanically enriched with six organic ingredients to revitalise hair and scalp. Anti-heat + UV + oxidation protection.

STRENGTHEN . HYDRATE . PROTECT COLOUR



1 MINUTE TREATMENT REPAIR BONDING TREATMENT

Moroccan lava clay treatment is an intense 60 second repair treatment with Australian natural botanicals which instantly saturates extremely dry or damaged hair to rejuvenate, restore and rebond. Moroccan lava clay acts to moisturise and soften. It reduces dryness while also removing toxins and product buildup improving hair's elasticity and unblocking the pores of your scalp. Anti-heat + UV + humidity + oxidation protection.

RESTORE . REBOND . REJUVENATE



30 SECOND RECONSTRUCTANT TREATMENT



INTENSE-LOK MAJIK INSTANT 30 SECOND TREATMENT

Instant 30 second double action repair treatment reconstructs all weak, damaged hair and locks in moisture to defend against heat and other damaging elements which dehydrate and weaken the hair.

Anti-heat + UV + humidity + oxidation protection.

WITH HEAT PROTECTION



COLOUR-LOK MAJIK INSTANT 30 SECOND TREATMENT

Instant 30 second double action repair treatment reconstructs all coloured hair and locks in colour to defend against heat and other colour fade elements.

Anti-heat + UV + humidity + oxidation protection.

WITH HEAT PROTECTION



BLONDE-LOK MAJIK INSTANT 30 SECOND TREATMENT

Instant 30 second double action repair treatment reconstructs all weak, damaged blonde hair, locking in moisture to defend against heat and other damaging elements which dehydrate and weaken blonde hair.

Anti-heat + UV + humidity + oxidation protection.

WITH HEAT PROTECTION



BLONDE SEMI-PERMANENT CONDITIONING FOAM



BLONDE VIOLET SEMI-PERMANENT CONDITIONING FOAM

A pale violet blonde toner that delivers temporary violet pigments to blonde hair.

Neutralises unwanted warmth and maintains colour in between salon visits.

- Step 1** Shampoo and towel dry hair.
- Step 2** Use gloves as colour may stain hands.
- Step 3** Shake can, point applicator down and press nozzle to dispense foam to cover palm of hand.
- Step 4** Distribute an adequate amount of colour throughout the hair using a wide tooth comb.

Timing 5-30 minutes. Deeper tones will result if left on longer. Rinse out and style as normal.

CONDITIONING . COLOUR . TONE BLONDE/YELLOW



BLONDE VIOLET PLUS SEMI-PERMANENT CONDITIONING FOAM

A violet blonde toner that delivers temporary violet pigments to blonde hair. Micro violet pigments increase neutralising effect to cancel out unwanted gold and yellow tones in all types of blonde hair.

- Step 1** Shampoo and towel dry hair.
- Step 2** Use gloves as colour may stain hands.
- Step 3** Shake can, point applicator down and press nozzle to dispense foam to cover palm of hand.
- Step 4** Distribute an adequate amount of colour throughout the hair using a wide tooth comb.

Timing 2-10 minutes. Deeper tones will result if left on longer. Rinse out and style as normal.

CONDITIONING . COLOUR . TONE BLONDE/GOLD



REPAIR/PROTECT MOISTURISING LEAVE IN TREATMENT



KNOT KNOTTY DETANGLING TREATMENT

Instantly detangles knots by smoothing the hair's cuticle surface to improve shiny condition and reduce static flyaway. Makes all types of hair more manageable. Anti-heat + UV + humidity + oxidation protection.

DETANGLE . SMOOTH . CONDITION

INSTANT REHAB INSTANT TREATMENT

Instantly detangles, repairs and moisturises extremely dry or damaged lifeless hair. Wheat and soy proteins combine with natural Australian botanicals to rebuild inner core strength and restore elasticity, shine and condition. Anti-heat + UV + humidity + oxidation protection.



REVIVE . REPAIR . RECONSTRUCT

20 IN ONE MIRACLE ALL IN ONE TREATMENT

Twenty instant benefits all in one treatment reinforced with Moroccan lava clay and natural Australian botanicals to – detangle, repair cuticle, extend colour life, smooth, prevent colour fade, soften, control flyaway, reduce frizz, protect against heat, revive, condition, prevent sun damage, moisturise, restore, shine, seal ends, hydrate, adds body. Anti-heat + UV + humidity + oxidation protection.



D.FRIZZ . REPAIR . MOISTURISE . PREVENT COLOUR FADE

REVIVA CREAM MOISTURE FOAM TREATMENT

Instantly revives all dehydrated chemically treated hair by adding weightless moisture to detangle, condition and shine. Strengthens all hair types and improves curl retention. Anti-heat + UV + humidity + oxidation protection.

DETANGLE . REVIVE . MOISTURISE . IDEAL FOR CURLY HAIR





SMOOTH ENZ LEAVE-IN ENDS REPAIR

Repairs and seals split ends, with moisture smoothing botanical oils, to d-frizz, shine and soften. Protects, smooths and nourishes all damaged or stressed hair types. Anti-heat + UV + humidity + oxidation protection.

MOISTURISE . SMOOTH . PROTECT



BLONDE REVIVENZ LEAVE-IN BLONDE ENDS REPAIR

Coloured with violet pigment to cancel out unwanted yellow and gold tones. Reinforced with avocado, Blonde Revvenz repairs and seals ends with exclusive natural Australian botanicals to moisturise, d-frizz, shine and soften. Anti-heat + UV + humidity + oxidation protection.

RESTORE . TONE . REDUCE GOLD



SOLAR ENZ LEAVE-IN SUN PROTECTION

Collagen infused to restore moisture and strength to coloured chemically damaged hair, improving elasticity and colour retention. Exclusive natural Australian botanicals combine to moisturise, smooth and d-frizz. Maximum colour defence is assured by protecting against sun, heat, chlorine and salt. Anti-heat + UV + humidity protection.

SAVE COLOUR . SHINE . REDUCE ENDS FADE



BOTANIC OIL SPRAY OIL TREATMENT

A daily spray in repair/protect treatment reinforced by 4 amazing oils for hair; argan, macadamia, almond and jojoba oil. These oils are instantly absorbed to create lasting colour protection, softness, shine and frizz free hair.

- Restores hair that is stressed from exposure to the elements, heat styling and colouring.
- Ongoing applications begin to improve hair condition, reducing split ends and damaged hair.
- Super moisturising, light, non-greasy formulation, instantly shines and softens without residue.
- Absorbs quickly into the hair to smooth, condition and d.frizz all hair types.
- Reduces drying time by up to 50% therefore making styling much quicker and easier.

**SMOOTH . PROTECT . SAVE COLOUR . SHINE . REDUCE ENDS FADE
RESTORE . SOFTEN**



BOTANIC OIL SERUM INTENSE OIL TREATMENT

A daily ends repair/protect treatment reinforced by 4 amazing oils for hair; argan, macadamia, almond and jojoba oil. These oils are instantly absorbed to create lasting colour protection, softness, shine and frizz free hair.

- Restores hair that is stressed from exposure to the elements, heat styling and colouring.
- Ongoing applications begin to improve hair condition, reducing split ends and damaged hair.
- Super moisturising, light, non-greasy formulation, instantly shines and softens without residue.
- Absorbs quickly into the hair to smooth, condition and d.frizz all hair types.
- Reduces drying time by up to 50% therefore making styling much quicker and easier.

**REJUVENATE . SHINE . SMOOTH . TAME FRIZZ . MOISTURISE
SOFTEN . PROTECT**



HEAD LICE TREATMENT AND PREVENTION



KNOT KNITTY LICE GEL FAST EASY APPLICATION

A fast, safe treatment against head lice and nits (eggs). Its unique formula breaks the keratin – like glue of the nit shell from the hair shaft, killing the nit and the head lice quickly and gently after 10 minutes on dry hair. The pump and clear gel formula allows for fast and easy saturation of the hair, rinsing away easily, leaving no chemical residue. Built in water activated conditioners rebalance the pH of the hair, making it safe to retreat after 7 – 10 days of initial treatment.

EFFECTIVE . GENTLE . FAST AND EASY



KNOT KNITTY LICE SPRAY LEAVE-IN COMBING SPRAY

Formulated as a leave in conditioning spray that detangles to allow easy combing out of head lice and nits (eggs). Fragranced with spearmint essential oil to cancel out odours and give on-going protection against re-infection.

DETANGLING . LEAVE-IN . FAST AND EASY



CONTROL CURL / D.FRIZZ



2 IN 1 STYLING CREAM KAKTIS

Moisturising styling cream with a light hold helps hydrate and control frizz in dry, frizzy or wrecked hair. Anti-heat + UV + humidity + oxidation protection.

MOISTURISE . HYDRATE . CONTROL FRIZZ

SMOOTHING BALM AFTER MIDNIGHT

Humidity resistant cream tames all curly coarse unruly hair to seal, shine and d.frizz. Anti-heat + UV + humidity + oxidation protection.

TAME CURL . SHINE . CALM FRIZZ

CURLING BALM KINKY

Ultimate curl definition, control and hold that turns frizz into curl without the crunch. Can be used in wet or dry hair. Anti-heat + UV + humidity + oxidation protection.

DEFINE . D.FRIZZ . BOOST CURL

2 IN 1 CONTROL MOISTURISING SPRAY ANGEL MIST

Infused with Moroccan argan oil instantly detangles and repairs while locking in moisture protecting nutrients to defend against flyaway/frizz caused by flat irons, chemical treatments and high humidity.

Anti-heat + UV + humidity + oxidation protection.

TAME FRIZZ . HYDRATE . DEFINE CURL





STRAIGHTENING



STRAIGHTENING CREAM MIRACLE STRAIGHT

Transform frizzy, fragile hair into straight, smooth and soft hair.

Infused with natural Australian botanicals to control moisture levels and give maximum smoothness without drying out the hair.

Anti-heat + UV + humidity + oxidation protection.

D.FRIZZ . STRAIGHTEN . SMOOTH . SOFTEN



STRAIGHTENING OIL SPRAY HEAT SHIELD

Transforms frizzy coarse unruly hair into straight, smooth and soft hair.

Oil base protects during and after 200°C heat styling by locking in moisture and nutrients that help to extend colour life and strengthen resistance to breakage. Anti-heat + UV + humidity + oxidation protection.

200 ° C+ HEAT . DEFENCE . SMOOTH STRAIGHT



BOOST VOLUME



BODY BOOSTING SPRAY AMP IT UP

Boosts volume at the roots to increase body and bounce in all types of fine hair. Anti-heat + UV + humidity + oxidation protection.

ROOT LIFT . VOLUME . FULL BODY

THICKENING CREAM DOUBLE UP

Thickens fine, limp or thinning hair adding volume and body while also strengthening and protecting. Anti-heat + UV + humidity + oxidation protection.

BOOST BODY . VOLUMISE . STRENGTHEN

STYLING FOAM XAGERATE MOUSSE

Increases body and bounce for fuller looking hair with thickening control. Contains light vitamins to enhance condition and shine.

THICKEN . SHINE . BOOST VOLUME





CONTROL TEXTURE



MATT STYLING POWDER DUST UP

A matt powder that gives hair the ultimate windswept look. This non tacky, oil-free powder gives weightless texture and volume and is great for fine hair.

TEXTURE . VOLUME

STYLING LOTION SCULPT LOTION

Creates body and bounce at the roots. Use prior to blow drying or styling to leave hair feeling natural with super body and shine.

CONTROL . SHINE . BODY AND BOUNCE

FIBRE CREAM MESSED UP

An oil free, spreadable fibrous cream which delivers control, texture and a lasting hold with a matt finish.

TEXTURE . CONTROL . MATT FINISH

BEACH TEXTURE SPRAY SEA AIR MIST

Creates volume and texture separation and control for a natural, touchable beach tousled look.

MOVEMENT . VOLUME . BEACH TEXTURE

WAX SPRAY WAKE UP

Wearable wax spray adds body, texture and shape with a matt finish. Simply spray into undone hair for a choppy, dimensional, edgy, lived in look.

TEXTURE . SHAPE . FULL THROTTLE HOLD





STRONG HOLD / SHINE

SHINE SPRAY ARGAN SHIMMER

Instantly provides a shiny, smooth, polished finish with a soft feminine look. Suitable for all hair types, leaving the hair silky smooth without weighing it down.

SMOOTH . SOFTEN . POLISHED FINISH



GLOSS AND FIX STYLER FIX N SHINE

Versatile styling and finishing spray to fix and hold. Spray into roots to boost root lift and add body and bounce. Ideal for hot roller setting. Finish without blowdrying for strong hold shine.



TEXTURE . GLOSS . MAXIMUM HOLD

FIBRE STRENGTH SUMO GRIP

Get a grip with guts. Maximum hold goops hair together with webbing fibre control that lasts all day long in wet or dry hair.

CONTROL . TEXTURE . EXTREME HOLD

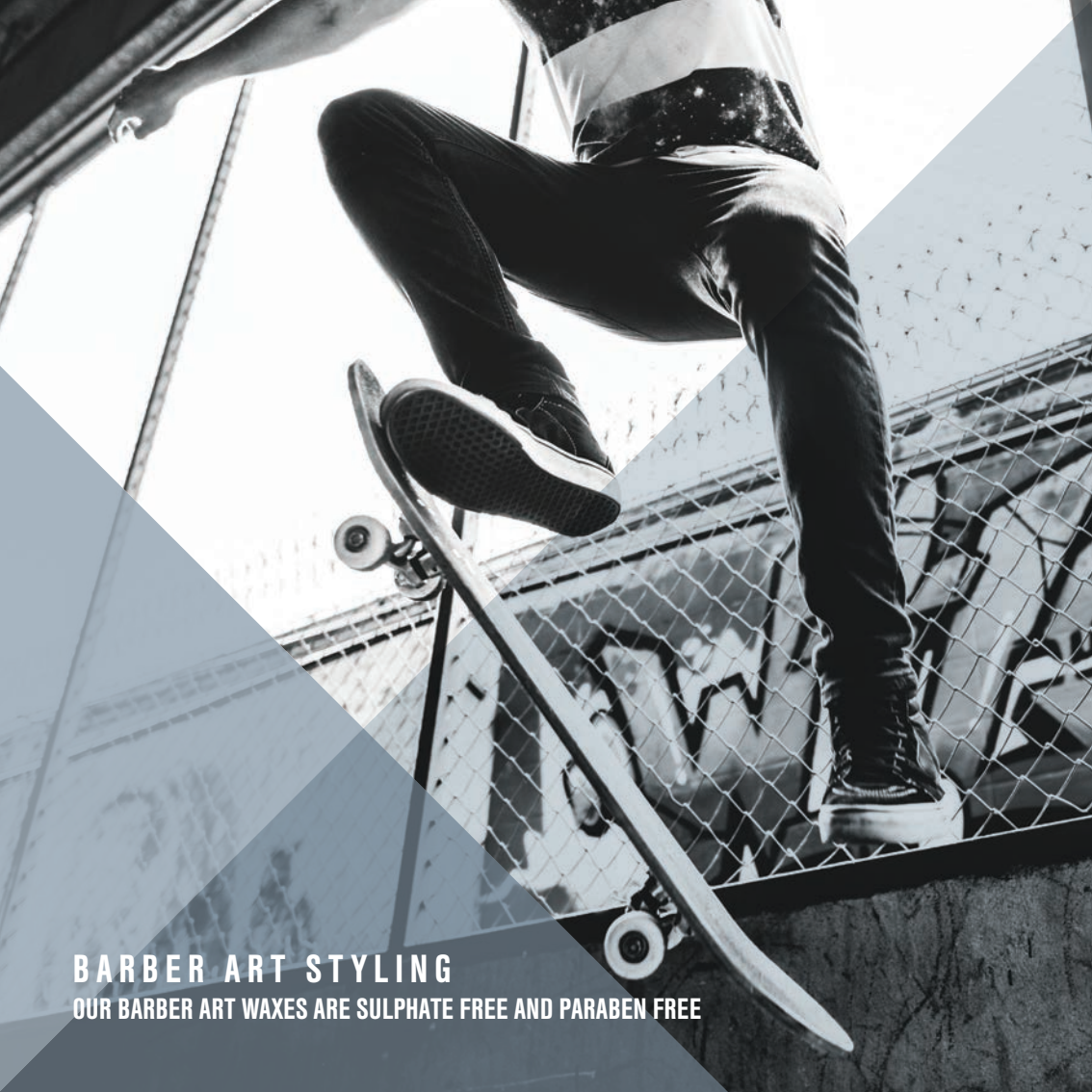


HAIR LACQUER STUCK UP

Holds any shape with maximum gravity defying control and antioxidant protection to slow colour fade but still brushes out.

STRONG HOLD . CONTROL . BRUSH OUT FORMULA





BARBER ART STYLING

OUR BARBER ART WAXES ARE SULPHATE FREE AND PARABEN FREE



CONSTRUCT STYLING CLAY

Perfect for creating massive texture with mega hold for long lasting hairstyles.

MEGA HOLD . MATT TEXTURE



FIERCE FIBRE CONTROL

Dry fibre wax with strong hold, spreadable, pliable all day control, add shape and define style.

STRONG HOLD . NATURAL TEXTURE



INTENSE ORIGINAL WAX

Shapes hair and beard for all day texture control with firm hold.

FIRM HOLD . FOR HAIR AND BEARD



EXTREME HARD MUD

Low sheen styling mud with brutal hold to last all day.

BRUTAL HOLD . LOW SHEEN



SUPREME CLASSIC SHAYPA

Shapes hair for mouldable all day control with stable hold.

STABLE HOLD . MOULDABLE



RUGGED FORMING FIBRE

Matt fibre wax with tough hold, formable all day control, add shape and define style.

TOUGH HOLD . MATT FINISH

PRESCRIPTION CHART

JUUCE SHAMPOOS AND CONDITIONERS



HAIR TYPES	BENEFITS DELIVERED	SHAMPOO AND CONDITIONER
chemically treated	moisturise / hydrate / restore	Silk Hydrate
colour treated	protect / revive / defend	Colour Life
thinning / fine	thicken / boost / increase volume	Full Volume
damaged	nourish / repair / rejuvenate	Ultra Repair
blonde	soothe / tone / reduce yellow	Ultra Blonde
frizzy / coarse / unruly	tame frizz / smooth / calm curl	Miracle D.frizz
extreme blonde	remove yellow / save blonde / intense tone	Silver Blonde
frizzy / fragile / dry	replenish / soothe / strengthen	Argan Soft

JUUCE SPECIALTY SHAMPOOS AND CONDITIONERS

HAIR TYPES	BENEFITS DELIVERED	SHAMPOO AND CONDITIONER
thinning / itchy scalp	thicken / boost / increase volume	Peppermint
oily / product build	stimulate / treat / scalp care	Deep Cleanse
flaky / itchy / scaly	balance / refresh / remove	Anti Dandruff
no water shampoo	refresh / remove oily residue	Dirty Deeds
no water conditioner	soften / condition / smooth	Silky Soft Xpress
head lice	removes and protects against lice	Knot Knitty

PRESCRIPTION CHART

JUUCE DAILY LEAVE IN MOISTURE, REPAIR AND PROTECTING TREATMENTS

HAIR TYPES AND CONDITION	DAILY SPRAY REPAIR / PROTECT	DAILY ENDS REPAIR / PROTECT
chemically treated dry	20 in One Miracle / Knot Knotty	Solar Enz
chemically treated very dry	20 in One Miracle / Knot Knotty	Solar Enz
colour treated dry	20 in One Miracle / Knot Knotty	Solar Enz
colour treated very dry	20 in One Miracle / Knot Knotty	Solar Enz
fine very dry	Instant Rehab	Solar Enz
fine extremely dry	Instant Rehab	Solar Enz
damaged very dry	Instant Rehab / Reviva Cream	Smooth Enz
damaged extremely dry	Instant Rehab / Reviva Cream	Smooth Enz
blonde very dry	20 in One Miracle / Reviva Cream	Blonde Revivenz
blonde extremely dry	Instant Rehab / Reviva Cream	Blonde Revivenz
frizzy / coarse / unruly / very dry	Botanic Oil Spray / Reviva Cream	Botanic Oil Serum
frizzy / coarse / unruly / extremely dry	Botanic Oil Spray / Reviva Cream	Botanic Oil Serum
frizzy / fragile / very dry	Botanic Oil Spray / Reviva Cream	Botanic Oil Serum
frizzy / fragile / extremely dry	Botanic Oil Spray / Reviva Cream	Botanic Oil Serum

PRESCRIPTION CHART

JUUCE INTENSE NOURISHMENT / WEEKLY REPAIR TREATMENTS / RECONSTRUCTING

HAIR TYPES AND CONDITION	INTENSE NOURISHING	WEEKLY REPAIR / RECONSTRUCT
chemically treated dry	Repair Mask	Shock Treatment / Majik Intense Lok
chemically treated very dry	Repair Mask	Shock Treatment / Majik Intense Lok
colour treated dry	Repair Mask	Shock Treatment / Majik Colour Lok
colour treated very dry	Repair Mask	Shock Treatment / Majik Colour Lok
fine very dry	Repair Mask	Shock Treatment / Majik Intense Lok
fine extremely dry	Moisture Mask	Shock Treatment / Majik Intense Lok
damaged very dry	Repair Mask	1 Minute Treatment / Majik Intense Lok
damaged extremely dry	Moisture Mask	1 Minute Treatment / Majik Intense Lok
blonde very dry	Blonde Mask	1 Minute Treatment / Majik Blonde Lok
blonde extremely dry	Blonde Mask	1 Minute Treatment / Majik Blonde Lok
frizzy / coarse / unruly / very dry	Moisture Mask	1 Minute Treatment / Majik Intense Lok
frizzy / coarse / unruly / extremely dry	Moisture Mask	1 Minute Treatment / Majik Intense Lok
frizzy / fragile / very dry	Repair Mask	1 Minute Treatment / Majik Intense Lok
frizzy / fragile / extremely dry	Moisture Mask	1 Minute Treatment / Majik Intense Lok

PRESCRIPTION CHART

JUUCE STYLING AND FINISHING CONTROL GUIDE

HAIR TYPE	FRIZZ CONTROL	STYLING / FINISHING
frizzy / fragile / curly	frizz control / moisture / texture	Kaktis
frizzy / coarse / unruly	tame / shine / calm / enhance / d.frizz	After Midnight
frizzy / curly / wavy	define / boost / d.frizz	Kinky
frizzy / fragile / curly	define / control / moisturise / tame	Angel Mist
HAIR TYPE	STRAIGHTENING CURLY/WAVY	STYLING / FINISHING
frizzy / fragile / curly	straighten / smooth / protect / hydrate	Miracle Straight
frizzy / unruly / curly	straighten / protect / shine / control	Heat Shield
HAIR TYPE	BOOST VOLUME	STYLING / FINISHING
fine / flat	body / root lift / volume	Amp It Up
thinning / fine	thicker / fuller / volume	Double Up
thinning / fine / flat	body / volume / lift	Xagerate Mousse
HAIR TYPE	TEXTURE CONTROL	STYLING / FINISHING
all hair types	thicken / texturise / boost	Dust Up
all hair types	style / sculpt / finish	Sculpt Lotion
all hair types	texturise / control / thicken	Messed Up
all hair types	beach texture / separate / layer	Sea Air Mist
all hair types	control / texturise / boost / finish	Wake Up
HAIR TYPE	STRONG HOLD OR SHINE	STYLING / FINISHING
all hair types	smooth / soften / shine	Argan Shimmer
all hair types	gloss / texture / maximum hold	Fix n Shine
all hair types	extreme hold / texture	Sumo Grip
all hair types	ultimate hold / control	Stuck Up

INGREDIENTS

Acacia Victoriae (Wattle Seed) : Contains high levels of amino acids to help repair and promote youthful hair. The powerful antioxidant properties encourage elasticity and suppleness in ageing cells.

Acetamide MEA : A water soluble conditioning agent compatible with anionic, non ionic and cationic systems, often used to increase shine.

Acetic Acid : A synthetic carboxylic acid with antibacterial and antifungal properties.

Achillea Millefolium (Yarrow) Extract : Commonly known as Yarrow extract, helps to nourish head and scalp.

Acid Violet 43 : Is a colour that may be used as a colourant in cosmetic formulations that are hair dyes, colors, and coloring rinses.

Acetylated Glyceryl Stearate/Palmitate : Is a cosmetic ingredient for skin conditioning.

Acrylamidopropyltrimonium Chloride/Acrylamide Copolymer : Is an anti-static agent.

Acrylates Copolymer : Thermal protection from heat damage.

Acrylates/C10-30 Alkyl Acrylate Crosspolymer : Is a thickener specially designed for thickening shampoos.

Acrylates/Steareth-20 Methacrylate Copolymer : A synthetic polymer that blends steareth-20 with one or more forms of methacrylic acid. Functions as a thickening agent.

Alcohol : A natural preservative derived from sugar cane.

Aloe Barbadosensis Leaf Extract : Contains proteolytic enzymes which act as a moisturiser to condition and leave your hair smooth and shiny. It promotes hair growth, prevents itching on the scalp and reduces dandruff.

Alpha-Isomethyl Ionone : Is a colorless or pale straw-colored liquid used as a fragrance.

Aluminum Starch Octenylsuccinate : As an absorbent, an anti-caking agent and a viscosity increasing agent.

Aminomethyl Propanol : An alcohol made from Nitrogen compounds that are soluble in alcohol and mixable with water. Used as an emulsifying ingredient for cosmetic creams, lotions and hairsprays.

Amidomethicone : A milky, white silicone emulsion offering excellent conditioning and softening properties.

Amly Cinnamal : A perfume ingredient whose main function is to add fragrance to a product. It has a floral scent reminiscent of jasmine.

Amly Cinnamic Aldehyde : A very mild oily-herbaceous and somewhat floral odour, reminiscent of many types of natural flowers, but mostly of Jasmin, Gardenia and Tuberosa.
Aqua : Water.

Argania Spinosa (Argan) Kernel Oil : Also known as argan oil. A nutrient-rich, nourishing and emollient oil from the thorny evergreen Moroccan ironwood tree's berry.

Basic Blue 99 : Is a direct, nonoxidative hair colorant used in temporary and semipermanent hair dyes, colours and tints.

Basic Brown 16 : Is used as a direct dye for hair colouring products without mixing with an oxidising agent.

Basic Red 76 : Is a direct dye for hair colouring products.

Basic Yellow 57 : Is used as a direct dye for hair colouring products without mixing with an oxidising agent.

Behentrimonium Chloride : Is a yellow wax like organic compound used as an antistatic agent.

Behentrimonium Methosulphate : A cationic conditioning agent utilised for its conditioning and shin properties.

Benzoic Acid : Is an anti-fungal.

Benzophenone-4 : An ultra violet (UV) absorber which helps to protect hair from sun damage.

Benzyl Alcohol : Anti-fungal and anti-bacterial agent.

Benzyl Benzoate : Is used to treat lice infestations, is absorbed by the lice and mites and destroys them by acting on their nervous system.

Benzyl Salicylate : An almost colourless liquid with a mild floral odour.

Betula Alba (Birch) Extract : Commonly referred to as Birch extract, this plant derived extract is added to assist in soothing and repairing both the scalp and hair.

Butane : Is a gas and is used as a propellant.

Butyl Ester of PMV/MA Copolymer : Used as a setting agent in hairsprays and styling lotions to promote intensive gloss.

Butylene Glycol : A colorless organic alcohol used as a conditioning agent.

Butyrospermum Parkii (Shea Butter) : Shea butter is a vegetable fat obtained from the fruit of a tree native to Africa. Shea butter is primarily composed of fatty acids such as stearic and oleic acids and used as a moisturiser.

Butylphenyl Methylpropional : Synthetic fragrance ingredient with a strong floral scent.

C9-11 Isoparaffin : Is a mixture of mineral oils derived from petroleum and is used primarily as an emollient.

C12-15 Alkyl Benzoate : Is soluble in oil and oil-like ingredients, and can impart a lightly conditioning, silky finish.

C13-14 Isoparaffin : A petroleum-derived ingredient whose wax-like texture functions as a texture enhancer.

Calcium Aluminium Borosilicate : Used as a bulking agent.

Camellia Sinensis (Green Tea) Leaf Extract : Is superior for moisturising, protecting and nourishing the skin and hair.

Caprylic/Capric Triglyceride : Is an emollient, it both quickly penetrates the surface to condition the skin/hair, and provides a lightweight and non-greasy barrier of lubrication.

Cera Alba (Beeswax) : Helps to keep an emulsion from separating into its oil and liquid components.

Ceteareth - 20 : Is a non-ionic, plant based, emulsifier utilised to adjust the viscosity or thickness of a product and to help incorporate oils into the water.

Cetearyl Alcohol : Is a mixture of fatty alcohols, consisting predominantly of cetyl and stearyl alcohols and is classified as a fatty alcohol. It is used as an emulsion stabilizer, opacifying agent, and foam boosting surfactant, as well as an aqueous and nonaqueous viscosity-increasing agent. It imparts an emollient feel to the skin and can be used in water-in-oil emulsions, oil-in-water emulsions, and anhydrous formulations. It is commonly used in hair conditioners and other hair products.

Cetrimonium Chloride : A conditioning agent providing manageability to wet and dry hair by closing the cuticle and assisting in reducing flyaway.

Cetyl Alcohol : Is a vegetable derived, fatty alcohol, utilised for is emulsifying and viscosity properties.

CI 14700 : Red pigment.

CI 14720 : Red pigment.

CI 15985 : Yellow pigment.

CI 16185 : Dark Red Pigment.

CI 17200 : Red pigment.

CI 19140 : Yellow pigment.

CI 42090 : Blue pigment utilised in conjunction with violet pigments for extra toning of blonde hair whilst reducing brassy yellow tones.

CI 45430 : Red pigment.

CI 60730 : Violet pigment.

CI 7789 : Yellow pigment.

Cinnamyl Alcohol : Is a pale yellow liquid with the odor of hyacinth.

Cinnamidopropyltrimonium Chloride : UV sunscreen, colour lock protection.

Citral : Used as a fragrance with a citrus aroma.

Citric Acid : An organic acid found in citrus fruits which acts as a neutralising agent to restore hair to optimum pH balance.

Citronellol : Used as a fragrance.

Citrus Glauca (Desert Lime) : Desert lime is an anti-humectant with high levels of glycosides for hydrating and promoting smoother, softer looking hair, also assisting with blocking out short UV rays acting as a natural sunscreen.

Cocamine Oxide : Used as a surfactant.

Cocamidopropyl Betaine : A surfactant containing both washing and conditioning properties.

Copernicia Cerifera (Carnauba) Wax : Also called Carnauba Wax, is obtained from the leaves of Brazilian tropical palm tree and is used due to its mild nature to ensure longer lasting styling and to increase moisture.

Coumarin : Fragrance from pure essential oils.

Cucurbita Pepo (Pumpkin) Seed Oil : Rich in vitamins and minerals.

Cupressus Sempervirens Leaf/Nut/Stem Oil : Is a natural oil obtained from the leaves, nuts and stems from the Cypress tree.

Cyclopentasiloxane : Is a non-volatile silicone mixture used to add shine and moisture.

Cyclomethicone : A silicone oil used to produce a non-greasy gloss.

d-Limonene : Used as a fragrance with a citrus aroma.

Dehydroacetic Acid : A fungicide and bactericide predominantly used as a preservative. It works by killing off and preventing the growth of microorganisms that contribute to a product's decay.

Diazolidinyl Urea : Is a commonly used preservative that is naturally derived.

Dimethiconol : Functions as a skin/hair conditioner, anti-foaming agent and emollient.

Disodium EDTA : Is a metal chelator, it counteracts the adverse effects of hard water by binding with heavy metal ions contained in tap water, which in turn prevents the metals from being deposited onto the hair and scalp. This makes it a particularly useful ingredient for rinse-off products that inherently require water to come into contact with the skin.

Disteardimonium Hectorite : Based on naturally occurring clay mineral hectorite; this ingredient is used as a thickening agent.

DMDM Hydantoin : Preservative for shelf life.

EDTA : Binds to metal ions to inactivate them. This helps prevent the deterioration of cosmetics. It also helps to maintain clarity, protect fragrance compounds, and prevent rancidity.

Equisetum Arvense (Horsetail) Leaf Extract : Calms and helps repair stressed hair.

Eugenol : A colorless to pale yellow oily liquid extracted from certain essential oils especially from clove oil, nutmeg, cinnamon, basil and bay leaf.

Euphorbia Cerifera (Candelilla) Cera : Helps to keep an emulsion from separating into its oil and liquid components.

Ext. Violet 2 : Violet pigment.

Gamma Methyl Ionone : Is a colorless or pale straw-colored liquid fragrance.

Geraniol : Appears as a clear to pale-yellow oil and has a rose-like scent and is commonly used in perfumes.

Ginkgo Biloba (Ginseng) Leaf Extract : Combats free radicals and repairs molecular damage.

Ginseng Extract (and) Rosemary Extract : Protective essential extract used for sensitive, dry skin and hair.

Glycerin : A natural emollient derived from palm oil.

Glyceryl Stearate : A vegetable sourced emulsifying agent which gives a rich, creamy feel to emulsion products, particularly conditioners.

Glycol Stearate : Is composed ethylene glycol and stearic acid, a naturally occurring fatty acid. Used as an emulsifier and pearling agent.

Hexyl Cinnamal : Is an ingredient used in the fragrance compounds, this is used for its scent.

Hexylene Glycol : Is a solvent and viscosity agent used to thin out heavy compositions and create a thinner, more spreadable product.

Hydrogenated Polydecene : Synthetic polymer that functions as an emollient and skin-softening agent.

Hydrolysed Silk : A naturally derived Silk which strengthens and protects the hair cortex and cuticle. Derived from Silk concentration.

Hydrolysed Soy Protein : Soy protein that has undergone hydrolysis to ensure that it has a cationic charge white guarantees its moisturising properties adhere to the hair shaft which is anionically charged.

Hydrolysed Wheat Protein (and) Wheat Starch : A naturally derived Wheat Protein which strengthens and protects hair by assisting in the prevention of moisture loss, replenishing lost protein.

Hydroxycitronellal : Is a perfume ingredient with a medium strength floral scent, reminiscent of lily and sweet tropical melon.

Hydroxyethylcellulose : Is a gelling and thickening agent derived from cellulose.

Hydroxyisohexyl-3-cyclohexene Carboxaldehyde : Used for its long-lasting, powerful scent reminiscent of Lily of the Valley.

Iodopropynyl Butylcarbamate : Is used as a preservative.

Isobutane : Is a compressed gas used as an aerosol propellant.

Isoeugenol : Is a clear to pale yellow oily liquid extracted from certain essential oils especially from clove oil and cinnamon.

Isopropyl Alcohol : Used to dissolve other ingredients during manufacture.

Isopropyl Myristate : Surfactants that clean skin and hair by helping water to mix with oil and dirt so that they can be rinsed away.

Kaolin : Is a clay mineral.

Keratin : Natural, fibrous protein that functions to promote strength and elasticity.

Lanolin Wax : Is an anhydrous wax that is obtained from wool. It boosts hold whilst ensuring that the hair shaft is protected from the environment.

Laureth - 7 : Used as an emulsifier and surfactant.

Lavandula Angustifolia (Lavender) Oil : Has a calming effect on the nerves releasing emotional tension and stress. It is also believed that application of lavender oil on regular basis has an effect on the growth of hair.

Lilial : Fragrance compound found naturally in the essential oil of chamomile.

Limonene : Takes its name from the lemon and used as a fragrance.

Linalool : Used as a chemical intermediate and one common downstream product of linalool is vitamin E.

Lyral : Is an ingredient used in the fragrance compounds.

Macadamia Integrifolia Seed Oil : A very rich oil made from the macadamia nut and contains many natural lipids. Repairs brittle and extremely damaged hair.

Magnesium Aluminium Silicate : A naturally occurring mineral derived from refined and purified clay.

Maris Sal : Dead Sea Salt.

Magnesium Sulfate : Non-reactive solid used for hair conditioning and viscosity controller.

Melaleuca Alternifolia (Tea Tree) Leaf Oil : This light yellow essential oil is derived from the Tea Tree, native to Australia. This oil easily and quickly penetrates the skin, serving as an antibacterial and disinfecting agent.

Mentha Piperita (Peppermint) Oil : Helps to cool the scalp and eliminate dandruff and fight lice.

Mentha Spicata (Spearmint) Oil : Naturally anti-fungal and antibacterial making it an effective treatment for certain scalp conditions including dandruff.

Menthol : Used to alleviate common scalp problems like itching, dryness, and tightness associated with scalp conditions like psoriasis.

Menthyl Lactate : Derived from menthol, a compound that comes from peppermint oil. Menthol has a natural cooling effect which makes it useful as a topical analgesic to treat skin irritation and itching.

Methyl Gluceth - 20 : A naturally-derived emollient, noted for its safety and mildness, usually used a solubiliser.

Mica : Micas are an important group of minerals that ass a pearlescent effect to products that are imparted to the hair for shine.

Microcrystalline Wax : Is a petroleum derived wax that is used to extend style retention and to ensure a stable formulation.

Moroccan Lava Clay : Is rich in minerals like potassium, iron, silica and magnesium, and has been used for centuries for it's healing and beautifying properties.

Myrica Cerifera Fruit Wax : Excellent holding properties and when used in hair conditioners eases combing.

Octylacrylamide/Acrylates/Butylaminoethyl Methacrylate Copolymer : A hair fixative with good set retention properties. Holds hair better under all conditions of temperature and humidity. Produces intensive shine.

Oleth - 20 : Cleans hair by helping water to mix with oil and dirt so that they can be rinsed away.

Oryza Sativa (Rice) Extract : Is a rare oil soluble concentrate extracted from rice bran and rice germ. It enhances the appearance and feel of hair, by increasing hair body, suppleness and sheen.

Oryza Sativa (Rice) Seed Protein : Absorbing ingredient.

Ozokerite : Is a naturally derived flammable liquid utilised to ensure quick drying for all applicable styling polymers.

Panthenol : Also known as vitamin B5, is widely used in shampoos and conditioners to help thicken hair.

Parfum : Fragrance.

Paraffinum Liquidum : Hair conditioning agent.

PEG-7 Glyceryl Cocoate : Used for conditioning and as an emollient. It also helps products from separating into its oil and water components. Made from coconut oil and polyethylene glycol.

PEG-12 Dimethicone : Enhances the appearance and feel of hair by increasing hair body, suppleness or sheen.

PEG-20M : Increases the thickness of the aqueous (water) portion of a formulation.

PEG/PPG - 18/18 Dimethicone : Is a water soluble silicone used to impart shine and lustre to the hair shaft.

PEG-40 Hydrogenated Castor Oil : Form emulsions by reducing the surface tension of the substances to be emulsified.

PEG-90M : Helps to keep an emulsion from separating into its oil and liquid components.

PEG-100 Stearate : Cleans hair by helping water to mix with oil and dirt so that they can be rinsed away.

Persea Grattissima (Avocado) Extract : Increases moisture and improves shine and manageability.

Petrolatum : Is a petroleum based product that imparts shine and protects hair and reduces moisture loss.

Phenoxyethanol : An organic preservative that helps prevent the formation of harmful bacteria.

Phenyl Trimethicone : Is a light weight silicone that assists in thermal protection and ensures shine.

Phytantriol : Improves the texture of hair that has been damaged physically or by chemical treatment.

Phytic Acid : Is an anti-oxidant.

Polyacrylamide : Helps hair hold its style by inhibiting the hair's ability to absorb moisture.

Polyimide - 1 : Is a new styling polymer that ensure flexible hold and great style memory.

Polyethylene Glycol : An humectant which increases and maintains moisture in the skin and hair.

Polyquaternium - 4 : Is a cationic styling polymer that conditions and styles whilst assisting with thermal protection and humidity resistance.

Polyquaternium - 7 : Is a cationic (positively electrically charged) polymer utilised to impart conditioning and moisturising properties to the hair shaft.

Polyquaternium - 11 : Is a cationic styling polymer that conditions and styles whilst assisting with thermal protection and humidity resistance.

Polyquaternium - 10 : Used as an anti static agent.

Polyquaternium - 28 : Is a cationic (positively electrically charged) polymer utilised to impart conditioning and moisturising properties to the hair shaft.

Polyquaternium - 37 : They attach to the hair and provide conditioning benefits such as ease of combing, hair alignment, elasticity and shine whilst helping eliminate frizz and flyaways.

Polyquaternium - 69 : Is a cationic styling polymer that maintains curl retention in high heat and humidity conditions.

Polysorbate 20 : Oil in water emulsifier. Wetting and dispersing agent.

Potassium Cocoyl Hydrolysed Collagen : A gentle cleanser containing Hydrolysed Collagen.

PPG-1 Trideceth-6 : It is used as both an emollient and emulsifying agent.

PPG-3 Benzyl Ether Myristate : An emollient that has a silicone-like feel and adds shine.

Propane : Is a compressed gas used as an aerosol propellant.

Propylene Glycol : Moisture carrying vehicle that serves as a humectants.

Propylene Glycol Dicaprylate/ Dicaprate : An emulsifying agent to ensure a stable formulation.

Prunus Amygdalus Dulcis (Sweet Almond) Oil : Pressed from the nut kernels of the Sweet Almond tree, this fine, nearly colorless and odorless oil, is especially mild and gentle.

Prunus Armeniaca (Apricot Kernel) Oil : Apricot kernel oil contains ingredients such as essential fatty acids, linoleic acid, and oleic acid making it a wonderful moisturiser.

PVP : A resin that gives a glossy film. Emulsion stabiliser.

Quaternium-80 : Is water soluble, versatile and used as a conditioning agent and emulsifier for water-insoluble ingredients. It is a silicone emollient made from coconut oil.

Ricinus Communis (Castor) Seed Oil : Is a vegetable oil obtained from the seeds of the Ricinus Communis plant and prevents dry scalp, moisturises and eliminates dry hair.

Rosmarinus Officinalis (Rosemary) Extract : Regular use of rosemary oil helps in stimulating follicles which results in the hair growing longer and stronger. It also possesses anti-oxidant properties to fight colour fade.

Salvia Officinalis (Sage) Leaf Extract : Soothes and cools scalp.

Santalum Acuminatum (Quandong) : Quandong is super high in antioxidants, which are important for fighting free radicals. Quandong contains vitamin C which is essential for the growth of healthy cells. It also contains vitamin E which is a powerful hydrating nutrient.

Simmondsia Chinensis (Jojoba) Seed Oil : Derived from the seeds of the desert shrub, Simmondsia chinensis is used as a conditioning agent for hair.

Sodium Acrylates Copolymer : A stabiliser mostly used in styling products to set the hair, add body, and protect it from humidity.

Sodium Chloride : Common salt used and an antiseptic and astringent.

Sodium Lauroyl Methyl Isethionate : Is a water soluble, coconut derived, surfactant that also happens to be sulfate-free.

Sodium PCA : Is a naturally occurring humectant found in human skin that is a derivative of amino acids. Used as an emollient or humectant in hair conditioners and moisturisers.

Sorbitol : Is actually a sugar derivative that is used to moisturise and protect the hair and scalp.

Stearylalkonium Chloride : A conditioning agent substantive to protein, absorbed onto the hair which assisting in repair of damaged hair.

Steareth-2 : Used to reduce the interactive forces between molecules of other liquids so that an emulsion is formed.

Stearic Acid : Is a non-ionic emulsifier used to adjust the viscosity or thickness of a product and to help incorporate oils into water.

Stearyl Alcohol : Used as an emollient in skin and haircare products. Gives a smooth, soft feeling to the hair shaft by helping the cuticle to lie flat on the surface of the hair.

Tapioca Starch : Is a known thickener and viscosity enhancer.

Taraxacum Officinale (Dandelion) Extract : Loaded with minerals and vitamins, especially vitamin A, that help balance sebum as well as treating dandruff and dry hair issues.

Terminalia Ferdinandiana (Kakadu Plum) Extract : Kakadu plum is Australia's super natural ingredient performer with exceptional antioxidant composition. It is believed that Kakadu plum could provide the most powerful natural anti colour fade treatment.

Tetrasodium EDTA : A chelating agent (meaning- chemicals that combine with metal ions and remove them from their sphere of action, also called sequestrates.

Tilia Cordata (Linden) Flower Extract : AKA Linden Flower Extract, ensure deep penetration to the hair and scalp to stimulate the blood flow and fortify the hair fibres.

Tin Oxide : Is an inorganic oxide that is naturally found in mineral form.

Titanium Dioxide : Is a UV filter to ensure protection from the sun whilst ensuring maximum colour retention.

Tocopheryl Acetate (Vitamin E) : Commonly known as Vitamin E, it is best known for its wonderful anti-oxidant properties.

Trideceth-3 : Is an emulsifier used to adjust the viscosity or thickness of a product and to help incorporate oils into water.

Trideceth-6 : Is an emulsifier used to adjust the viscosity or thickness of a product and to help incorporate oils into water.

Trideceth-12 : Derived from vegetable oils and is used as a surfactant, and is known to prevent the build-up of silicones, or counteract other products that build up in hair.

Trideceth-15 : Is an emulsifier used to adjust the viscosity or thickness of a product and to help incorporate oils into water.

Trideceth-9 PG Amodimethicone : A conditioning agent which allows ease of combing in wet and dry state of the hair.

Triethanolamine : Used in combination with fatty acids as an emulsifier for lotions. Also used to adjust the pH of products.

Trimethylsiloxysilicate : Used as an anti-foaming agent.

Trisiloxane : Used to smooth, soften, and shine the hair cuticle, protect from UV, humidity, and heat styling and can temporarily repair damaged locks.

Urtica Dioica (Nettle) Extract : Is used for its soothing, moisturising and anti dandruff properties.

VA/Butyl Maleate/Isobornyl Acrylate Copolymer : Dries to form a thin coating on the skin, hair or nails.

VP/VA Copolymer : A commonly used styling polymer that imparts shine and long lasting hairstyles.

VP/Dimethylaminoethylmethacrylate Copolymer : Provides superior holding power even in high humidity environments.

VP/DMAPA Acrylates Copolymer : A polymer used for styling and humidity control.

Zinc Omadine : Is a highly active, broad-spectrum antimicrobial agent and one of the most effective anti-dandruff agents.



if bees go, we go too!

AUSTRALIA

Lot 3 / 457 Tufnell Rd (P.O. Box 390) Banyo QLD 4014
ph. +61 7 3850 6200 fax. +61 7 3850 6299 email. cs@hairjamm.com

PROUDLY AUSTRALIAN OWNED AND MADE



juucehair.com

juuce
FOR THIRSTY HAIR