



Empower Your Connections

Today, our increasingly dynamic and mobile workforce needs more than just email and a calendar on their desktop or smartphone. Whether in, or away from the office, the ability to analyse data from multiple business systems is crucial for smart, on-the-go decision making.

With X-Info WebConnect, from Mipela GeoSolutions, you can quickly and conveniently navigate company databases that were designed for the desktop, on a screen the size of your phone or tablet.

X-Info WebConnect was built from the ground up to adapt its interface to modern desktop or touch based mobile devices, regardless of operating system or browser. It is an innovative and responsive, cloud hosted product that allows users to easily interact with critical business information.

X-Info WebConnect empowers your connections and puts the pulse of your business in the palm of your hand.



Simplify the access to your data

Using X-Info WebConnect is simple. The interface is intuitive and adapts to the device on which it is being used. With just a few taps or mouse clicks you can easily navigate and modify your data, or report on the information and communications within your business.



Stay focused on your tasks

X-Info WebConnect's innovative, role-centric user interface tailors itself to reveal only the tasks and data appropriate for each user. Roles control how each type of user interacts with X-Info WebConnect. They simplify the interface and define how users search for information and what data can be viewed or edited.



Use your preferred device

Designed to operate on desktop and mobile devices, X-Info WebConnect optimises the presentation of data to suit the display on which it is being used. Whether you're in or out of the office, navigating complex business data is easy and natural, even on a small screen.



Open up your information channels

Ensure the right information is available to the right people. X-Info WebConnect lets you open up and precisely control the pathways to your business data.



Host your data in the cloud

Take your connections beyond the confines of your office network. X-Info WebConnect gives users the freedom to access critical business knowledge wherever an Internet connection is available.

Empower your connections and strengthen your business relationships with X-Info WebConnect, a simple, intuitive and engaging solution for connecting people with information.

The X-Info WebConnect Advantage

X-Info WebConnect provides a solution for connecting, managing and maintaining your business information and project data. It's ideally suited for any sized business across a range of industry sectors including:

- ✕ Construction
- ✕ Energy
- ✕ Environment
- ✕ Government
- ✕ Infrastructure
- ✕ Mining
- ✕ Transport
- ✕ Utilities



Simple Interface

X-Info WebConnect's clean and logical interface takes your complex business information and makes it simple to navigate even for inexperienced users.



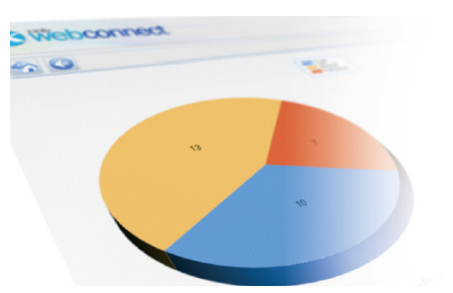
Industry Specific Data

X-Info WebConnect leverages the power of the X-Info Suite and can be tailored to use any of its data including business objects, contacts, communications, procedures and spatial data.



Rich Media Fields

Go beyond the limits of standard data fields like text, numeric, date and time. X-Info WebConnect lets you use a variety of rich media fields to define your business objects including images, documents, lists, geometry and maps.



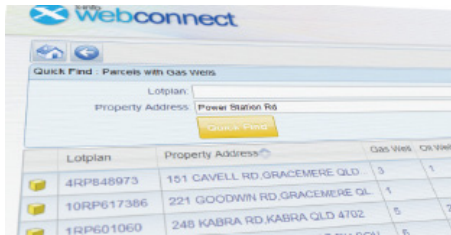
Dynamic Reports

No matter where you are, keep your finger on the pulse of your business with personalised dashboards. All your critical business activities and processes can be viewed spatially, graphically or in tabular format.



Mapping Services

Locate and navigate your business objects spatially using a variety of interactive mapping services including X-Info Maps.



Locating Information

In every business different users need to focus on their own data. Customised QuickFinds streamline decision making and simplify the task of locating data by showing only those fields that are relevant to particular user groups.



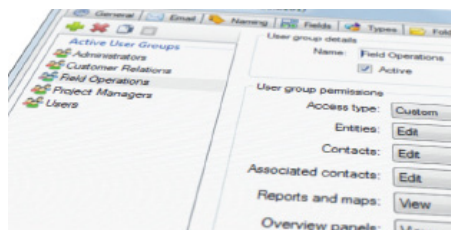
Adaptive Interface

Whether you are using a mouse and keyboard on a desktop, or swiping and tapping on your mobile, X-Info WebConnect adapts its display to make the best use of your screen size and orientation.



Advanced Customisation

X-Info WebConnect is extremely flexible and customisable. Extending and tailoring its interface for your specific needs is simple using the administration tools found in X-Info Connect.



Role Based Security

X-Info WebConnect's security features control how users interact with the system. User group security settings define each user's role, their tasks and what data they have permission to access.

"We take the time to understand your business, your processes, your data and your training needs to tailor a solution that's perfectly suited to the way you work."



www.youtube.com/user/MipelaGeoSolutions

X-Info Suite solutions from Mipela GeoSolutions



X-Info products from Mipela GeoSolutions



Who is Mipela?

Mipela GeoSolutions is an Australian owned information management company that has been connecting people with information since 1997.

With a major focus in the energy and infrastructure sectors, our aim is to provide our clients with software products and GIS services that will improve efficiency, enhance decision making and more importantly deliver accurate and profitable outcomes.

Contact Mipela GeoSolutions today to find out how we can help your business to Connect and Collaborate with X-Info Connect.

Mipela GeoSolutions
GPO Box 1152
Brisbane QLD 4001 Australia

T: 1300 807 770
F: 07 3252 2477
E: info@mipela.com.au
W: mipela.com.au

