



GROUNDBREAKER
48V - ULTIMATE OFF-ROAD

H.T.A.F
HIGH TECH ALUMINIUM FRAME

ALL THE ROADS LEAD TO ROAM

ALL NEW
GROUNDBREAKER 48v - ELECTRIC SERIES



**CAREFULLY CURATED OPTIONS LET YOU MAKE YOUR
GROUNDBREAKER A PERFECT FIT FOR THE WAY
YOU LIVE AND LOVE TO TRAVEL**



QUALITY * SAFETY * SECURITY

AHEAD AND BEYOND

Seeing the future isn't nearly as important as predicting yours - especially the part that's just seconds ahead with intelligent Groundbreaker



**The PREMIUM PACK AGE enhances the
Groundbreaker in every season**



Roaming the world or rolling up to the red carpet, no other caravan feels so at home in such a range of scenarios. The Groundbreaker is more than an icon of adventure. It's a legend you can live for yourself.



The Future of Sophisticated Luxury and off-grid camping



Internally

Groundbreaker offers numerous Excellent Features that are standard across all size range.

With its quality features, distinctive finish and tough body Groundbreaker sets ground-breaking new standards in affordable off-road & electric vans.

Sleek, stylish and revolutionary, the interior of Groundbreaker contains luxury leather lounge, premium headrests , premium quality metal sided and softclosing drawers, premium spring assisted lift up stays on the upper cabinets.

If we talk about premium products lets not forget the solid surface acrylic bench-tops.

Legend Caravans holds one of Australia's best value for money caravan packages

Electrical

Groundbreaker is equipped with 48v System and masive battery power of 15kwh the management system - ECOFLOW - contains of tripple connection of Solar and alternator that can take up to 4800w of power for charging.

When off-grid this caravan is powered up by 3600w constant power Inverter and 7200w on peak.

When camping the batteries are charged with at least 1400w of Mono Crystal Solar panels. This van has lots of LED lights internally and externally, large front and back spotlights , Amber Awning lights , Electric Step and Electric Awning, Electric Jack on A-Frame.

When cooking you can cook with confidence on internally fitted double induction cooktop and external Premium Electric Outdoor kitchen with Electric BBQ

GROUNDBREAKER 48V ULTIMATE - LUXURY SERIES SPECIFICATIONS



CHASSIS FIT-OUT

- » CruiseMaster ATX Premium
- » 12" Ventilated Disc Brakes
- » Disc Brake Hydraulic Actuator
- » Wireless Air-Bags Level 3
- » Legend Truss Chassis
- » 6" Heavy Duty A-FRAME
- » A-Frame Extension
- » 265/75/16 MT
- » Wheels Theory 16"
- » Hot Dipped Galvanised Chassis
- » 4 Arm Legend B/Bar
- » Jerry Can Holders
- » Legend WoodBox on Rear Bar
- » 1 Spare Wheel on Rear Bar
- » Do45 Off-Road Coupling
- » One Piece Honeycomb Floor
- » X-Large Toolbox with Slides
- » Underslung Coupling
- » 4.5t Rated Chains
- » Jacking Points
- » Recovery Points
- » Skid Plates

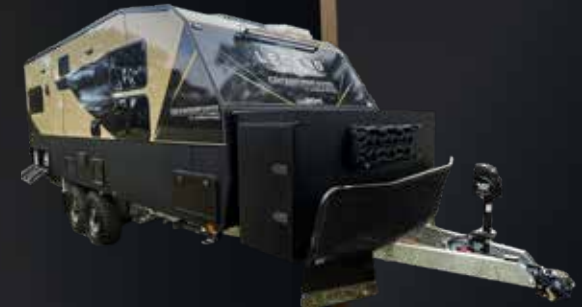
EXTERNAL FIT-OUT

- » Aluminium Frame construction
- » Aluminium Composite Walls
- » Checker or Dimple Plate
- » Checker or Dimple Front/Back
- » One Piece Aluminium Roof
- » One Piece Honeycomb Floor
- » Security Main Door Entry
- » AeroDynamic Front
- » Large Skylight with LED
- » Insulated Walls and Roof
- » Double Insulation on Roof
- » Lockable Access Hatches
- » Caravan Mudflaps
- » Stone Guard Protection
- » Dropdown Caravan Jacks
- » Double Dropdown Picnic Table
- » Electric Awning with LED
- » Full Underbody Armour
- » Caravan Dust Reduction Unit
- » Entertainment TV Locker



INTERNAL FIT-OUT

- » Luxury 100% Leather Lounge
- » Club, Cafe or L Shape Lounge
- » Premium Head Rests on Lounge
- » Premium Leather Pelmets
- » Premium Roman Blinds
- » Telescopic + Turn Table leg
- » Solid Surface Water & Heat Resistant Benchtops
- » Lift-Up Bedframe on Struts
- » Innerspring Pillow Top Mattress
- » Acrylic Splash Back
- » Heavy Duty Vinyl Floor
- » Fire Extinguisher
- » Premium Metal Drawer System
- » Soft Close Locable Drawers
- » Premium Assisted Upper Cabinets
- » Premium Soft Close Hinges
- » Push Handles with Locks
- » Recessed Square Sink



PLUMBING FIT-OUT

- » Electric Hot Water System
- » External Shower Hot Cold
- » Legend Water Saver System
- » Wall Mount Washing Machine
- » Dual Induction Cooktop
- » Convection Micro-Oven
- » Ceramic Bowl Cassette Toilet
- » Flick Mixer Taps Throughout
- » Large 224ltr - 2 Door Fridge
- » 2 x 95ltr Fresh Water Tanks
- » 1 x 110ltr Grey Water Tank
- » 3 Way Water Filter Tap
- » Diesel Heating System
- » Towel Rails in Ensuite
- » PVC Waste Pipes Throughout
- » Brass Fittings on Cold and Hot water & Water Tanks
- » Brass Quick fill Water Tanks
- » Electric Outdoor Kitchen

ELECTRICAL FIT-OUT

- » Fusion Colour Stereo with Fusion Soundbar Speakers
- » Double Power Points
- » Awning Amber/White Lights
- » Off-Side Amber/White Lights
- » Front and Rear Spot-Lights
- » Smart TV
- » Reverse Cycle Air-Con
- » Reversing Camera Pack
- » USB Points Throughout
- » LED Strip Lights
- » Smart Control Lights
- » 48v ECOFLOW Ultimate BMS
- » 3600w Premium Inverter
- » 15kwh Lithium 48v Battery
- » 1400w Solar Power
- » Electric Awning with LED
- » Double Electric Step
- » Caravan Rv Wi-Fi System



LEGENDCARAVANS.COM.AU

2 FLOREY COURT SOMERTON VIC 306



CONFIGURE YOUR GROUNDBREAKER 48v ULTIMATE



AL-KO ESC



DEXTER SWAY CONTROL



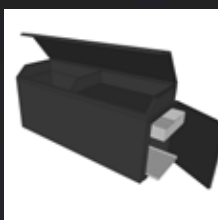
HYDRAULIC DROP-DOWN LEGS



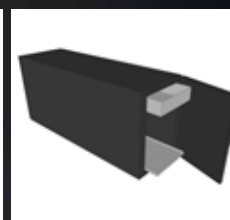
3 or 4 - ARM B/BAR



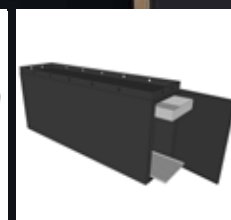
WOOD BOX ON REAR BAR



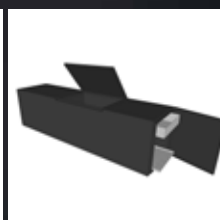
TOOL BOX - OPTION 1



TOOL BOX - OPTION 2



TOOL BOX - OPTION 3



TOOL BOX - OPTION 4



DUAL CAMERA



Premium Outdoor Kitchen



CERAMIC COATING



WALL MOUNT WASHER



MAX X FAN HATCH 12v



GAS HEATER-TRUMA



ELECTRIC BBQ



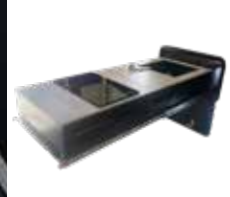
BIKE RACK ON TOOL-BOX



DOUBLE STACK WINDOWS



12v FRIDGE



OUTDOOR KITCHEN ELECTRIC



OUTDOOR KITCHEN GAS



START UP PACK



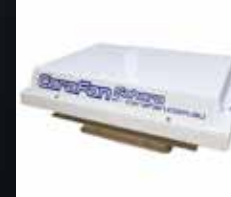
DIESEL HWS + HEATER



SAT KING AUTO SAT



DOMETIC D.R.S



CARAFAN - SAHARA



FUSION STEREO



COMPOSTING TOILET



12v FANS



TABLE LEG



WATER SAVER SYSTEM



ENDLESS H.W.S



BED CONVERSION



COFFEE MACHINE



ELECTRIC JACK

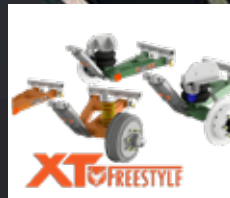


BOS JACKS



CRUISEMASTER

- * ATX COIL
- * ATX AIR
- * ATX DISC



CRUISEMASTER

- * XT COIL
- * XT AIR
- * XT DISC



AIRBAG CONTROLS

- * MANUAL LEVEL
- * WIRELESS REMOTE
- * AUTO LEVEL



CRUISEMASTER

- * D045 Coupling
- * D045 PIN



DISC BRAKES



HOT DIPPED CHASSIS



RECOVERY POINTS



SKID PLATES



UNDERBODY ARMOUR

For More options please give us a call or visit our website
www.legendcaravans.com.au

Discover our best Technology, Building Materials and quality products



Plumbing and Brass Fittings

Legend Caravans has fully qualified Plumbers. We have the experts that you can be confident that every aspect of the plumbing inside your caravan is operating efficiently and effectively.

Legend Caravans uses latest technology and Brass fittings to all its plumbing. We are first manufacturer in the industry to include Brass fittings to the caravan Hot and Cold water.

Gas and Water Fittings

Legend Caravans plumbers have over 60 years of experience in caravan industry. All our caravans that are fitted with gas are tested and provided with gas certificate.

Our Plumbing team is all about finding and providing solutions to all of your caravan plumbing needs. When caravans are fitted with outdoor cooking we provide hot and cold water connection for easy access.



Solid Surface - Premium Acrylic Benchtops

HYGIENIC & NON-POROUS

Does not support growth of mould, mildew or bacteria and is stainresistant. Meganite is safe for food preparation and is certified by NSF. Suitable for spaces where hygiene is essential.

INCONSPICUOUS SEAM

Seamless surface joints with no crevices to trap bacteria and dirt.

High Performance 100% Acrylic Solid Surface

EASY MAINTENANCE

Easy to clean and does not require sealing or special products for maintenance.

THERMAFORMABLE & VERSATILE

Can be thermoformed, moulded, routed and shaped to accommodate both vertical and horizontal applications.



Slim Drawer Sides

The customisable design of our Legend Drawer Systems supports the latest living trends and opens up a wide range of design possibilities. The side panels are straight both on the inside and outside and are impressively slim at just 12.8 mm. This means they can be integrated harmoniously into any furniture and will give you more usable space.

Fine engineering

Legend Caravans Drawer system leads the way in terms of technology. Fitted with the SPECIAL cabinet profile, boasts low opening forces, a synchronised feather-light glide and gives you the flexibility to implement three different motion technologies. The soft-close function adapts to the motion technology employed.



Hinge System

All of our Legend Hinges are Integrated with soft close innovative technology at its best. Effective and integral to delivering soft and effortless closing to cabinet doors. Have 3 dimensional adjustment. Precise side height and depth adjustment produces the perfect gap layout in all living areas.

Hinge and Lift Up Stays

Legend Caravans combines easy opening with integrated Legend lift up stay system, making opening and closing furniture a mesmerising experience. To implement handle-less upper cabinets, we simply equipped the premium lift system. Adjustable to any size door, when adjusted to the weight it will stay exactly where you want it and it will always be within reach of closing.

2 - Years Manufacturing Warranty **5 - Years structural** Terms and conditions apply

ELECTRICAL SYSTEMS AVAILABLE

Discover our best optional Electrical equipment for the Groundbreaker

LEGEND CARAVANS INDUSTRY LEADERS IN ELECTRICAL SYSTEMS

KEY BENEFITS



SIMPLE SET-UP

Once set up, you can plug & play with EcoFlow LFP batteries, solar panels, and tons of add-ons to match your exact needs, all the while having far fewer components and wiring.

SAVE SPACE

The Power Hub combines two MPPT solar charge controllers, one battery charger with MPPT, one DC-DC step-down converter, and an inverter-charger. That's far less components and wiring required.

SMART CONTROL + MOB

Use the EcoFlow Power Kit console to have a complete overview of your power consumption.

Have wireless control of your system from a distance using the EcoFlow App.



VICTRON 12v , 24v and 48v SYSTEMS

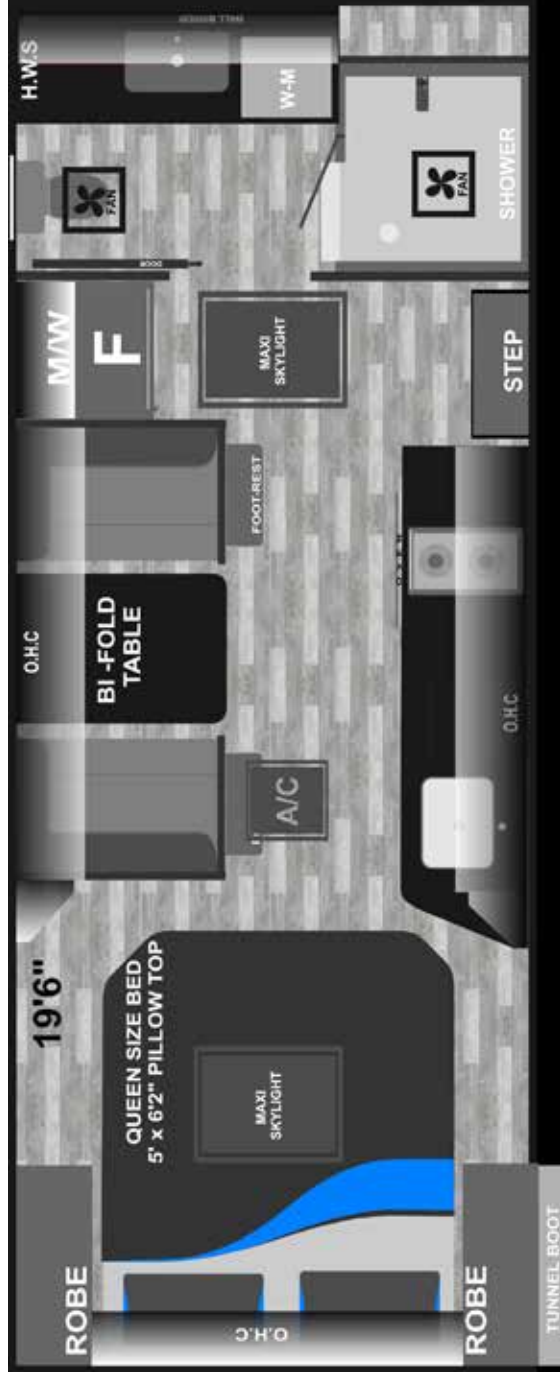


ENERDRIVE PACK - 1, 2 & 3

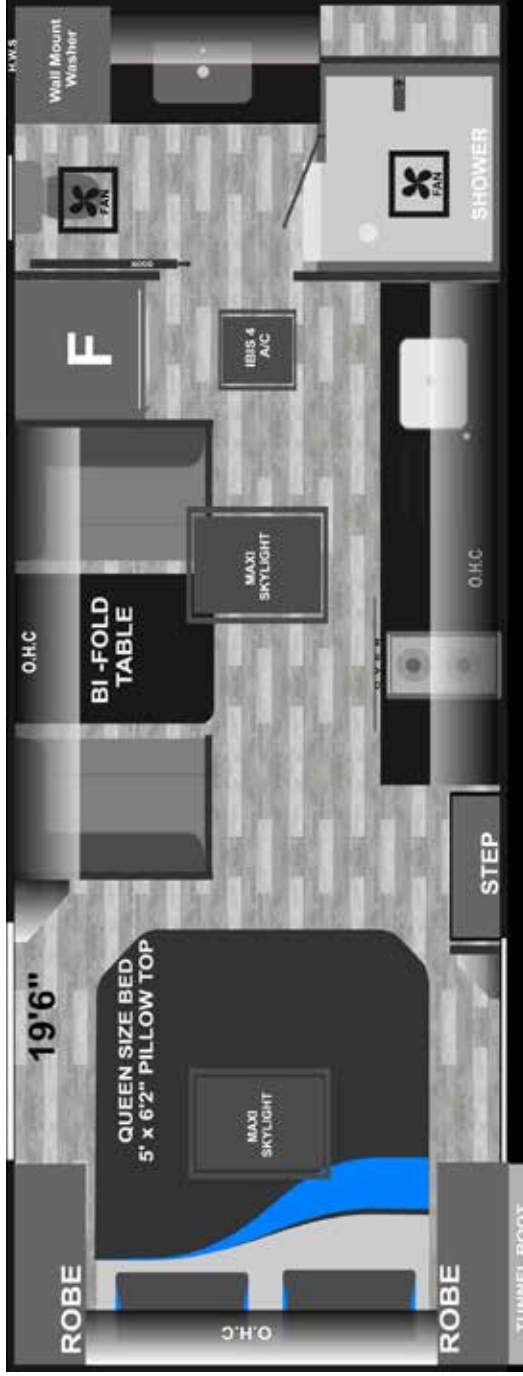


REDARC SYSTEMS

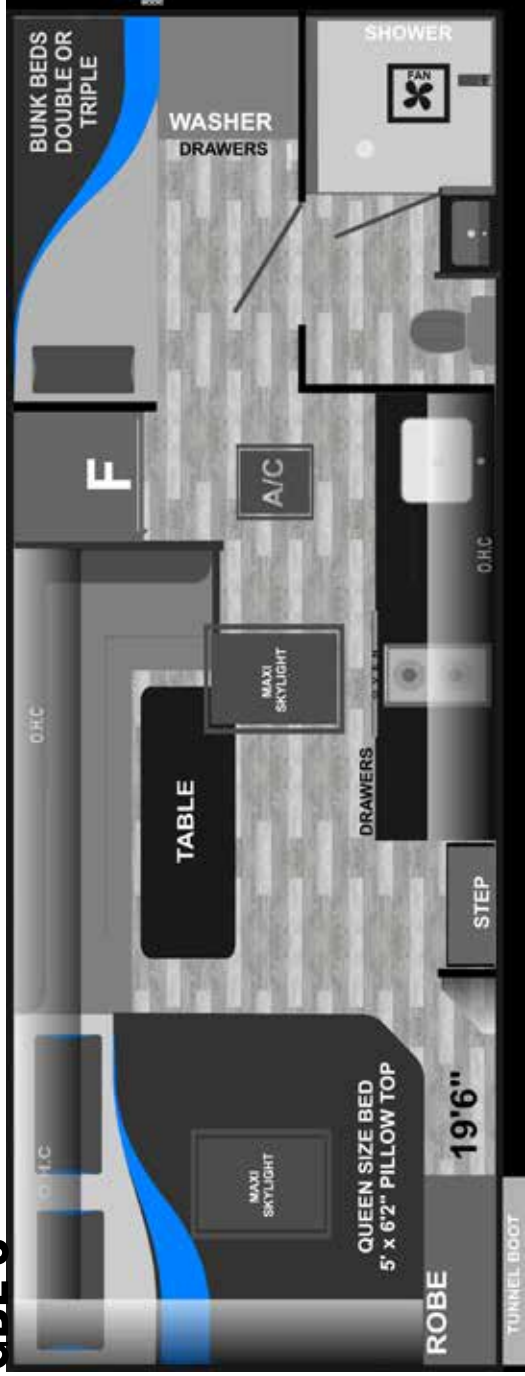
GBE-1



GBE-2

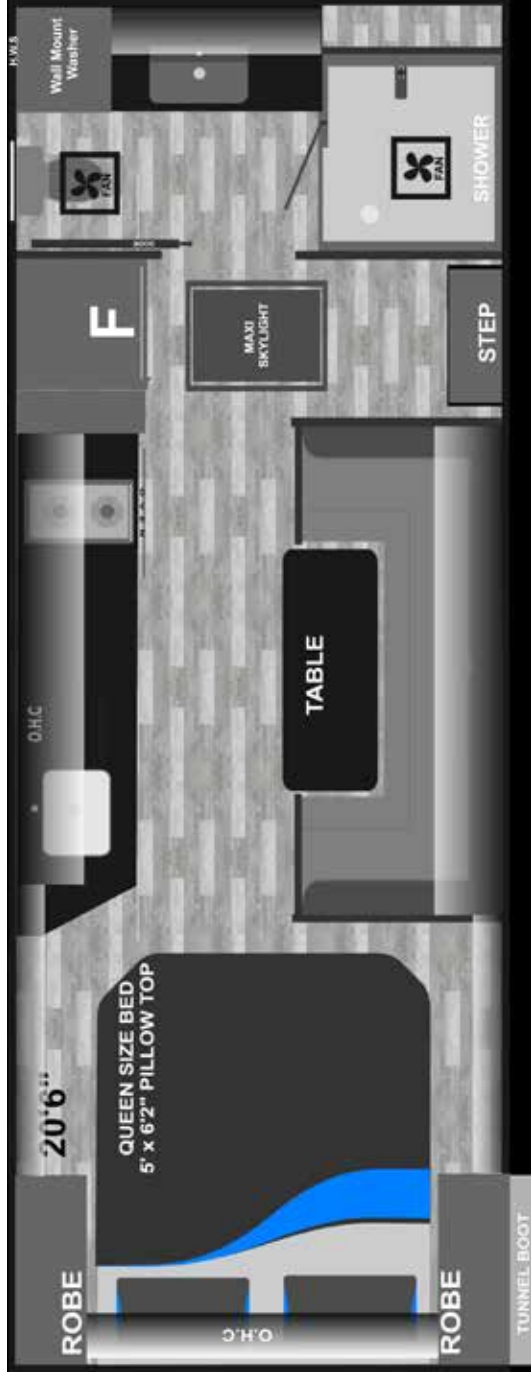


GBE-3

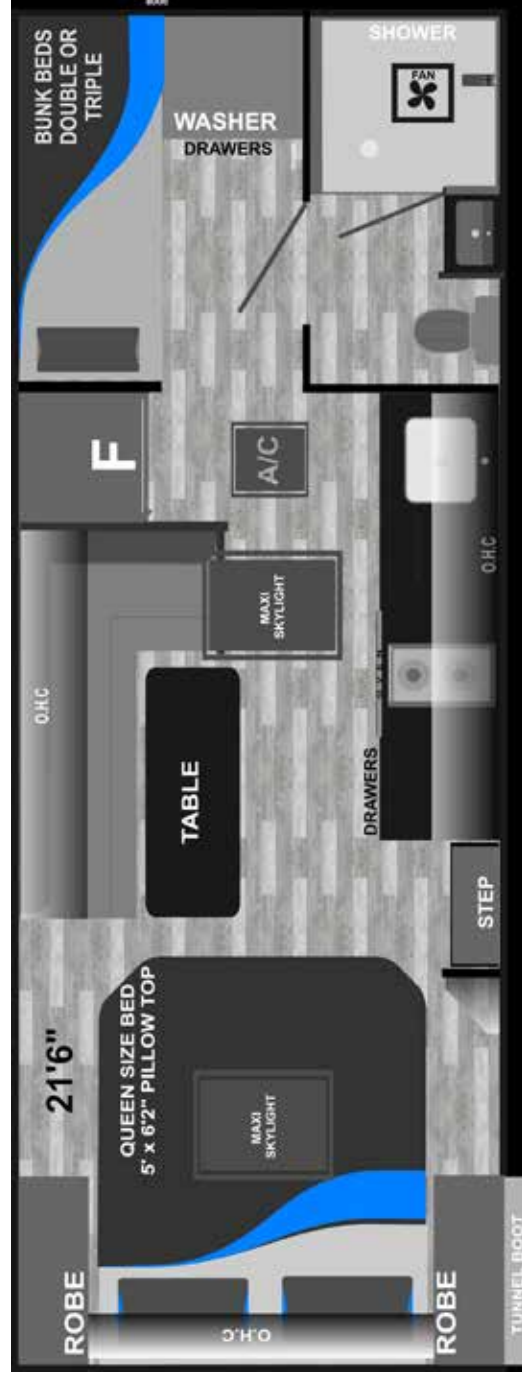


Specifications may be subject to change without notice at the discretion of Legend Caravans. Floor-plans and imagery are for illustrative purposes only. Actual caravans may differ.

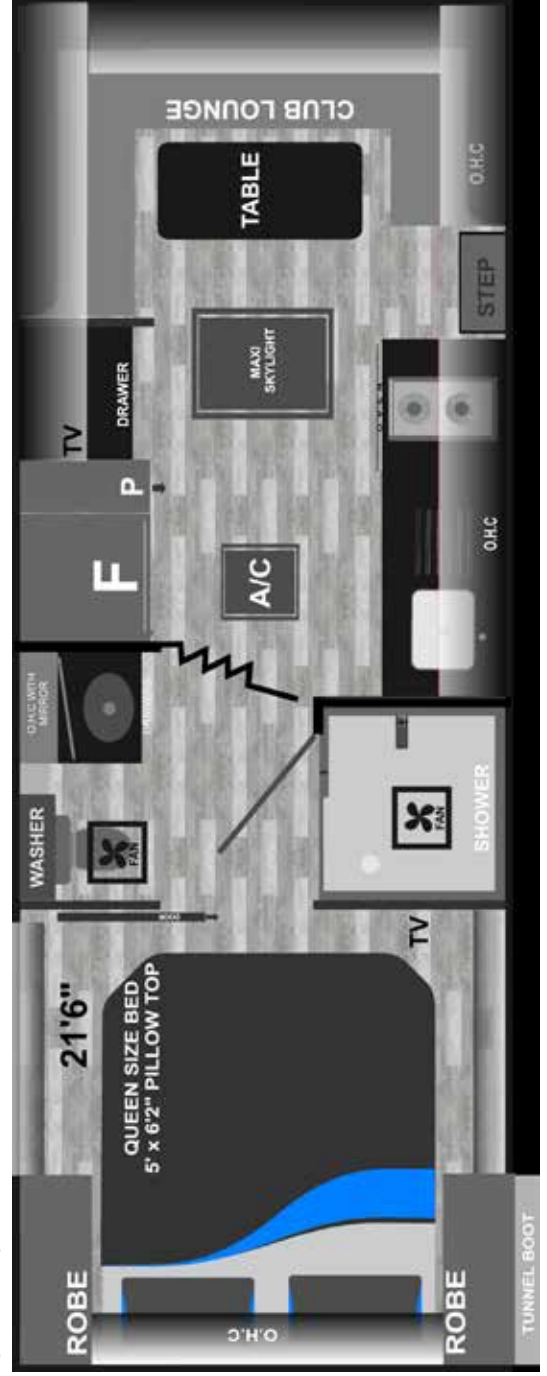
GBE-4



GBE-5



GBE-6



Specifications may be subject to change without notice at the discretion of Legend Caravans. Floor-plans and imagery are for illustrative purposes only. Actual caravans may differ.

[illegible]

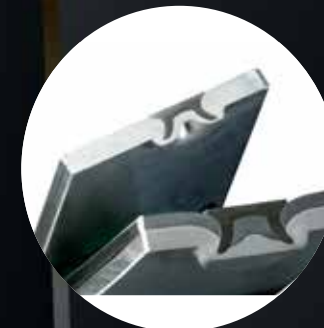
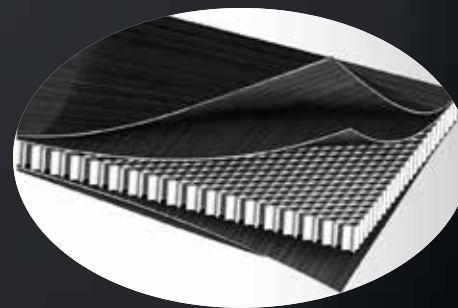
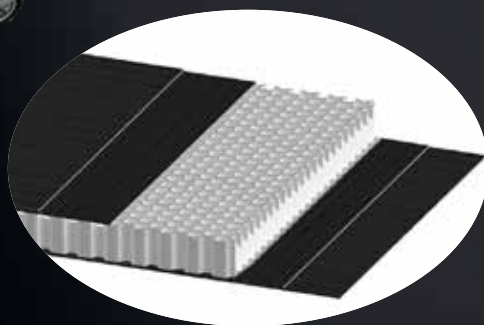
A detailed floor plan diagram of a dorm room layout. The room is rectangular, with a 'WARDROBE' at the top. The layout includes a 'QUEEN SIZE BED 5' x 6'2" PILLOW TOP' with a 'MAXI SKYLIGHT' on the left wall. A 'BI-FOLD TABLE' is positioned against the left wall, with an 'OHC' (Overhead Cabinet) above it. A 'SHOWER' is located on the right wall, with a 'STEP' leading into it. A 'WALL MOUNT WASHER' is on the right wall. A 'FAN' is mounted on the right wall. A 'MAXI SKYLIGHT' is on the right wall. A 'F' (Furniture) is on the right wall. A 'WOOD' floor is indicated. A '23'' dimension is shown on the right wall. A 'TAMMIE ROOT' logo is in the bottom right corner.

[illegible]

Specifications may be subject to change without notice at the discretion of Legend Caravans. Floor-plans and imagery are for illustrative purposes only. Actual caravans may differ.

ALUMINIUM FRAME - ELECTRICAL AND INSULATION

» One Piece Fiberglass, Insulated - Water and Hail Resistant Roof



KEY FEATURES & STANDARD ACROSS ALL MODEL RANGE

- AUSTRALIAN MADE PREMIUM CARAVANS
- AUSTRALIAN MADE PREMIUM CHASSIS
- ONE PIECE HONEYCOMB FLOORS
- ONE PIECE WATER & ROT RESISTANT ROOF

- ALUMINUM FRAME WALLS
- HIGH TECH ALUMINIUM FRAME
- MACHINE RIVETED SPR - SYSTEM
- LOCK BOLT PINTAL - SYSTEM

- SOLID ACRYLIC BENCHTOPS
- ACRYLIC SPLASH-BACKS
- FIRE RATED NON-TOXIC INSULATION
- PVC INTERNAL WALLS WATER AND ROT RESISTANT

2 - Years Manufacturing Warranty 5 - Years structural Terms and conditions apply

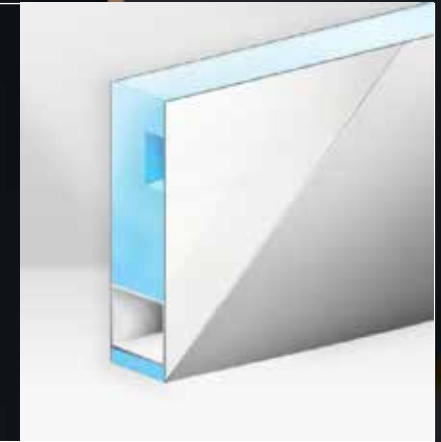
The Real Benefits of having One Piece Fiberglass Roof on your caravan

The complete structural insulated panels deliver significant benefits.

- » Exceptional Strength
- » High performance skins and cores for optimal panel performance
- » Reduced need for frames
- » Excellent impact resistance to minimise damage and maintain appearance
- » Premium Insulation
- » Thermal (heat)
- » Acoustic (sound)
- » Superior energy efficiency
- » Advanced Water and Moisture Resistance
- » Rot proof skins and core



- » One piece panels
- » Reduced potential for water ingress
- » Enhanced Weather Resistance
- » Reduced fade effect of UV light
- » Hail resistant
- » Chemical Resistance
- » Minimal impact from salt and other corrosives
- » Scratch Resistance



BENEFITS OF HENROB SELF-PIERCING RIVETS (SPR)

- » *Static joint strength*
- » *Dynamic joint strength (fatigue strength)*
- » *Robustness and durability*
- » *Parent material type, grade and property variations*
- » *Corrosion resistance*
- » *Avoidance of rivet breakthrough on bottom sheet of joint*
- » *Stress/Vibration Free*
- » *Head flushness*



Self-piercing rivets also eliminate heat problems associated with spot welding pure aluminum and aluminum alloys, which melt below 800 C. And, the fasteners are compatible with galvanized and coated surfaces, minimizing damage and eliminating recoating or replating, unlike spot welding.

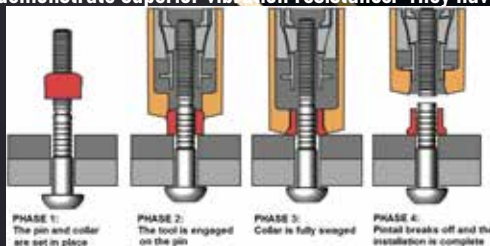
BENEFITS OF LEGEND CARAVANS REFLECTIVE FILM INSULATION

- » The latest in thermo reflective insulation technology with the most advanced fire performance characteristics, achieving a Group 2 classification to NCC fire ratings for wall and ceiling linings.
- » Keeping the heat out of your caravan during summer, and keeping it in during winter.
- » The recouping of caravan insulation costs in the savings generated from not using air conditioners and heaters.
- » A lessening of your environmental impact once you stop running your appliances as much.
- » Soundproofing by adding layers of insulation to your caravan
- » The safety that results from our insulation being totally non-toxic. They can be when handled, installed and used with great peace of mind.



LOCKBOLT - OUR SPECIAL BOLTING SYSTEM

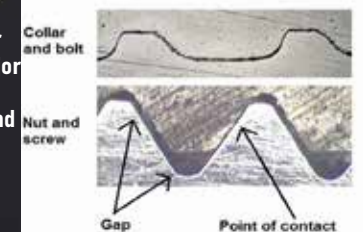
A lockbolt provides approximately 100% bearing area in the locking grooves. Using a nut and screw there is only 30% - 35% contact and the applications is vibration sensitive. When it comes to the self-loosening effect under vibration load we are all aware of the Junker test, which monitors a bolted joint as it loses its preload when subjected to shear loading caused by transverse vibration. Compared to conventional bolts and nuts, lockbolts demonstrate superior vibration resistance. They have no relative movement in the thread bearing area. There is also no need for washers when using a lockbolt. Predominately in civil engineering



a conventional bolt needs washers on both sides to protect the surface from damage caused by the rotation of the nut when torqued. With a Huck lockbolt there is no need for a washer, as a lockbolt is simply an axial installation. In addition, when users install conventional bolts on sloped surfaces they need a sloped washer and there is a good chance there will be misalignment. Again, with a Huck lockbolt there is no need for such a washer and there is no misalignment - thanks to the Huck lockbolt's 'collar' design. Huck lockbolt technology works on a different principle to regular bolting, where instead of a threaded nut, a cylindrical 'collar' with a smooth internal bore is used. The collar is placed over a pin with locking grooves that either follow the form of annular grooves or a special form helical thread. During installation this collar is 'swaged' permanently

LOCKBOLT WITH PINTAIL INSTALLATION PROCESS

This joining process offers a number of significant advantages over regular bolting. The joint is maintenance free as once the collar is 'swaged', it will not loosen under vibration. This provides major safety when lockbolts are installed internally in the caravans also eliminates the need to re-torque bolts periodically in order to ensure joint integrity. The major safety benefit is that the joint is guaranteed to maintain clamp and not become compromised over time.



STATE OF ART FACTORY LATEST MACHINERY AND EQUIPMENT





WEBSITE: www.legendcaravans.com.au

EMAIL 1: info@legendcaravans.com.au

2 FLOREY COURT SOMERTON, MELBOURNE, 3062

PHONE: 03 9308 9550

PHONE: 03 9308 8992