



Style x Substance

An exceptional selection of ten recent projects

High Achiever

Energy efficient Window and Door solutions

Foreword

The rising popularity of feature Windows and glass Doors within home designs has taken the trend of open-plan living a step further, revolutionising how the interior and exterior work together to create a cohesive and welcoming design.

Rylock Windows and Doors transform how function and form are blended within builds to create stunning statements that maximise light and views. Over recent years, consumer awareness and demand for sustainable builds has increased dramatically, influenced by factors such as rising utility costs and a desire to reduce the environmental footprint of homes. Rylock's innovative high-performance products provide superior insulative qualities, enhancing energy efficiency, whilst creating an aesthetic in and of themselves.



Steven and Sharon Hedger
Hedger Constructions



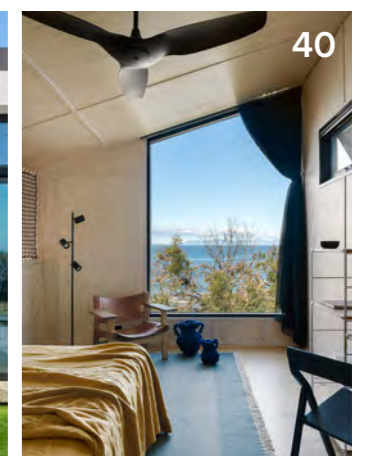
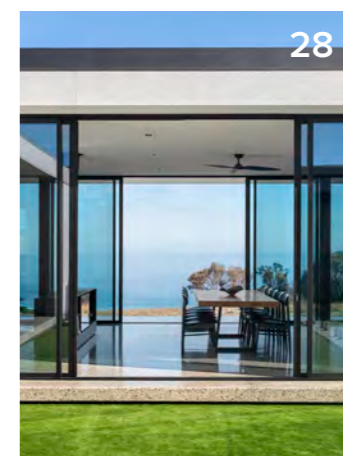
As featured on page 8



Steven and Sharon Hedger are directors of Hedger Constructions. As three-time Regional Builder of the Year and recipient of 30+ Master Builders Association of Victoria Awards, Hedger Constructions is widely recognised as one of Victoria's most prestigious building companies. Specialising in luxury custom home construction, Hedger Constructions are redefining modern living with homes that transcend the traditional.

Contents

About	2
Product Features and Services	3
Project Features	
Sanctuary	4
Thornton House	8
Knock Down Knock Out	12
Whitecliffs	16
Eclectic Style	20
Dawson Creek	24
Hawks Nest	28
Wakanui Trail House	32
Dual Jewel	36
Magic Beach House	40
Manufacturing and Associations	44



About

Rylock brings 40 years of experience to developing and crafting custom Window and Door solutions. Urban, coastal or rural: Rylock products can meet the demands of any site whilst maintaining style, performance and energy efficiency.

Rylock is a wholly Australian-owned, industry leading manufacturer that uses locally-sourced aluminium and processed glass. As an Australian business, we intimately understand the importance of designing products that consider Australia's diverse landscape and local climatic conditions. Your particular site, solar orientation and any existing requirements will be considered to achieve the best result for your home or project.

All Rylock products are designed with thermal comfort in mind, with a focus on solar control glazing and frame conductivity. In response to our commitment to energy efficiency, all Rylock Windows and Doors feature Toughened Low-e Double Glazing with Argon Fill as a standard specification.

This technology doesn't come at the expense of looks; every custom Window and Door combines performance with style for optimal comfort throughout your home. What's more, Rylock Windows and Doors maximise natural air flow and enhance your connection with the outdoors. Rylock prides itself on delivering considered design solutions that meet the evolving needs of architectural trends.

Rylock has been the recipient of Australian Design Awards and has previously received the Master Builder Association's Energy Efficiency Award for Building Materials. Rylock products are featured in numerous award-winning projects from coastal retreats, stand-alone homes to multi-residential developments.

What sets Rylock apart is the belief that every Customer and every product, requires a personalised solution. Rylock Staff are highly capable and committed professionals who will guide you through the design process to ensure an optimal, high performance, custom solution is achieved.



Dingley Manufacturing and Showroom Consultation

Product Features and Services

Rylock Staff understand the importance of reliability in both product and service with a diverse range of solutions to meet any brief.

From the time of your initial consultation, detailed quotation and expert advice; through to product delivery, specialist site glazing and site service – Rylock teams will assist you each step of the way. Our product adjustment service can also be booked at the time of handover to ensure excellence in product performance.

SAFETY



Keeping our Employees and Customers safe is our top priority. Our products are tested and compliant with *AS2047 Windows & External Glazed Doors* and *AS1288 Glass in Buildings* and we only supply Grade A safety glass.

THERMAL COMFORT



To help better regulate a home's living environment, all products feature high performance Low-e Double Glazing with Argon Fill as a standard specification.

SOLAR



Solar control via high performance clear glass featuring a coating internal to the double glazed unit, with excellent visible light transmittance - or by the use of tinted glass in a variety of hues.

BUSHFIRE



Independently tested by the CSIRO, Rylock offers certified Window and Door solutions for mandated Bushfire Attack Levels up to and including BAL40.

NOISE



Rylock offers a wide range of acoustic solutions, to help minimise intrusive noise for increased comfort in applications such as multi-residential living.

PRIVACY



A contemporary range of translucent laminated glass solutions for obscuring vision and diffusing light.

SECURITY



A range of tested screens and specialist glazings help secure the building envelope and offer peace of mind.



SANCTUARY



In the leafy Eastern suburbs of Melbourne, Victoria this double-story masterpiece, aptly named Sanctuary, delivers a unique oasis. The site has been carefully designed to work with the cross fall of the land and a beautiful mature oak tree, which is central to the home's courtyard vista.

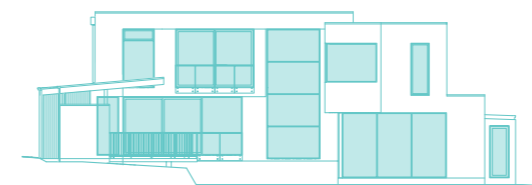
Fixed Lite Windows and Stacker Doors envelop the central courtyard throughout the entire home, on both levels. The entry, generous in proportions, is enhanced by a 6-metre high Fixed Lite Window, that floods the foyer with light and provides another vantage point to the luxurious outdoor entertaining space.

The home's front façade, with upper white volume, natural timber cladding and extensive high performance Fixed Lite Windows, are met by graphic detailing, delivered by the stunning curved feature brickwork. Upstairs, the ensuite's focal feature is the generous bathtub, positioned to view the oak tree and garden beyond, through an expansive Awning Window with an openable sash for ventilation, custom designed to sit well above the occupant's sightlines.

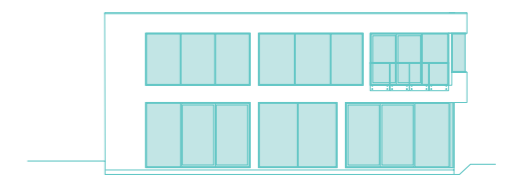
Fluid blends can be seen throughout the home's architecture, with a seamless transition from inside to out, aided by the 3-metre high Stacker Doors which feature a rebated sill, allowing occupants to transition to the courtyard with ease - whilst yielding a great sense of connection to the outdoors.

“The entry is enhanced by a 6-metre high Fixed Lite Window, that floods the foyer with light and provides another vantage point to the luxurious outdoor entertaining space.”

Frame Colour:	Textura® Black
Glazing:	Grade A Safety Toughened Low-e Double Glazing (Argon Fill)
Designer & Builder:	Latitude 37
Photographer:	Erhan Tirli



North Elevation



East Elevation

THORNTON HOUSE





On a private golf club at the foothills of the Cathedral Ranges in Victoria, Thornton House sits harmoniously in the hillside. This contemporary country home was designed as three separate pavilions, connected by Fixed Lite Window glass link-ways to the central living area. The wind speed for the site was calculated at N3 and has a Bushfire Attack Level rating of BAL29.

The building features a natural colour palette of textured stone materials and standing seam cladding. Roof trusses in the living area create a dramatic statement that leads to the soaring angled fireplace, which is flanked by Raked Fixed Lite Windows that frame the views beyond.

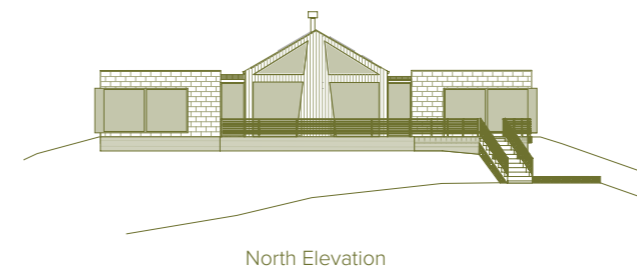
A pair of Large Stacker Doors are semi-rebated into the floor for a seamless threshold between the interior and surrounding decking, drawing the outside in. The extensive use of Double Hung Windows promotes cross-flow ventilation, to deliver maximum air flow, whilst providing clean lines with minimal visual obstruction to the surrounding hillside.

All custom made, high performance Window and Door products feature Low-e Toughened Double Glazing (Argon Fill), to help naturally regulate the temperature and keep the living environment more comfortable year-round.



“Roof trusses in the living area create a dramatic statement that leads to the soaring fireplace, which is flanked by Raked Fixed Lite Windows that frame the views beyond.”

Frame Colour:	Colorbond® Woodland Grey (Matt)
Glazing:	Grade A Safety Toughened Low-e Double Glazing (Argon Fill)
Designer:	Detail 9 Architects
Builder:	Hedger Constructions
Photographer:	Derek Swalwell



KNOCK DOWN
KNOCK OUT





Since 2016, Rylock has supplied Windows and Doors to more than 500 homes within Carter Grange's dual occupancy portfolio in Victoria. This particular project is one example of this proud partnership – a development in bayside Melbourne that combines strong lines and bold angles, to deliver a modern façade that hints at the quality materials and craftsmanship within.

Celebrating space and form, the façade comprises of full-height Double Hung, Fixed Lite and Awning Windows (in Custom Black (Matt) powder coat), with strong vertical lines and an elegant charcoal render that demands attention.

3-metre high Awning and Fixed Lite Windows flank the living and dining to flood the space with natural light, and a series of large Sliding and Stacker Doors open to the rear entertaining courtyard space. Bedrooms on the first floor feature Double Hung Windows where the top and bottom sashes move simultaneously, so warm air is expelled through the top, and cool air is drawn through below.

In the main bathroom and rear bedrooms, wide Awning Windows are positioned high, so as to provide privacy whilst allowing for controlled ventilation throughout the seasons. Multiple seals on all opening elements help minimise heat loss and suburban noise within the living environment for a peaceful ambience. For sites requiring significant noise reduction, Rylock offers a range of acoustic glazing solutions.



“Bedrooms feature Double Hung Windows where the sashes move simultaneously, so warm air is expelled through the top, and cool air is drawn through below.”

Designer & Builder:	Carter Grange
Frame Colour:	Custom Black (Matt)
Glazing:	Grade A Safety Toughened Low-e Double Glazing (Argon Fill)



South West Elevation



North East Elevation

WHITECLIFFS





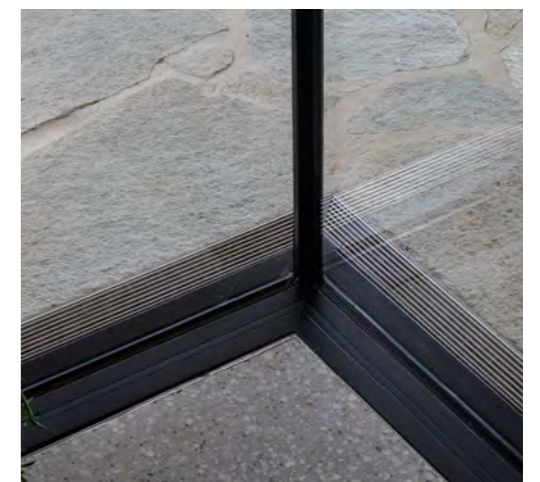
Set on an acre property in the heart of Victoria's Mornington Peninsula, Whitecliffs is the ultimate holiday retreat.

Two rectangular pavilions which emanate from the entry are placed around a central elm tree, which was a unique feature for a coastal property, but warmly loved by the occupants. The garden flows through the pavilions with large Sliding and Stacker Doors for a natural transition between internal and external experiences.

Charred timber rises from the lush landscape, where Fixed Lite Picture Windows highlight Electric Operator Awning Windows that expel hot air and draw in the cool sea breezes. A double glazed Butt Joint Window sits at one corner, to provide uninterrupted views of the swimming pool and games pavilion beyond.

The living space features an angled timber-clad ceiling, artisan-made log burning fireplace and incredible contrasting materials. Fixed Lite Picture Windows are dotted throughout the room for visual interest and to the north elevation, highlight Electric Operator Awning Windows that expel hot air and draw in the cool sea breezes. A double glazed Butt Joint Window sits at one corner, to provide uninterrupted views of the swimming pool and games pavilion beyond.

Frame Colour:	Custom Black (Matt)
Glazing:	Grade A Safety Toughened Low-e Double Glazing (Argon Fill)
Designer:	Ascui & Co Architects
Builder:	G.R Williamson & J.A Williamson
Photographer:	Veeral Patel



“Fixed Lite Picture Windows are dotted throughout the room for visual interest and highlight Electric Operator Awning Windows that expel hot air and draw in the cool sea breezes.”



East Elevation



North Elevation



ECLECTIC STYLE



Playful, fluid lines and eclectic style combine in this exceptionally renovated Californian bungalow, located in Melbourne's inner north. The original building still offered plenty of character, now impeccably restored and expanded with artistic touches and eclectic colours and materials, including green-glazed Euroa bricks to the ground level and curved steel cladding to the first floor extension.

The living and dining feature Sliding and Stacker Doors, with Fixed Lite and Awning Windows to the kitchen, powder coated in Anodic Bronze (from Rylock's 30 standard colours and textures). This satin finish enhances the selection of building materials including natural stone benchtops and floors, and multi-coloured glazing inserts (*by others*) to the kitchen and dining.

Upstairs, the master bedroom is flooded with light through the custom made, high performance Raked, Fixed Lite and Awning Windows, glazed with Grade A Safety Toughened Low-e Double Glazing (Argon Fill), which welcome the morning sun. Custom designed and fabricated by the project's Architectural Builder, motorised screens shade the occupants without compromising on the aesthetics of this incredible, architectural feature. To the south elevation, Fixed Lite Windows which abut the sculptured floating staircase are specified with patterned glass for privacy, allowing soft light and sculptural lines to illuminate the space.

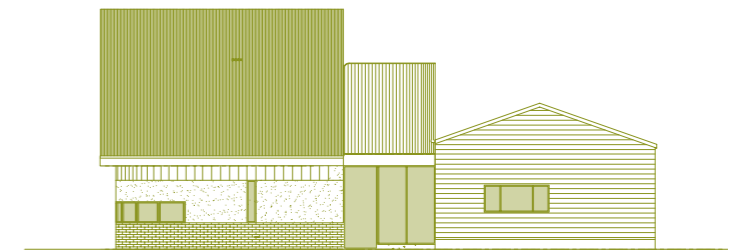
Frame Colour:	Anodic Bronze (Satin)
Glazing:	Grade A Safety Toughened Low-e Double Glazing (Argon Fill)
Architectural Builder:	Elyte Focus
Photographer:	Erhan Tirli



“Upstairs, the master bedroom is flooded with light through the custom made, high performance Raked, Fixed Lite and Awning Windows, which welcome the morning sun.”



East Elevation



North Elevation

DAWSON CREEK





In the southern Mount Lofty Ranges, South Australia, lies a Strathalbyn residence, where the bubbling stream of nearby Dawson Creek can be heard. Featuring American Oak timber, rammed earth walls and burnished concrete flooring, this residence is flooded with natural light, and deeply connected to its surroundings.

This home is thoughtfully designed with passive design principles of orientation, thermal mass and high performance glazing in mind.

The welcoming entry features a *frame only option*, where a timber panel is fitted with Fixed Lite Windows to the left and right-hand side of the oversized door. The rammed earth wall, high in thermal mass, slows down the passage of heat and provides an architectural feature in the living and dining.

Celebrating family and nature, the living area is flanked by expansive entertaining spaces through the 4-panel Sliding Door and 6-panel Stacker Door, positioned on either side. Highlight Fixed and Electric Operator Awning Windows to the north elevation provide passive solar gain and expel warm air in the cooler months. The Fixed Lite Picture Window in the living area features a reading nook finished in American Oak timber. This material provides natural warmth and is incorporated into the kitchen cabinetry and island seating.

Custom made Awning Windows in the bedrooms have been designed with the opening sash positioned far below the occupant's sightlines, to provide an unobstructed view which can be vent key locked to promote passive ventilation.

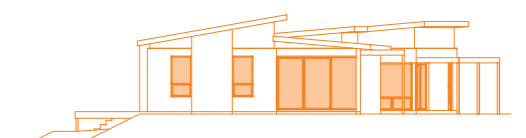
“Celebrating family and nature, the living area is flanked by expansive entertaining spaces through the 4-panel Sliding Door and 6-panel Stacker Door, positioned on either side.”



Frame Colour:	Colorbond® Monument Textura
Glazing:	Grade A Safety Toughened Double Glazing (Argon Fill)
Designer:	Personalised Home Designs
Builder:	Aaron Martin Construction
Photographer:	Art Department Creative



North Elevation



South Elevation

HAWKS NEST



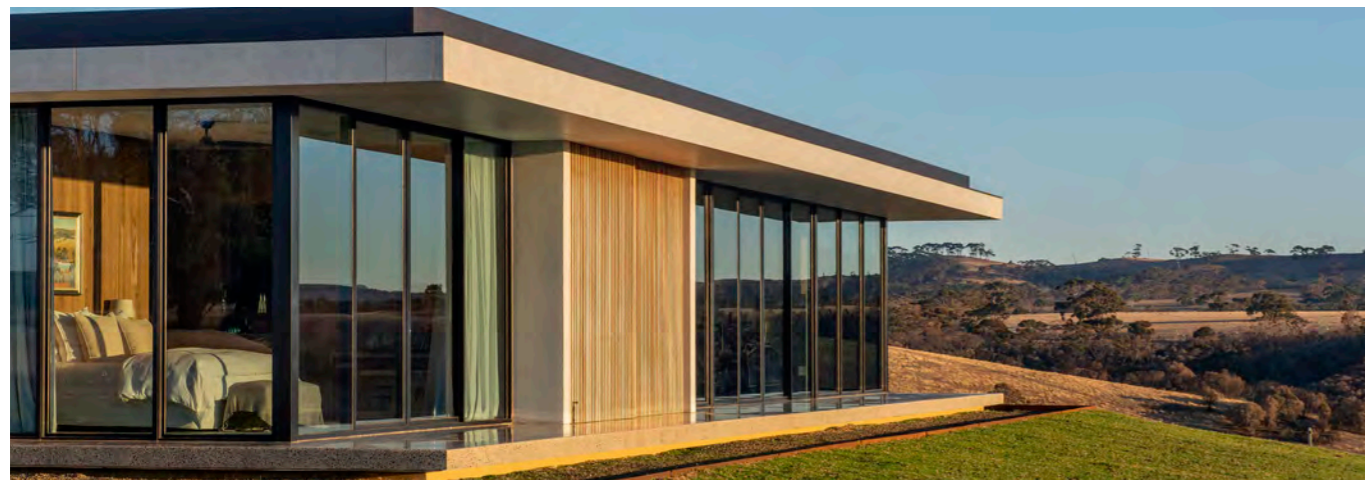
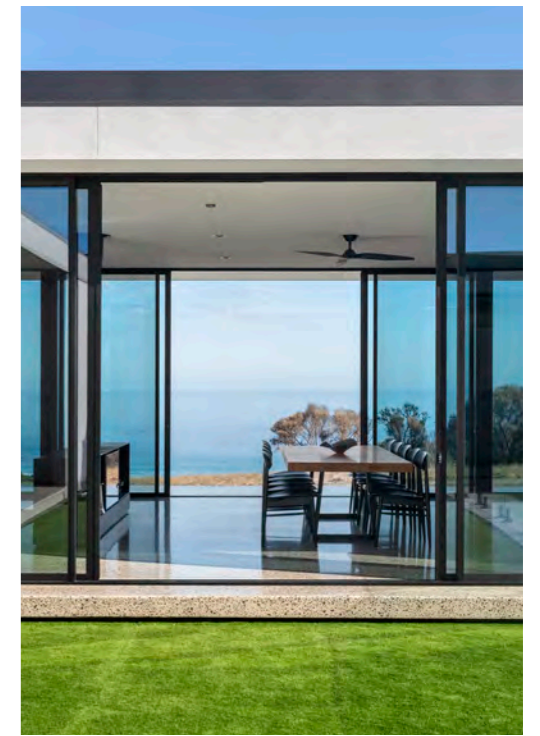


Perched atop remote pastoral hills overlooking the rugged mid-north coast of Kangaroo Island, South Australia, Hawks Nest provides an intimate experience of the surrounding natural beauty.

Blackbutt baton timber screens and panelling add natural warmth and provide privacy, while concrete floors and rendered blockwork walls harness the resilient and raw physicality of the home's surrounds. Large Fixed Lite Windows adorn the home on all orientations to frame portraits of the landscape, with panoramic views of valleys and the rugged coastline.

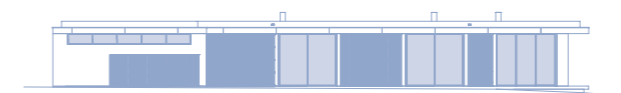
The trade off for expansive clifftop views is exposure to relentless winds, calculated at N3 and a Bushfire Attack Level rating of BAL19. Extra heavy interlockers on the home's 3-metre high Sliding Doors, deliver structural integrity, allowing glass sizes to be maximised without compromise. All glass is Grade A Safety Low-e Toughened Double Glazing (Argon Fill) with a grey tint to minimise glare and excessive summer heat gain.

Designed as two independent residences wrapping around a central sheltered courtyard, these flexible spaces can come together, to act as one home around the sparkling central swimming pool.



Frame Colour:	Custom Black (Matt)
Glazing:	Grade A Safety Toughened Low-e Double Glazing (Argon Fill) with grey tint
Designer:	Contech Architects
Builder:	NRG Building
Photographer:	David Sievers

“Extra heavy interlockers on the home’s 3-metre high Sliding Doors, deliver structural integrity, allowing glass sizes to be maximised without compromise.”



North Elevation



West Elevation



WAKANUI
TRAIL HOUSE



Wakanui Trail House, situated in the inner suburbs of Melbourne, pays deference to biophilic design, nurturing a love of place by connecting the occupants with the surrounding native bushland.

The project has transformed the original Californian Bungalow, playfully drawing the eye inwards with a Raked Fixed Lite Window that offers visual interest and a connection to the environment with the use of raw, locally sourced materials.

The home features Sliding, Double Hung and Louvre Windows and Sliding Doors which promote significant cross-flow ventilation; and with a slim profile, these products minimise obstruction into walkways and outside living areas. The kitchen's Sliding Window runs the entire length of the benchtop to draw the outside in, whilst the adjacent Bifold Servery Window delivers effortless entertaining.

The living room Sliding Window is flanked by an inviting timber bench that rests on both the interior and exterior of the home. Above, the void is filled with natural light from the large Fixed Lite and Louvre Windows through a double-height void that connects to the master bedroom retreat above. Three large Sliding Doors, Louvre and Sliding Windows provide thorough ventilation to the master, whilst inviting a spirit of exploration and a sense of connection to the parklands beyond.

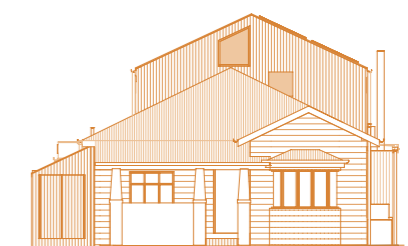
“The kitchen’s Sliding Window runs the entire length of the benchtop to draw the outside in, whilst the adjacent Bifold Servery Window delivers effortless entertaining.”



Frame Colour:	Custom Black (Matt)
Glazing:	Grade A Safety Toughened Low-e Double Glazing (Argon Fill)
Designer:	Ben Callery Architects
Builder:	Keenan Built
Photographer:	Jack Lovel



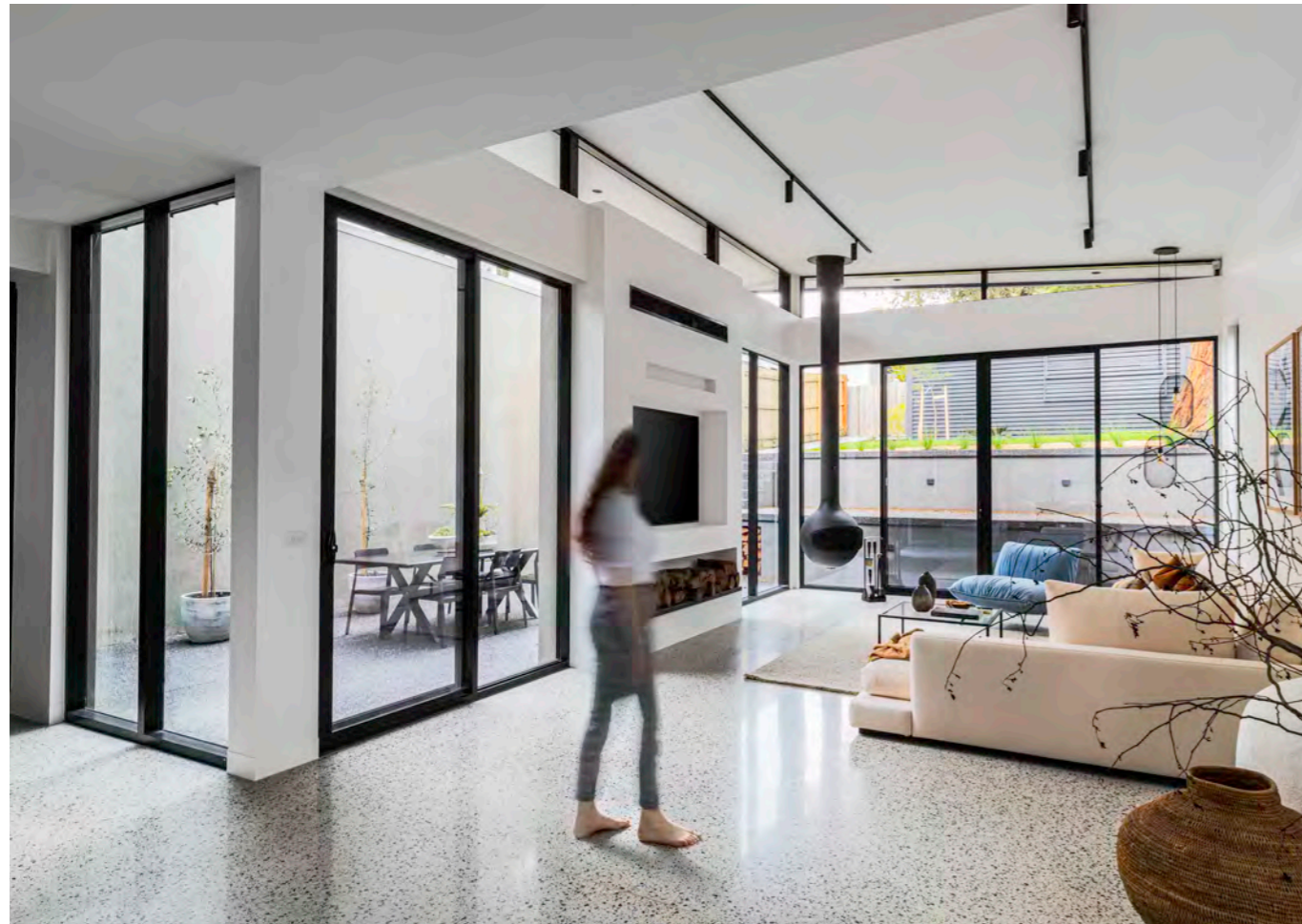
West Elevation



East Elevation

DUAL JEWEL



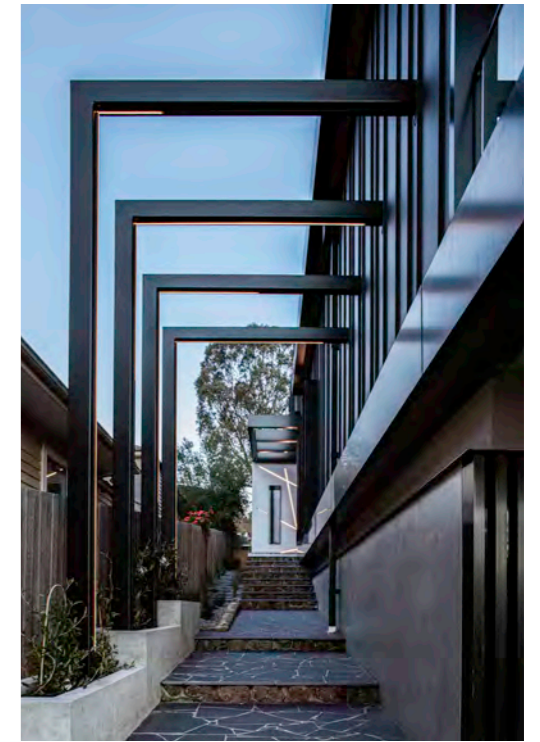


In the north-eastern suburbs of Melbourne, these luxurious townhouses provide a striking juxtaposition to the surrounding leafy streets and gently rolling terrain. With polished concrete, standing seam cladding and natural stone – modern lines are enhanced by accent and ambient lighting for aesthetics, energy efficiency and functionality.

The westerly front façade is shaded with horizontal battens to diffuse the light and reduce unwanted heat gain, delivering comfort and privacy to the master bedroom which features Sliding Doors, Raked Fixed Lite Windows and Butt Joint Windows for an architectural touch.

The open plan kitchen, living and dining are drenched in sunlight through 3-metre high Fixed Lite, Highlight and Raked Fixed Lite Windows and Sliding Doors, connecting the occupants to the rear courtyard; whilst an alcove through the dining offers tranquillity amongst the garden. Thoughtfully designed, both residences feature a central courtyard with vast 7m² Max Lite Windows welcoming light through the northern elevation.

This project takes full advantage of Rylock's custom, high performance, Window and Door products, to highlight the architectural style and quality craftsmanship that defines this unique build.



“The westerly orientation is shaded with horizontal battens to diffuse the light, and high performance glazing reduces unwanted heat gain to deliver comfort and privacy.”



Frame Colour:	Custom Black (Matt)
Glazing:	Grade A Safety Toughened Low-e Double Glazing (Argon Fill)
Designer:	Mills Gorman Architects
Builder:	The Nesis Group
Photographer:	Erhan Tirlı



East Elevation



West Elevation

MAGIC BEACH HOUSE





This tiny home, located in Walkerville on Waratah Bay, Victoria, delivers incredible versatility with a thoughtful and sustainable design. Built in a range of BAL40 compliant Rylock Window and Door products, cladding the exterior façade offered a unique canvas for the building to be painted by local artists: April Phillips, Beci Orpin, Carla McRae and David Booth.

The interior walls, ceilings, cabinetry and flooring are in a single material, white-washed radiata pine ply, opening up the space to reduce visual clutter and bring the outdoors in through Rylock custom made Windows and Doors, in Colorbond® Monument (Matt) powder coat finish.

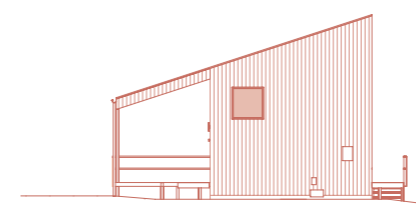
Highlight Awning Windows to the south elevation promote cross-flow ventilation, and to the north, the roof extends over the deck to prevent the summer sun from entering the living areas. The versatile first floor with pitched ceiling features a bedroom and yoga retreat with a large Raked Fixed Lite Window, providing breathtaking views of Wilsons Promontory. With the builder's detailed knowledge of Passivhaus construction principles, an outstanding blower door test result of 0.42m³/hr.m²@50Pa was achieved, aided by Rylock's high performance dual weather seals on all openable sashes, reducing air infiltration to help regulate the living environment, for increased comfort.

This home blends respectfully into its surrounds. Indigenous planting to improve local biodiversity has been kept to low heights to reduce the threat of bushfire in this harsh, BAL40 environment and heavy duty extrusions deliver structural integrity to withstand the N3 wind speed classification for the site.

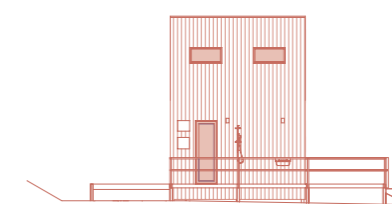
“The versatile first floor with pitched ceiling features a bedroom and yoga retreat with a large Raked Fixed Lite Window, providing breathtaking views of Wilsons Promontory.”



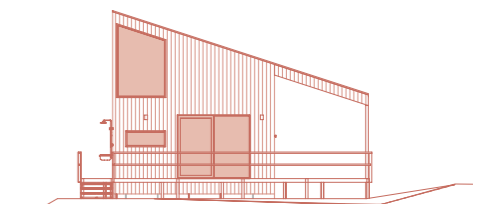
Frame Colour:	Colorbond® Monument (Matt)
Glazing:	Grade A Safety BAL40 Toughened Low-e Double Glazing (Argon Fill)
Designer:	Imogen Pullar Architecture
Builder:	MVH Constructions
Photographer:	Marnie Hawson



West Elevation



South Elevation



East Elevation



Manufacturing and Associations

All Rylock products are locally fabricated in one of our dedicated manufacturing facilities in Melbourne and Adelaide. Local manufacturing provides customers the opportunity to visit Rylock facilities and observe operations firsthand.

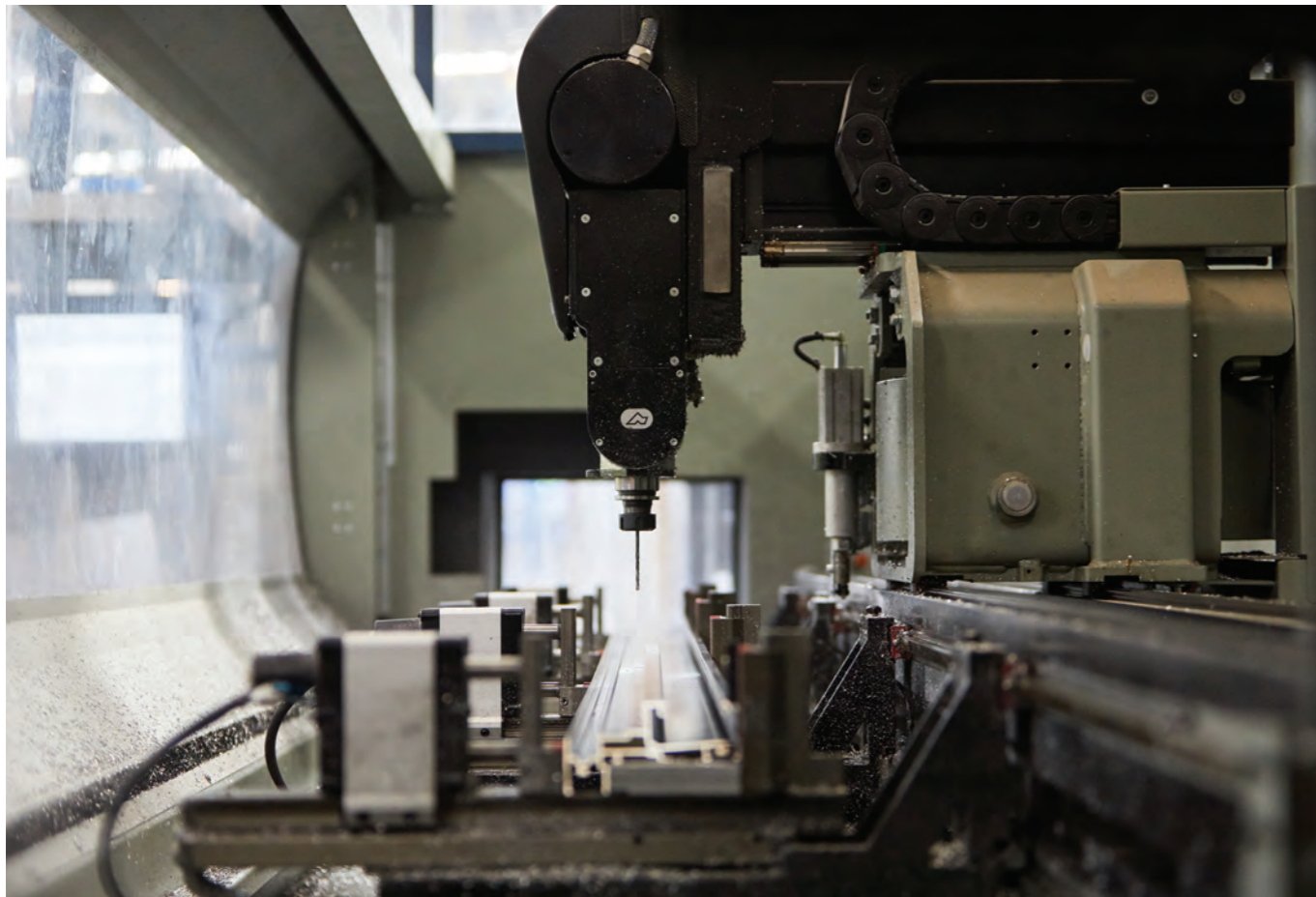
Rylock is committed to a high standard of manufacturing and harnesses the latest technology. Window and Door production features computer numeric controlled (CNC) machinery for precision profiling of the complex aluminium extrusions. All products undergo rigorous testing in an independent NATA-accredited laboratory for compliance to Australian Standards *AS2047 Windows & External Glazed Doors in Buildings*, and our team of Sales Consultants are trained in the requirements of *AS1288 Glass in Buildings* and relevant aspects of the National Construction Code.

Powdercoating is undertaken in-house and has been independently tested by the CSIRO for durability. Our thirty standard colours feature a neutral palette of traditional tones, contemporary metallics, Colorbond® favourites and textured finishes.

Rylock has extensive resources to support customers in the best practice application of its products, including custom ratings for U-value and SHGC energy performance. Our extensive online library has technical resources for building-in installation detail with 3D interactive renders, as well as operation and adjustment videos. Specifiers and Builders can also download the comprehensive AutoCAD® and Revit® Library resources.

Rylock products have increased in size to meet the needs of contemporary architecture and design trends. All products greater than 60kg's are expertly site glazed by specialist Site Activities Teams.

Rylock is an established figure in the Australian Window and Door industry. We are an active member of various associations such as the Australian Glass and Window Association, Master Builders Association and the Housing Industry Association. The collaborative process between Rylock Sales Consultants and Clients has delivered long standing relationships based on trust and the delivery of quality, custom, product solutions.



Careful handling of powder coated extrusions and precision CNC profiling of an aluminium section



Explaining the manufacturing process at Dingley



Experience quality,
style and performance
at your nearest
showroom.

VICTORIA

Coburg North

129 Bakers Road

Dingley

369 – 377 Lower Dandenong Road

NEW SOUTH WALES

Artarmon

11 / 76 Reserve Road

SOUTH AUSTRALIA

Woodville North

26 Audley Street

TASMANIA

Mobile Display

Book an appointment and we'll bring
our mobile showroom to you.

www.rylock.com.au

1800 RYLOCK

Cover: Designer / Builder: Latitude 37
Photograph: Erhan Tirli

Disclaimer: Rylock is committed to a continual process of product development and improvement. Consequently, some Windows and Doors in this document may no longer be available in the form illustrated. Your Sales Consultant can offer further guidance at the time of your consultation. V22.1

