

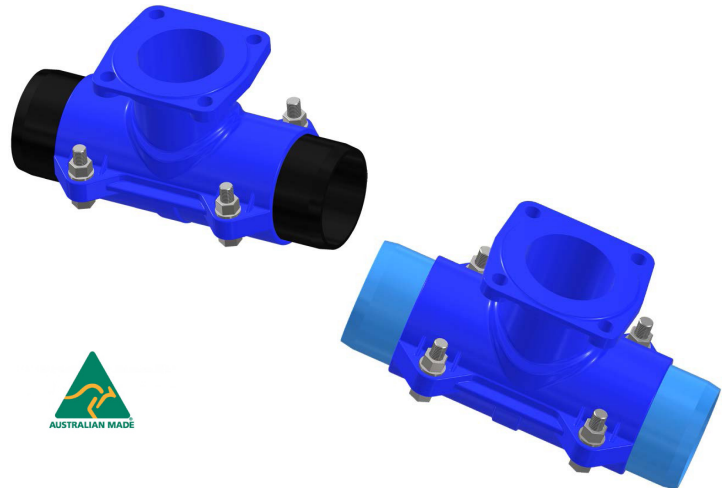
FLANGED OFFTAKES

DUCTILE IRON FLANGED OFFTAKE (UNICLAMP)

The Derwent Industries Ductile Iron Flanged Offtakes are used for under pressure tapping on pipelines and can be affixed at desired points where tapping is required. The couplings have been designed in conjunction with pipeline tappers for ease of installation. The use of bracing lugs running between the bolt holes, allows the tapper to hold the two halves of the coupling together whilst inserting bolts and tensioning. Please refer to your local water authority to ensure approved for use in your region.

FEATURES

- **Material:**
Ductile Iron Body with 316 SS Bolts
- **Coating:**
FBE, Plascoat or Rilsan/ Nylon 11
- Two parts for ease of assembly.
- Bolt Locks/Lugs to support bolts tensioning.
- Bracing Lugs to assist installer in holding halves together whilst bolting up.
- Series 2 please specify Ductile Iron or PVC.



APPLICATION

The Derwent Industries PE Flange Adapters are for use in Potable Water, Waste Water, Fire, Irrigation and Water Circulation applications and are suitable for both above and below ground installation.

INSTALLATION

Suitable for above or below ground and shall be in accordance with the relevant regulatory codes and local authority requirements. The system should be pressure tested before backfilling or concealment.

TECHNICAL DATA

PE Sizes:	DN 125 and DN 180
Series 2 Sizes:	DN 100 (suit OD 122) and DN 150 (suit OD 177)
Offtakes:	DN 80, 100 & 150
Certification:	SAI Global
PE - Product License No.:	SMK26385
WaterMark License No.:	WMK26385
WSAA No.:	PA1828
S2 - Product License No.:	SMK26386
WaterMark License No.:	WMK26386
WSAA No.:	PA 2025
SUITABLE FOR POTABLE (BLUE), RECYCLED (LILAC) WATER AND WASTE WATER	
Allowable Operating Pressure:	1600 kPa, 1.6 Mpa
Maximum Test Pressure:	2400 kPa, 2.4 Mpa