

Guideline to choosing removable insulation



Choosing the Right Removable Insulation

Expert Guidance from Insulock

With rising energy costs and increasing demand for efficiency, selecting the right removable insulation is more important than ever. At Insulock, we've spent over 35 years perfecting our Thermocovers to deliver performance, reliability, and long-term value. Here's what to consider when choosing a removable insulation solution:

Design Matters: The success of any removable insulation cover begins with its design. A poorly fitted blanket wrapped around a valve won't deliver the intended performance. A properly designed Thermocover should contour precisely to the equipment, ensuring maximum thermal efficiency, reduced energy loss, and faster payback.

Material Specifications: Manufacturers should provide detailed technical information about all components used in the cover's construction. This includes outer layers, threads, insulation materials, and closure systems. For high-temperature applications, material suitability is especially critical—some fabrics and closures may not withstand elevated conditions.

Ease of Use: Removable insulation must be simple to install, remove, and reinstall. If a cover is difficult to handle, it may be left off during maintenance, eliminating the economic and energy-saving advantages over rigid insulation.

Sample Covers: For major projects, reputable manufacturers should offer sample covers tailored to your specifications. This allows for hands-on evaluation of fit, quality, and usability, and sets a benchmark for comparing quotes and product offerings.

Thermocover Checklist

- Design
- Materials
- Ease of Use
- Samples
- Price
- Time Frame
- Australian Made
- Research
- Specialists
- Warranty

Price and Payback: Insulation is one of the few investments that actively pays for itself. While low-cost Thermocovers may seem appealing upfront, poorly fitted covers often fail to perform, leading to reduced energy savings and extended payback periods. Worse, if they're difficult to reinstall, they may be left off after maintenance—eliminating their economic benefit. A well-fitted cover ensures consistent performance and maximises your return on investment.

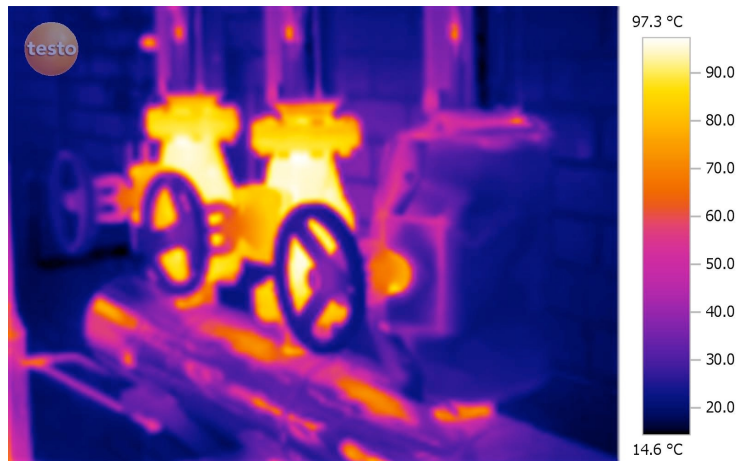
Lead Times and Project Planning: Be cautious of suppliers promising unusually short lead times for large-scale projects. Precision-fitted removable insulation is a complex product that requires time to manufacture correctly. For major projects, standard lead times often exceed 15 working days. Rushing this process can compromise quality and fit.

Proudly Australian Made: All Insulock Thermocovers are designed and manufactured in Australia. We're committed to supporting local industry, creating jobs, and contributing to long-term national investment. Choosing Australian Made means choosing quality, accountability, and community.

Do Your Research: The internet makes it easy to compare providers. Reputable manufacturers will offer technical specifications, product galleries, and case studies on their websites. If you're unsure, ask for references or request a sample to assess quality and fit firsthand.

Work with Specialists: Choose a company that specialises in insulation and removable Thermocovers. Businesses that dabble in unrelated products may lack the technical expertise and purpose-built technology required to deliver high-quality, reliable solutions.

Warranty and Support: A trustworthy manufacturer stands behind their product. Look for companies that offer warranties and ongoing support to ensure your investment is protected.



Why Insulock? Insulock is Australia's market leader in removable Thermocover manufacturing. Our sole focus is "Energy Conservation Insulation." We continually invest in advanced technologies—including handheld 3D scanners, industrial modelling software, robotic plotter cutting tables, and thermographic imaging—to deliver tailored solutions that meet your exact needs.

Insulock Thermocovers: Solving the insulation problems no one else can

