

"It won't let go"

2 TONNES MAX

GRAZIER'S HAND™ HD POST GRIPPA

strathroy100@bigpond.com 07 4653 0073



The Grazier's Hand™ Post Grippa is designed to pull steel fencing posts from the ground with efficiency and safety while increasing the salvage rate of posts.



Pulling posts out with a tractor and chain can result in the bent, twisted, broken posts or the chain slipping causing damage to machinery and workers (especially wives).

The Grazier's Hand™ Post Grippa slides over the post and once the front end loader starts to lift the cams go to work gripping while lifting. When the post has cleared the ground just lift the Grazier's Hand™ Post Grippa and remove the post.

The Post Grippa comes with

- Two tonne maximum lift capacity, load tested and proven. As per BBO LQM 13.1
- Heavy Duty Bisalloy Cams
- Hardened Bushes
- Zinc Plating for corrosion free Long Life
- 12.9 High Tensile cap Screws
- Being small enough to fit in the toolbox, it will be the cheapest worker employed.

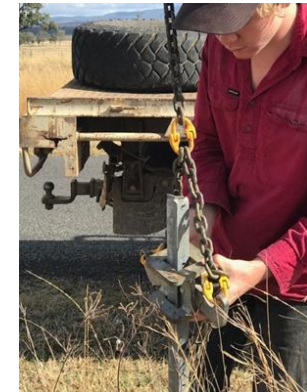
Two models are available: the HD Post Grippa for standard posts and HD Post Grippa for larger posts.

From those who have tried the Grazier's Hand™ Post Grippa:

Over the years, we have tried many products for star picket removal and found the Grazier's hand Post Grippa was the easiest, most efficient and durable in its class. It maintains the integrity of the star picket after being pulled out of the ground. After picket removal, the Grazier's Hand™ Post Grippa is effortlessly removed from the post and onto the next picket.

Its durability has been tested thoroughly by using the front-end loader of the tractor, at times the tractor would lift off the ground on the more stubborn posts. It is made of the best materials and the craftsmanship shows, as anyone can use it. We are able to remove 200 star pickets an hour... you will never need anything else!!

Roberts Family Texas



From my experience the Grazier's Hand™ Post Grippa is a fantastic bit of gear. It is a heavy duty designed tool that is compact and lightweight which allows me to keep it on the tractor or in the toolbox close by for whenever it's needed.

It is so easy to use to remove posts from the ground for re-use. It's as simple as lifting the Grazier's Hand™ Post Grippa over the top of the post sliding it down a little bit until it can catch and then letting the tractor pull it straight up. There is absolutely no damage done to the post itself and once the post is out of the ground the Grippa just slides back over the top ready for the next one.

I have used this tool every time I have had to pull out posts and it has never disappointed me. It will be used many more times yet.

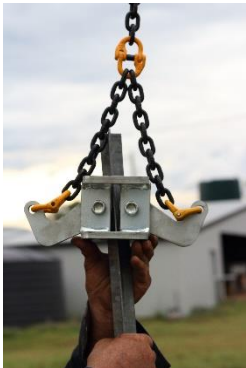
Steve Swain - Mountview Station Tamworth

Instructions for Use

- 1) Hook the Post Grippa to the Front End Loader
- 2) Allow Front End Loader to approach the post with a clear view of the post and Post Grippa
- 3) Slide Post Grippa over the post with slack chain



- 4) Step away from front end loader and use hydraulics to lift the picket out of the ground. Ensure all personnel are well clear at this time.
- 5) Once the picket has been removed lift the Post Grippa at its base, while holding the post and slide off the top of the post.



Warranty Incl **GRAZIER'S HAND™**

12 Months from the date of Purchase

Our goods come with Guarantees that cannot be excluded under the Australian Consumer Law. You are entitled to a replacement for a major failure and compensation for any other foreseeable loss or damage. You are entitled to have the goods repaired or replaced if the goods fail to be acceptable quality and the failure does not amount to a major failure.

We will repair or replace for a failure of the product if it is due to material failure or defective manufacture or assembly and if it is within its load capacity.

Warranty Exclusions Include the following:

The Post Grippa will not be covered if it is compromised by loads greater than two tonne. The load will need to be proven to be two tonne or below for warranty to be carried out.

Any modification to the Post Grippa, parts removed and reassembled incorrectly

Any use outside the intended use the Grazier's Hand Post Grippa.

Any misuse or damage to components by outside forces, for example but not limited to hammer blows.



Be aware of the pinch points: between the cams of the Post Grippa; between loader frame and chain



Be aware of the Front End loader movement. Move away from the tractor and Front End loader when the post is being lifted out of the ground.



Ensure communication lines are open.

Safety is your responsibility.