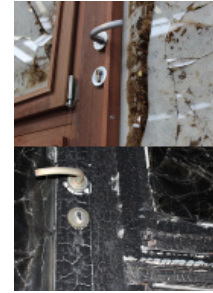




Safety for all Bushfire Attack Levels (BAL's), including BAL-FZ, without the need for shutters. Tested, approved, compliant.



## Range inclusions

- Custom made, size limitations apply
- Frame made from self-extinguishing, FSC® certified, Manilkara Bidentata
- Double glazed with special fire protection glazing
- German hardware fittings
- Oiled once with Cutec wood preservative, or low VOC spray-painted or stained in the colour of your choice by request
- U-values from a very low 1.4
- Ember / flyscreens for all windows as per Australian Standard
- Suitable for Passive House
- Tested, approved and compliant to all relevant Australian Standards
- Compliance certification supplied with windows and doors

## Available in the range:

**BAL-40 Windows:** European style tilt & turn, fixed picture, clerestory/tilt, sliding, shapes

**BAL-40 Doors:** French, bi-fold and lift-slide doors, single hinged glass doors

**BAL-FZ Windows:** European style tilt & turn, fixed picture, clerestory/tilt, sliding, shapes

**BAL-FZ Doors:** French doors, lift-slide doors, single hinged glass doors

**-/60/- Party Wall Windows:** Fixed panes only for shared or adjoining walls, please contact us for details





Energy efficient bushfire safe windows & doors have been tested and are approved for Bushfire Attack Level-Flame Zone (BAL-FZ) without the need for shutters. Products are supplied with compliance certification.



## Specifications

- Frame in IV 78mm FSC® certified Manilkara Bidentata hardwood
- Schott Pyranova glass 14mm with invisible intumescent layers
- Double glazed for energy efficiency
- Custom made to size and shape
- Oiled once with Cutec wood preservative, or low VOC spray-painted or stained in the colour of your choice by request
- German hardware
- Seals and multi-point locking
- Tested and approved to AS 1530.8.2-2007, complies with AS 3959-2009 and AS 3959-2018
- Test reports available on request
- Compliance certification supplied

## Size:

- Maximum pane size including frame 2.8m<sup>2</sup>, for larger areas dividing mullions or rails can be used
- Maximum height or width 2.4m
- Minimum rail height at floor level 80mm

Energy rating: from a very low 1.6





Energy efficient bushfire safe windows & doors have been tested and are approved for Bushfire Attack Level-40 (BAL-40) without the need for shutters. Products are supplied with compliance certification.



## Specifications

- Frame in IV 68mm FSC® certified Manilkara Bidentata hardwood
- Viridian Pyro40 glass
- Double glazed with up to 16mm argon filled gap for energy efficiency
- Custom made to size and shape
- Oiled once with Cutec wood preservative, or low VOC spray-painted or stained in the colour of your choice by request
- German hardware
- Seals and multi-point locking
- Tested to AS 1530.8.1-2007, complies with AS 3959-2009 and AS 3959-2018
- Test reports available on request
- Compliance certification supplied

## Size:

- Maximum pane size including frame 4m<sup>2</sup>, for larger areas dividing mullions or rails can be used
- Maximum height or width 2.7m
- Minimum rail height at floor level 80mm

Energy rating: from a very low 1.4

