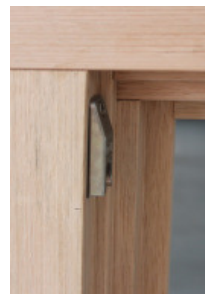




Superior energy savings in domestic sized windows and doors, made in Australia from plantation grown Victorian Ash timber and Australian glass with patented German hardware.



## Range inclusions

- Victorian Ash timber or FSC® certified Manilkara
- Frame thickness: IV 68mm
- Custom made to 2.4m height
- Double glazed with 14-20mm airgap
- German hardware fittings, partly surface mounted
- Pronounced joints
- Spray painted with low VOC paints or stains
- Timely delivery – Installer training
- Standard industry warranties apply and 10 years warranty on glass
- Noise reduction up to 38dB
- U-values from a very low 1.8

## Available in the range:

**Windows:** European style tilt & turn, fixed picture, clerestory/tilt, sliding

**Doors:** lift-slide sliding, bi-fold, French, single hinged glass doors

## Komfortline

A great way for builders and savvy home owners to add value and achieve superior energy savings with paint-ready windows and doors.

**Range inclusions:** All inclusions as for Komfort+, however Komfortline is primed only and ready for painting.





Easily operated with the turn of the handle: tilt inwards at the top for child proof ventilation; turn and fully open for easy cleaning. Energy efficient and draft proof, with high sound protection, and secure locking.



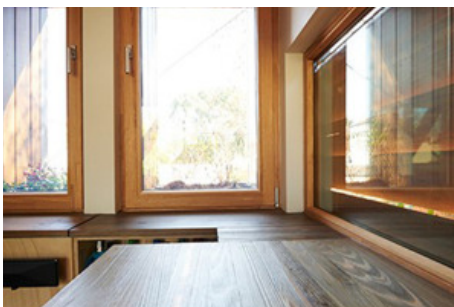
## Specifications

- Timber frame thickness IV 68mm
- Pronounced joints
- Double glazed with 1x 14-20mm airgap, depending on glass thickness
- Choice of glass combinations
- Komfort+: low VOC spray-painted or stained in the colour of your choice
- Komfortline: primed and paint ready
- German tilt & turn hardware, multi-point locking, partly surface mounted
- Childproof available
- Seals to eliminate drafts
- Suited for bushfire areas up to and including BAL-29

## Size:

- Minimum 600mm height x 420mm width
- Width up to 1200mm at min height of 1500mm, max 2100mm
- Height up to 2400mm at max width of 1000mm

WERS energy rating: from a very low 1.8  
Ultimate strength N6/C4







Fixed panes enable you to enjoy a clear view without obstruction, acting as a picture frame for the scenery outside of the window. Often used in combination with openable windows or doors.



## Specifications

- Timber frame thickness IV 68mm
- Pronounced joints
- Custom made to 2400mm height
- Double glazed with 1x 14-20mm airgap, depending on glass thickness
- Choice of glass combinations
- Komfort+: low VOC spray-painted or stained in the colour of your choice
- Komfortline: primed and paint ready
- Suited for bushfire areas up to and including BAL-29

## Size:

- Width up to 4000mm
- Height up to 4000mm
- Maximum overall 11m<sup>2</sup>

WERS energy rating: from a very low 1.8





For special spaces where only a sliding window is suitable. Parallel-slide-tilt or lift-slide options are available. Highly energy efficient and draft proof with high sound protection. Custom made to size and finish.



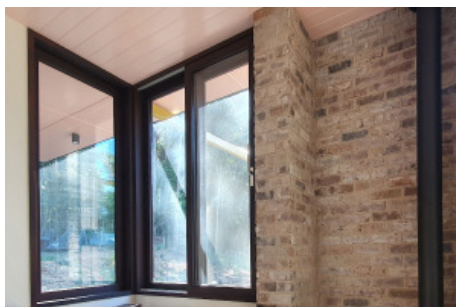
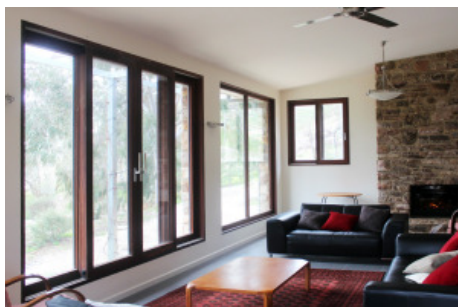
## Specifications

- Victorian Ash or FSC® certified Manilkara Bidentata timber frame
- Frame thickness IV 68mm, pronounced joints
- Double glazed with 1x 14-20mm airgap, depending on glass thickness
- Choice of glass combinations
- Komfort+: low VOC spray-painted or stained in the colour of your choice
- Komfortline: primed and paint ready
- German lift-slide hardware, multi-point locking
- Seals to eliminate drafts
- Suited for bushfire areas up to and including BAL-29

## Size:

- Minimum height 750mm

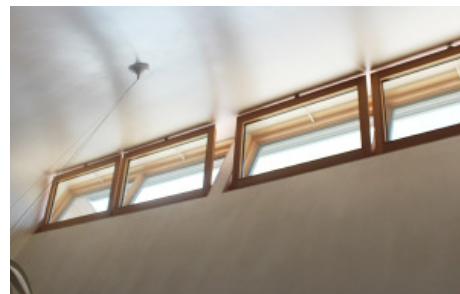
WERS energy rating: from a very low 1.8







Tilting inwards at the top for ventilation, windows can be horizontal or vertical. The handle controls the mechanics and multi-point locking within the frame. Can be automated for hard to reach areas.



## Specifications

- Timber frame thickness IV 68mm
- Pronounced joints
- Double glazed with 1x 14-20mm airgap, depending on glass thickness
- Choice of glass combinations
- Komfort+: low VOC spray-painted or stained in the colour of your choice
- Komfortline: primed and paint ready
- German tilt hardware fittings
- Seals and multi-point locking
- Can be automated with concealed chain drive
- Suited for bushfire areas up to and including BAL-29

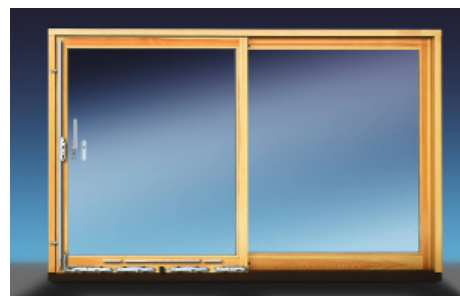
## Size:

- Maximum width 2400mm at maximum height of 700mm
- Height up to 2400mm at maximum width of 1500mm
- Height minimum 450mm

WERS energy rating: from a very low 1.8



Technologically advanced sliding doors offer the highest energy efficiency and no drafts through multi-layer seals and engineered lift-slide action. Available in many configurations.



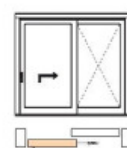
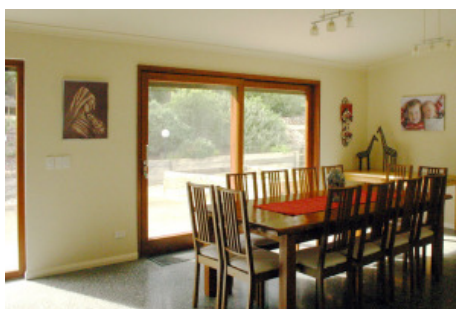
## Specifications

- Timber frame thickness IV 68mm
- Pronounced joints
- Double glazed with 1x 14-20mm airgap, depending on glass thickness
- Choice of glass combinations
- Komfort+: low VOC spray-painted or stained in the colour of your choice
- Komfortline: primed and paint ready
- German lift-slide hardware, multi-point locking
- Multi-layer seals to eliminate drafts, night vent
- Suited for bushfire areas up to and including BAL-29

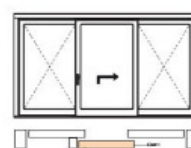
## Size:

- Weight up to 300kg per slider
- Width up to 2400mm per slider
- Height up to 2400mm

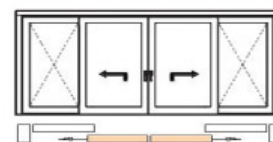
WERS energy rating: from a very low 1.8



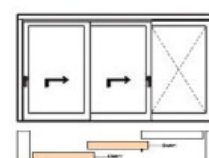
Scheme A



Scheme G



Scheme C



Scheme E





Rebated frames, seals, multi-point locking and double or triple glazing ensure the highest energy efficiency with no rattling. Operated with a handle on every second door, there is no need for shoot bolts.



## Specifications

- Timber frame thickness IV 68mm
- Pronounced joints
- Double glazed with 1x 14-20mm airgap, depending on glass thickness
- Choice of glass combinations
- Komfort+: low VOC spray-painted or stained in the colour of your choice
- Komfortline: primed and paint ready
- German hardware, multi-point locking
- Seals to eliminate drafts
- Inward opening with tilt function, depending on configuration
- Operated with a handle on every second door, no shoot bolts
- Suited for bushfire areas up to and including BAL-29

## Size:

- Width up to 8m (depending on height)
- Height up to 2.4m (depending on width)

WERS energy rating: from a very low 1.8



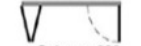
Scheme 431



Scheme 321



Scheme 330



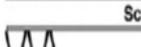
Scheme 633



Scheme 651



Scheme 633



Scheme 633



Scheme 633



Scheme 541



Scheme 550



Scheme 532



Scheme 532



Scheme 761



Scheme 770



Scheme 743



Scheme 743





Enabling easy access to verandahs and outdoor spaces, French doors are custom made with high energy efficiency, high noise protection and no drafts, due to rebated frames, seals and multi-point locking.



## Specifications

- Timber frame thickness IV 68mm
- Pronounced joints
- Double glazed with 1x 14-20mm airgap, depending on glass thickness
- Choice of glass combinations
- Komfort+: low VOC spray-painted or stained in the colour of your choice
- Komfortline: primed and paint ready
- German multi-point locking hardware
- Seals to eliminate drafts
- Suited for bushfire areas up to and including BAL-29

## Size:

- Width up to 2400mm
- Height up to 2400mm

WERS energy rating: from a very low 1.8







High security is ensured with multi-point locking, and 3-D-adjustable hinges and seals work together to ensure a draft-free fit. Barrier-free threshold available.



## Specifications

- Timber frame thickness IV 68mm
- Pronounced joints
- Double glazed with 1x 14-20mm airgap, depending on glass thickness
- Choice of glass combinations
- Komfort+: low VOC spray-painted or stained in the colour of your choice
- Komfortline: primed and paint ready
- German multi-point locking hardware
- Seals to eliminate drafts
- Suited for bushfire areas up to and including BAL-29

## Size:

- Width up to 1300mm
- Height up to 2400mm

WERS energy rating: from a very low 1.8

