

POOL PROGRAMMING PRODUCTS

Commercial pool construction
products by S.R. Smith

S.R.SMITH CONSTRUCTION RECENT/UPCOMING PROJECTS

Victoria Park WA

- SwimWall

Lane Cove NSW

- SwimWall

Uni Of Bath UK

- SwimWall

Shore School NSW

- SwimWall

Macquarie University NSW

- SwimWall

St Andrews College QLD

- Bulkhead

Centenary Pool QLD

- SwimWall

Queensland University of Technology QLD

- SwimWall

Melville Aquatic Centre WA

- SwimWall

Gunyama Park NSW

- SwimWall

Ashfield Aquatic Centre NSW

- Moveable Floor
- SwimWall

Scarborough Beach Pool WA

- SwimWall

Gippsland Aquatic Centre VIC

- Bulkhead

Wangarrata Aquatic Centre VIC

- Bulkhead

St Peter's College QLD

- SwimWall

Cockburn ARC WA

- SwimWall

Oak Park Aquatic Centre VIC

- SwimWall

St Hilda's School QLD

- SwimWall

Miami Aquatic Centre QLD

- SwimWall

Meadowbrook USA

- SwimWall

Bond University QLD

- SwimWall

Griffith University QLD

- SwimWall

HBF Challenge Stadium WA

- Bulkhead

Joondalup Aquatic Centre WA

- SwimWall

University of Queensland QLD

- SwimWall

Taronga Zoo NSW

- Moveable Floor

S.R.SMITH CONSTRUCTION CONTENTS

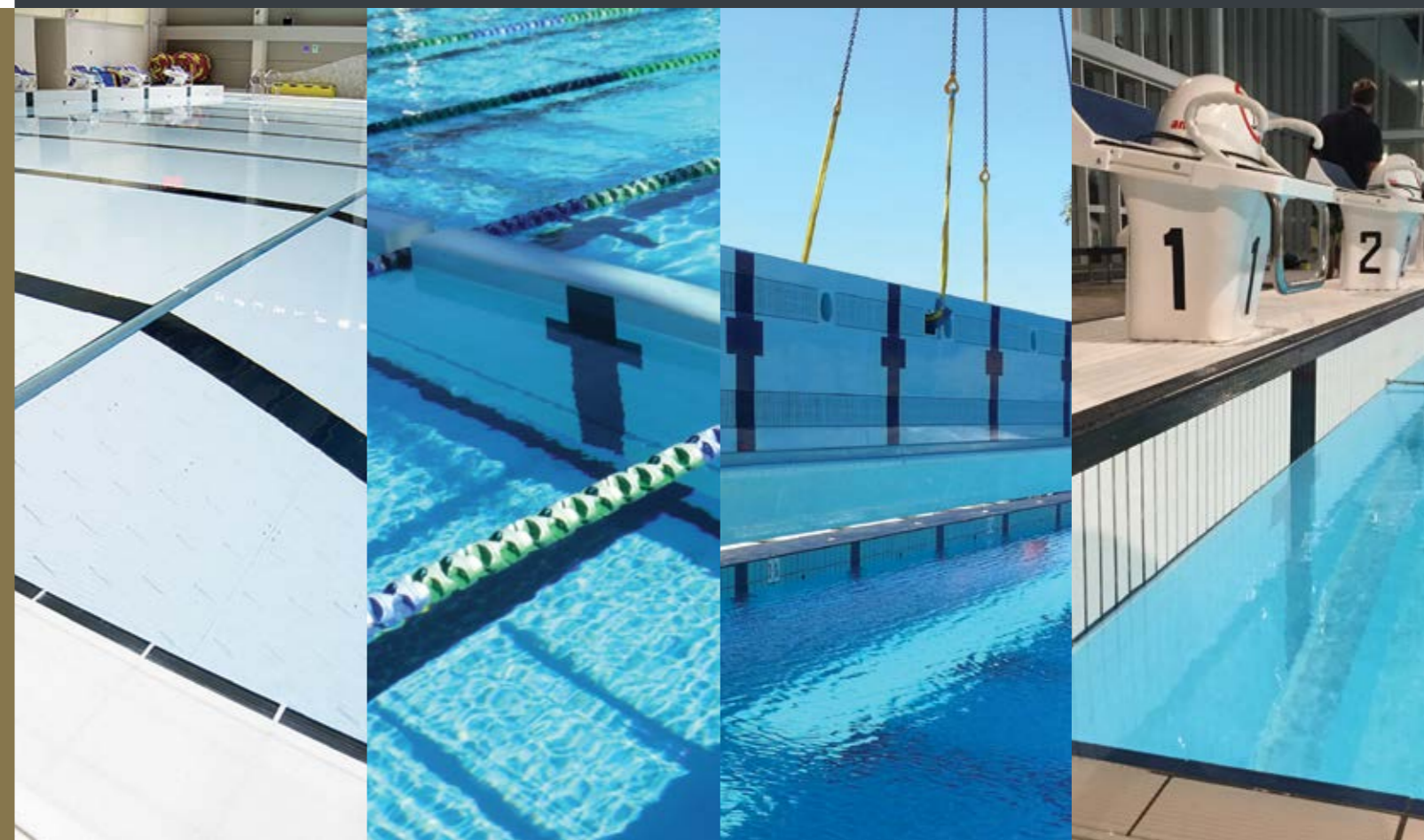
MOVEABLE FLOORS	4
SWIMWALL SYSTEMS	8
BULKHEADS	10
ENDWALLS	14

ENGINEERED FOR SUCCESS

Creating products that make the pool experience better is our singular focus. It means engineering product solutions that provide pool space maximisation to benefit every pool enthusiast: aquatic designers, pool contractors, service providers, facility managers, swim coaches and of course swimmers.

To find out more about other pool products available from S.R.Smith, visit SRSMITH.COM

Starting Blocks • Lane Lines • Water Polo • Accessibility Products



MOVEABLE FLOORS

ADJUST

WATER DEPTH

AT THE TOUCH OF

A BUTTON



Imagine a pool that can be made shallower or deeper as many times in a day as you need; a pool that can handle a swimming lesson, a water polo match or an aquafitness class. That's exactly what Akvo Spiralift from S.R.Smith delivers: a moveable pool floor that can be raised and lowered on demand, transforming your pool into a multipurpose aquatic facility.

Technology and Design

Our Akvo moveable floor solutions are made of a rigid 316L stainless steel, self-supporting floor driven by lifting columns called Spiralift. Innovative and hassle-free, this technology is very robust and can stand up to wear, chlorine and heavy—even very heavy!—loads. The high load capacity of our moveable floors meets the international standard of 65 kg/m², which can be easily increased with additional lifting columns. An adjustable system that meets your every need—that's the real value of made-to-measure.

- Requires up to 50% less vertical space than competing solutions
- For any indoor or outdoor pool
- For pools of all shapes and sizes, with or without in-pool stairs
- For any depth, between 0 and 5m
- No pool shell modifications
- No waterproof recess for motor
- No floor locking system required
- Low cost/low frequency maintenance
- Advanced safety controls



Specifications

150 mm diameter I-Lock™ lifting column
100% 316L stainless steel components
Compliant with international standard of 65 kg/m²

Lift column travel	Up to 5m
Speed	Up to 0.3 m/min
Static capacity	4000kg per I-Lock™ column
Dynamic capacity	1350kg per I-Lock™ column

Warranty

10 years with conditions.



I-Lock™ lifting column and gear assembly

MOVEABLE FLOORS

Installation and Operation

Akvo systems are installed without requiring water in the pool, simplifying their integration into construction projects and making it easy to coordinate work. They do not require a water-tight room for a motor, shaft or cables. On a day-to-day basis, the system's operation is managed from a secure control panel, with the ability to preset the most frequently used configurations. Adjustments are automated and quiet, taking as little as 5 to 10 minutes depending on the desired depth.



MORE SAFETY

Akvo Spiralift moveable floor lets you control water depth and adapt your pool to suit user needs and abilities. Reducing water depth is an efficient way to secure the area, especially for children, beginner-level swimmers and seniors.



MORE USE

Adjust water depth as desired, and transform your pool into a multipurpose facility that can serve a wide variety of users and can quickly meet rules and requirements for aquatic training events and competitions (e.g. FINA).



MORE VALUE

Maximise facility use by accommodating users of all ages and ability levels—from small children to adults. With Akvo Spiralift, the pool adapts to the user, not the other way around!

Beneath an AKVO moveable pool floor there is a technology that has been trusted in the scenic, aerospace and automotive industries for over 25 years: the Spiralift™. Compact yet powerful, this stainless steel lifting system is used by car manufacturers like Ferrari, General Motors, Renault and Kia, and found in prestigious venues such as the Paris Philharmonic, London's Royal Opera House, and New York's Carnegie Hall, as well as in flight simulators around the world.

SWIMWALL SYSTEMS™

SEPARATION
SOLUTIONS
TO OPTIMISE
POOL SPACE



SwimWall Systems™ provide unprecedented swimming pool flexibility and thus more revenue opportunities. SwimWalls are positioned on the pool floor when not in use. By filling the wall with air, it moves into a vertical position, forming a pool wall that is designed to fit around lane lines. This system effectively doubles the number of lanes, or offers the flexibility to have some swim lanes 50 metres in length, and others 25 metres.

Design and Operation

From the pool deck, air is pumped into the SwimWall which causes it to move into a vertical position within seconds. Lane lines can remain in place during the process. A large stainless steel pin secures the SwimWall to a locking mechanism on the pool wall. To lower the wall the pin is retracted, the SwimWall is gently pushed to one side, and air is replaced with water. The SwimWall moves to the pool floor where it remains when not in use.

- Multi-axial composite laminate construction for exceptional strength
- New construction and retrofit options
- Marine grade 316L stainless steel fittings
- Width and height are customised to suit pool requirements
- Marine grade gel coat for colour steadfastness



Warranty

15 year structural warranty with conditions.

Installation

- Underwater installation for retro-fit projects
- Typical installation is completed within 3 days
- Suitable for concrete tiled and vinyl lined pools

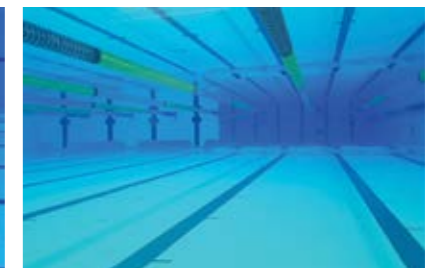
Typical installations



New pool construction
Griffith University QLD



[Rebated] Retrofit installation
Cockburn ARC WA



[Concrete Tiled] Retrofit Myrtha Pool Installation
University of Bath UK [Vinyl]

SWIMWALL FAQ'S

Does my swimming pool need to be drained to install a SwimWall?

No, an S.R.Smith SwimWall™ System can be installed without draining the pool, and usually within 3 days.

What size is a typical S.R.Smith SwimWall™ System?

Each SwimWall is a custom designed solution to work with the pool's width, depth and other requirements. Typical wall width is 250mm.

How is a SwimWall attached to the swimming pool floor?

FRP* hinges are installed to the pool floor using chemically set 316 stainless steel anchors with a minimum depth of 90mm.

How is a SwimWall anchored to the pool wall?

A retractable stainless steel pin in the SwimWall locks into place against the swimming pool wall when in the vertical, upright position.

What material is a SwimWall made from?

An S.R.Smith SwimWall is made from glass reinforced plastics (GRP) that provides excellent strength to weight ratio. It also has a bonded surface colour, molded to the body to match your facility colours.

Is a SwimWall strong enough to withstand tumble turns?

Yes, SwimWalls stay rigid against the force of tumble turns, with minimal deflection. Swim coaches and facility operators can walk along the top surface to unlock the walls or coach swimmers.

Do lane lines need to be removed when raising and lowering a SwimWall?

No, SwimWalls are designed with cut out areas for lane lines to flow through, so 50-metre lane lines do not need to be removed to operate an S.R.Smith SwimWall System™. Removing 50M lane lines and anchoring 25M lane lines to one half of the pool is also an option.

Can lane lines attach to a SwimWall?

Yes, lane line anchors can be installed in SwimWalls, if the desire is to have one half of the pool open, and the other end with lane lines.

Optimally, how deep does the pool need to be at SwimWall installation point?

The pool should be a minimum of 1.5 metres deep at the place the SwimWall is installed. However if the SwimWall is designed to recess into the floor, more shallow installations are possible.

How is the SwimWall raised and lowered?

An air system is supplied with each SwimWall and can work from a 240V 10 amp (50hz) outlet. The air trolley system comes with 20 metres of flexible air hose for a long reach.

Is a SwimWall typically used to separate a long course pool at the half way (25M) point?

Yes, SwimWalls are often installed at the halfway point in a 50-metre pool, however, they are used in a variety of other applications including temporarily converting a 25-metre length to 12.5-metres for learn to swim programs. They are also used to segregate a variety of custom spaces at water parks.

How long does it take for an S.R.Smith SwimWall System™ to move up or down?

The length of the SwimWall has some bearing on this, but typically it will raise or lower in less than 60-seconds. The speed is dependent on size and design.

How many lanes can be covered with one SwimWall?

Typically a SwimWall covers from 2 to 5 lanes. In addition, SwimWalls can be designed to meet other requirements, including winterising part of a pool, or closing facilities in sections.

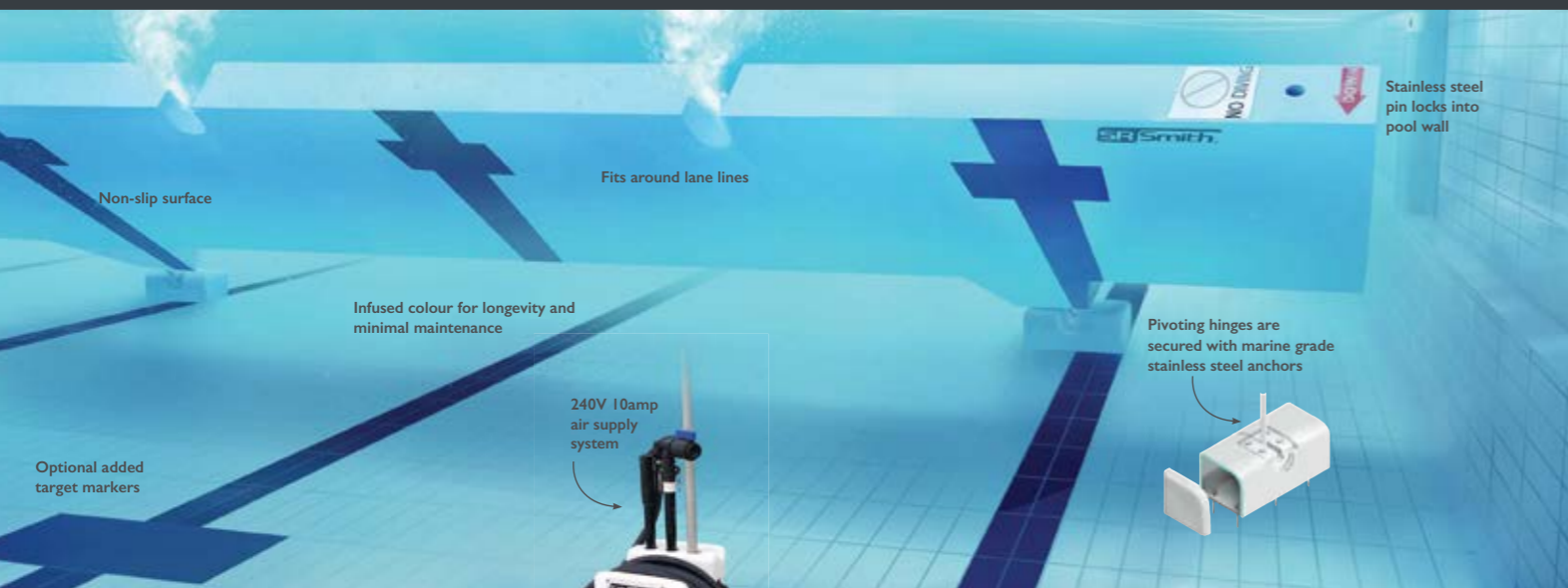
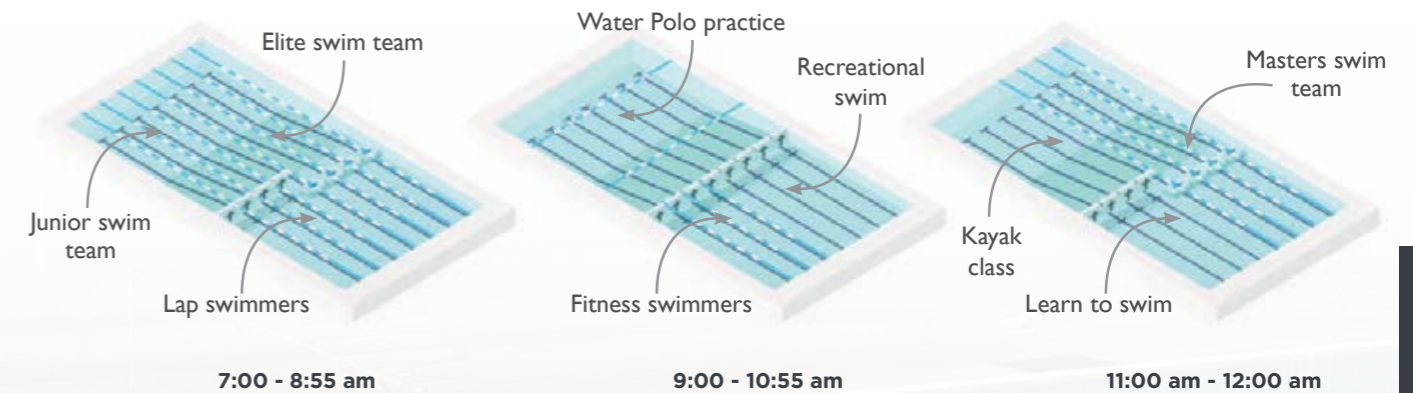
Will it fit into our pool?

Yes. All Pools! S.R.Smith can install the SwimWall on vinyl lined, concrete, fibreglass coated, and tiled pools.

Pool Programming Flexibility

S.R.Smith SwimWalls allow more swimming pool users in the pool at the same time. Wall sections can span the entire width of a pool, effectively doubling the number of swim lanes, or can section off virtually any area of the pool to create space for a wide variety of aquatic activity.

Typical Morning Pool Schedule with the Help of an S.R.Smith SwimWall System™



MOVEABLE BULKHEADS

**POOL DIVISION
SUITABLE FOR
FINA SANCTIONED
COMPETITIONS**



The S.R. Smith Bulkhead offers swimming pool flexibility by separating a commercial pool into a variety of separate spaces for various aquatic programs and is used for FINA sanctioned short or long course swimming competitions. The Bulkhead can also be used to define water polo fields and allow officials a walking bridge along the playing field. For day-to-day operation, a Bulkhead provides separate areas for a wide variety of competitive and recreational aquatic activities.

Design and Construction

Constructed with SR Smith's proprietary multi-axial fibre glass laminate schedule, the SR Smith bulkhead is engineered for superior strength to weight ratio, and ease of movement within the pool. The SR Smith bulkhead is manufactured for maximum precision and rigidity.

- Durable fibreglass construction
- Marine grade gel coat for longevity and minimal maintenance
- Custom designed to suit any application
- Myrtha pool compatible
- Anchor mounts to suit any model starting block
- Designed with flow-through grating to reduce wave action
- Accommodates electronic timing systems (Omega, Daktronics and Colorado compatible)
- Flow-through lane line channels, with flip up anchors for shorter lane line configurations
- Anti-slip, UV and chemical resistant TrueTread™ on walking areas
- Easily accessible timing cable tray built-in
- Recessed continuous safety ledge
- Anti-intrusion net available to prevent swimming underneath
- Protective buffers prevent damage to tiles during movement



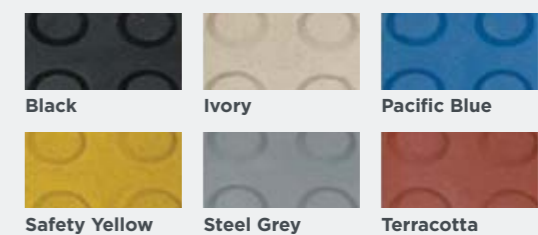
Design and Compliance

The S.R. Smith moveable bulkhead complies with all major international standards including dimensional requirements, markings, horizontal and vertical loading, maximum deflection, walkable surface and safety requirements.

International standards & guidelines:

FINA	FR 2.15
RLS SPO	FD7
European Standard	EN 13451-11
USA Swimming Rule Book	2019
NCAA	Section 3

Top Traction Colour Options



All colour requirements for the body of the bulkhead are matched to customer specifications. Lane targets are made to precise FINA Specifications.

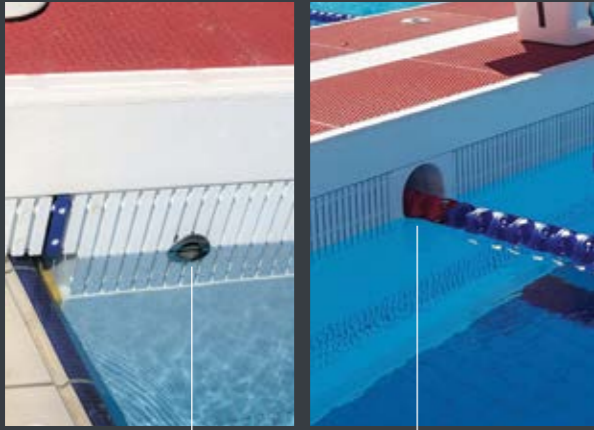
All side walls are produced with textured non-slip surfaces and the top surface is finished with UV and chemical resistant anti-slip TrueTread™.

Warranty

25 year structural warranty with conditions.

Lane Rope Anchoring

Flip Down anchors create flow through channels allowing movement without removing lane lines



Fixed 316 stainless steel cup anchors for outside lanes

Flip Down, Flip Up pivoting anchor:
- 316 stainless steel anchoring plate
- included on both sides

Foot Rest

Full length safety step both sides of boom at 1.2m from waterline. Closed surface with textured edge.



Safety Barrier Option

Flexible vinyl coated nylon reinforced marine barrier.
- square or triangular form factor available

Movement Options

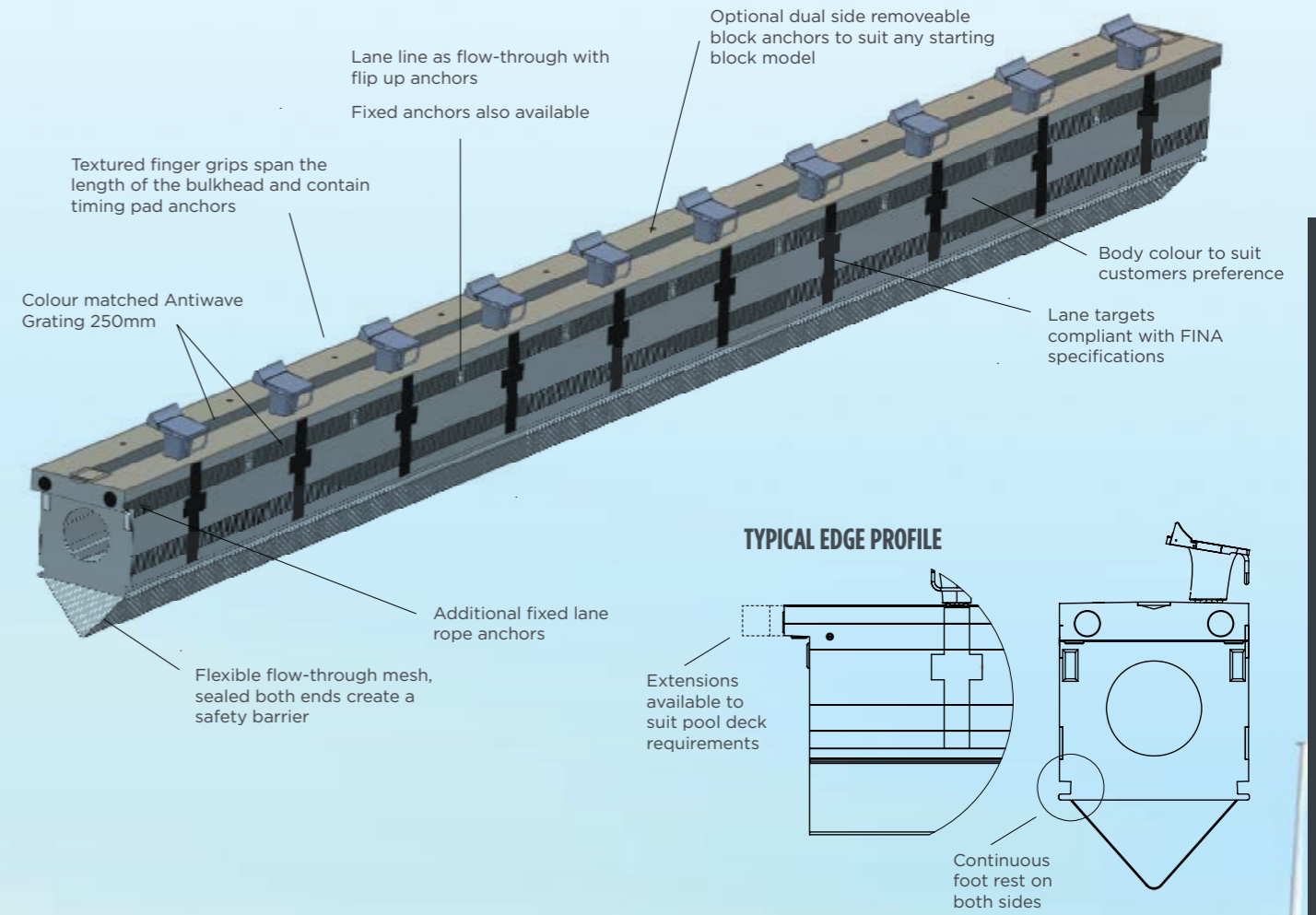


Motorised and manual movement options available

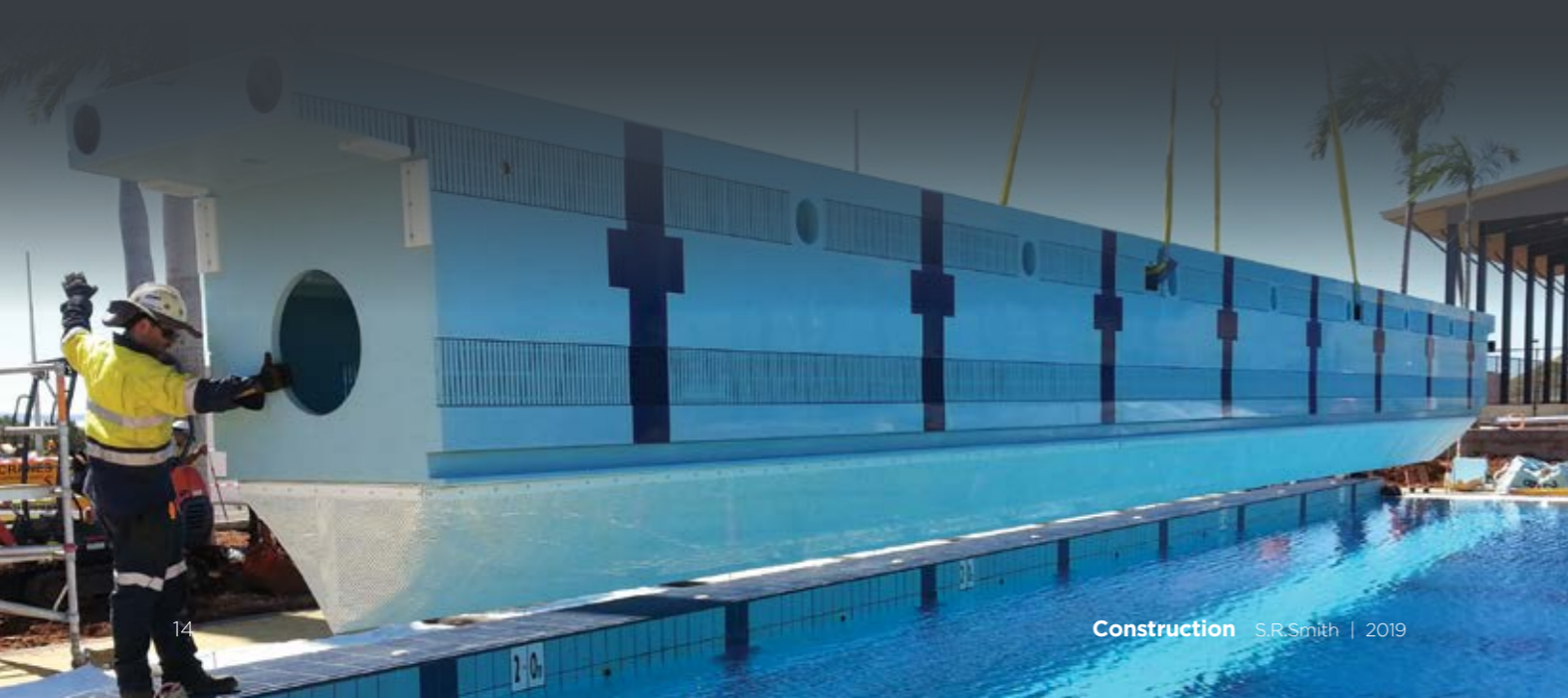


Design and Technical Specifications

Customised and precision engineered for each application, the S.R.Smith Pool Construction team provides a complete solution from design to manufacture, delivery and installation. Our proprietary method of fibreglass manufacturing produces Bulkheads that are exceptionally durable with an exterior that requires minimal maintenance. Attention to every detail in the process ensures a finished product that is precise in size, strength and user-friendly features.



MOVEABLE BULKHEADS



ENDWALLS

MODULAR ENDWALLS FOR OVERFLOW POOLS



Endwalls are designed to provide a safe and efficient means of managing competition and fitness swimming in an overflow or 'wet deck' pool environment. Our advanced and innovative Pultruded FRP EndWall is chemical and UV resistant in even the most demanding facility environments. Precision engineering and production ensure that FINA tolerances are maintained.

Key Features

Suitable for competitive events and normal competition or training. Enables the installation of starting blocks and timing equipment in pools designed with overflow gutters.

- No exposed metal components
- No earthing required
- FINA approved, suitable for competitive events and normal competition or training
- Enables the installation of starting blocks and timing equipment in over flow pool environments
- Gratings on top and sides ensure quick and easy cleaning of the channel with Endwall in place
- Can be used with all popular timing Systems and touch pads including Omega, Daktronics and Colorado
- Simple, modular assembly and installation



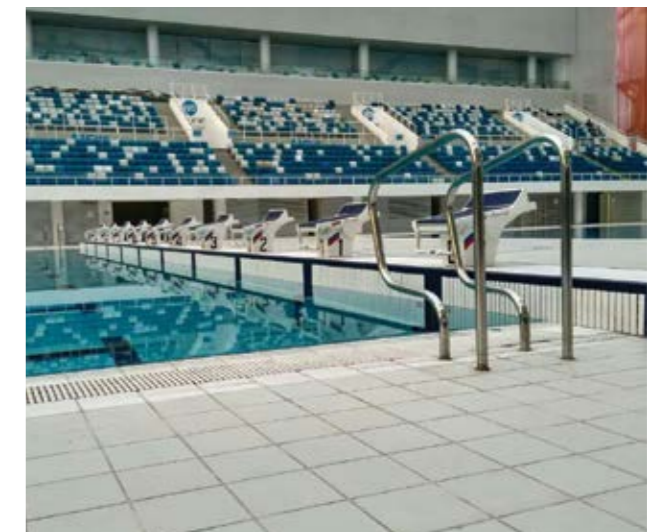
Design and Construction

Constructed from extruded Fiber Reinforced Plastic
Non-slip removable Polypropylene grating
316 stainless steel fixings (internal)
Manufactured using UV inhibitors for outdoor use

Modular section dimensions	2.5m x 1m x 0.3m
Weight per section	100kg
Slip resistance rating	Class B

Warranty

10 years with conditions.



S.R. SMITH'S EXPERIENCED CONSTRUCTION DIVISION TEAM PROVIDE INNOVATIVE POOL PROGRAMMING SOLUTIONS FROM INITIAL CONCEPTS TO FINAL DESIGN, SUPPLY, INSTALLATION AND COMMISSIONING.

INNOVATIVE SWIM WALL ENHANCES POOL EFFICIENCY AND PROGRAMMING AT COCKBURN ARC

Looking to manage its aquatic space more efficiently, in May last year the Cockburn ARC took the decision to install an innovative S.R.Smith SwimWall, a decision that has had a dramatic impact on the pool's efficiency during summer.

With nine water areas, three waterslides, a six court stadium, three group fitness studios and a huge health club space, Cockburn ARC is one of the world's leading aquatic, recreation and sport facilities. With its first year operations seeing a higher than expected demand on the aquatic facility, the management at the Cockburn ARC looked into options to improve the efficiency of the use of space in the pools.

As a result of their investigations, specialists S.R.Smith were contracted to install a SwimWall Systems™ structure in the outdoor 50 metre pool.

S.R.Smith National Sales Manager, Jeremy Smith explains "a swim wall is an inflatable structure that is permanently fixed to the bottom of the 50 metre pool.

"By filling the wall with air, it moves into a vertical position forming a wall that is designed to fit around lane ropes, and splits the pool in half. It only takes a couple of minutes to change the configuration. S.R.Smith SwimWalls can be customised to segment a swimming pool into multiple smaller areas in order to maximise pool space for a variety of aquatic activities."

The installation of the system has allowed Cockburn ARC to configure the 50 metre pool in a number of ways:

- Splitting the pool in half and providing the equivalent of two 25 metre pools
- Inflating the swim wall to just half of the pool so that four lanes remain as 50 metres, and four as 25 metre lanes, and
- Deflating the wall so that the pool remains an all lane 50 metre pool.

Smith added "following the installation Cockburn ARC have been experiencing incredible benefits during the summer months.

"The swim wall has allowed them to accommodate recreation swimmers, inflatables and lap lane swimmers all at the same time. It's also allowed them to have the indoor 25 metre set up more often in the more desirable eight lane configuration which means lane ropes align with the pool markings."

Cockburn ARC which opened in May 2017, was originally designed with a full-sized moveable boom in the original plans which was then removed due to budget constraints. Even when scaled down to a SwimWall built into the pool shell, the structure was then removed from the project entirely.

However, Smith advised "due to the high patronage upon opening, we were asked to install the retro fit SwimWall.

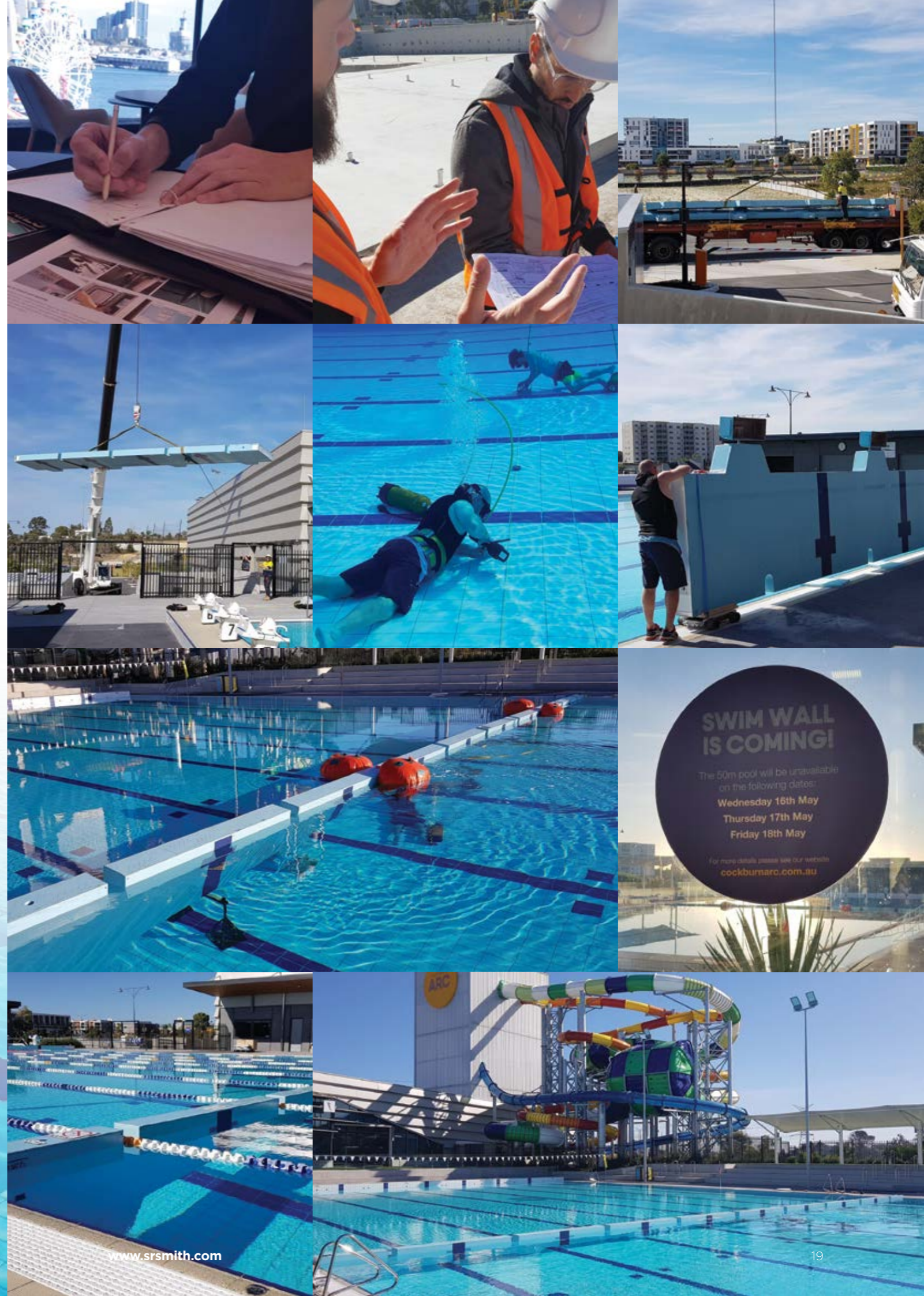
"We completed the project over three days in May with minimal downtime and impact to pool programming."

From a technical viewpoint the S.R. Smith SwimWall is simple, efficient and effective. From the pool deck, air is pumped into the Australian-made SwimWall which causes it to move into a vertical position within seconds. Lane lines can remain in place during the process. A large stainless steel pin secures the SwimWall to a locking mechanism on the pool wall. To lower the wall the pin is retracted, the SwimWall is gently pushed to one side, and air is replaced with water. The SwimWall moves to the pool floor where it remains when not in use.

Smith concludes "S.R.Smith SwimWalls provide unprecedented pool flexibility and thus more revenue options.

"They allow more swimming pool patrons in the pool at the same time. Wall sections can span the entire width of a pool, effectively doubling the number of swim lanes, or can section off virtually any area of the pool to create space for a wide variety of aquatic activity."

AUSTRALASIAN LEISURE MANAGEMENT (FEB 5, 2019)





FLUIDRA

COMMERCIAL POOL SOLUTIONS

FOR ALL YOUR COMMERCIAL POOL NEEDS, CONTACT FLUIDRA

CALL: (07) 3812 2283

E-MAIL: AU.COMMERCIAL@FLUIDRA.COM | WWW.FLUIDRA.COM.AU