



Clear Water Tanks



Concrete

Stock Troughs

Concrete troughs for farm, feedlot or general purpose use with stock health and water quality at the forefront of our design.



ClearWater Troughs ...



Sheep

ClearWater Tanks manufacture general purpose sheep water troughs purpose built for easy installation and management. Our sheep troughs are also suitable for goats, pigs and small herds of cattle.



Cattle

ClearWater Tanks manufacture combined sheep and cattle troughs, as well the deeper, king cattle trough, with a higher storage capacity for larger herds of cattle and thirsty animals.



Horse, Pet & Poultry

ClearWater Tanks manufacture troughs suitable for watering all livestock and animals including horses, goats, pigs, pets and poultry. With water holding capacities ranging from 40 through to 1050 litres ... the choice is Clear!



Feedlot

ClearWater Tanks manufacture water and feed troughs purpose built for feedlots. Our feedlot water trough is designed with stabilising pad and is easy to clean with limited water lost through the cleaning process.



About ClearWater

ClearWater Tanks manufacture a range of concrete water troughs designed for problem-free watering of livestock.

With a vested interest in the Agricultural industry, through farming a property at Manildra NSW ... a lot of research went into the design of the ideal livestock water trough.

ClearWater Tanks understands the importance of a clean and reliable water source for livestock and have implemented a range of features to ensure cool, clean water continues to flow.

Features such as a cement hob to protect external pipework and a float valve chamber large enough to house float and tap are standard.

A lot of consideration went into the design of the ClearWater trough from being a deeper trough than some ... through to the way in which water enters ... keeping water cooler on hot days without overflowing when it's windy.

Anyone who has purchased a ClearWater trough hasn't just purchased one ... they've come back for others.

For this reason, we've introduced small, double and feedlot troughs to our range to accommodate all livestock and farming enterprises.



The choice is Clear ...

ClearWater Troughs ...

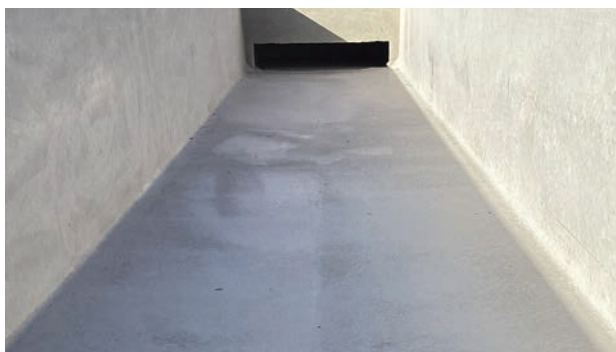
Are designed for problem-free watering of livestock and animals with a range of options available to suit any agribusiness.



Cement Hob



Float Valve Chamber with 2" Inlet



Dished Floor



Recessed Drain & Bung

Water trough features ...

- Tamper proof design
- Enclosed float valve chamber
- Easy access to float valve
- Rear hob for easy installation and protection of external plumbing
- 2" inlet
- Concrete lid
- 4" outlet
- 40MPA reinforced vibrated concrete
- 10 year guarantee on workmanship
- Optional high or low pressure float valves (not included in trough price)
- Delivery and paddock drops can be arranged depending on location

TROUGH OPTIONS

DESCRIPTION

Float 1½" High Pressure

Float 1" High Pressure

Stock Master Float 1½" High Pressure

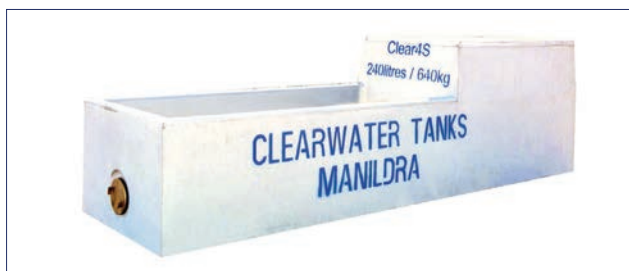
Float 1½" Low Pressure

Float 1" Low Pressure

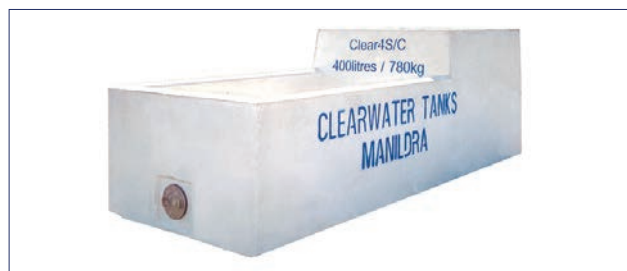
Hansen Max-Flo

M & F Ball Valve - 1½"

Sheep & Cattle Water Troughs ...



CLEAR4S



CLEAR4SC

4FT WATER TROUGHS

CODE	DESCRIPTION	CAPACITY litres	LENGTH mm	WIDTH mm	HEIGHT mm	WEIGHT kg	INLET inch
CLEAR4S	Sheep	240	2000	600	380	640	2"
CLEAR4SC	Sheep & Cattle	400	2000	750	460	780	2"



CLEARFLS8



CLEAR8SS



CLEAR8S



CLEAR8SC



CLEAR8KC

8FT WATER TROUGHS

CODE	DESCRIPTION	CAPACITY litres	LENGTH mm	WIDTH mm	HEIGHT mm	WEIGHT kg	INLET inch
CLEARFLS8	Feedlot	120	3000	1200	300	1175	2"
CLEAR8SS	Sheep + Stabilising Pad	420	3200	1500	380	1400	2"
CLEAR8S	Sheep	420	3200	600	380	900	2"
CLEAR8SC	Sheep & Cattle	620	3200	750	460	1100	2"
CLEAR8KC	King Cattle	850	3200	750	580	1350	2"

Sheep & Cattle Water Troughs ...



CLEAR16S

****NEW****



CLEAR16SC



CLEAR16DSC

16FT WATER TROUGHS

CODE	DESCRIPTION	CAPACITY litres	LENGTH mm	WIDTH mm	HEIGHT mm	WEIGHT kg	INLET inch
CLEAR16S	Sheep	700	5600	600	380	1420	2"
CLEAR16SC	Sheep & Cattle	1100	5600	750	460	1800	2"
CLEAR16DSC	Double Sheep & Cattle	1050	5450	710	430	1600	2"

Horse, Pet & Poultry Water Troughs ...



CLEARPP



CLEARH

WATER TROUGHS

CODE	DESCRIPTION	CAPACITY litres	LENGTH mm	WIDTH mm	HEIGHT mm	WEIGHT kg	INLET inch
CLEARPP	Pet & Poultry	40	800	400	250	110	1"
CLEARH	Round Horse	500	1400	1150	800	900	2"

Feed Troughs ...



Sheep Feed Trough with optional Fenceline Rail | CLEARFLBS8F



CLEARFLBS8



CLEARFLBS8F



CLEARFLBC8



CLEARFLBC8

FEED TROUGHS

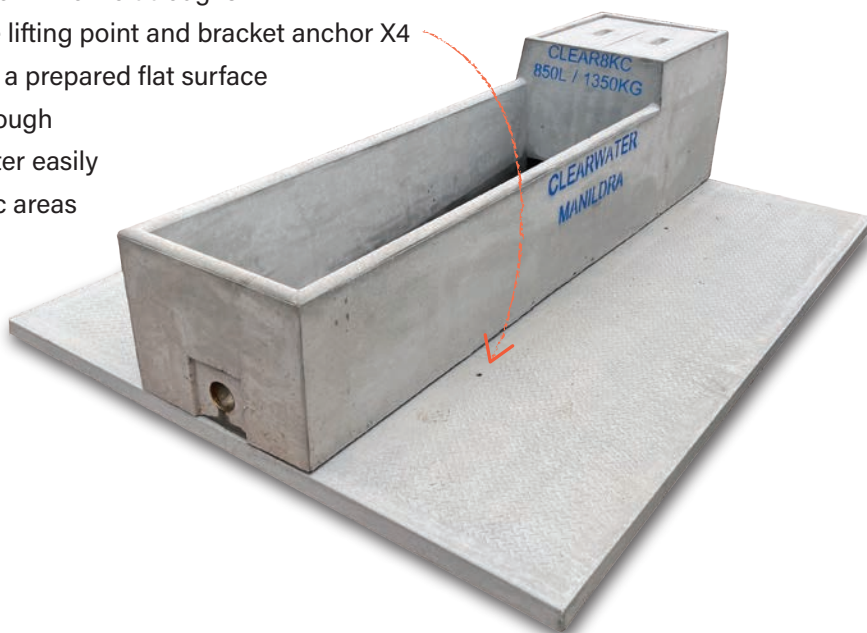
CODE	DESCRIPTION	LENGTH mm	WIDTH mm	HEIGHT Back mm	HEIGHT Front mm	WEIGHT kg
CLEARFLBS8	Sheep Feed	3000	490	500	340	750
CLEARFLBS8F	Sheep Feed with Fenceline Rails	3000	490			
CLEARFLBC8	Cattle Feed	3000	800	700	500	1300

****NEW** CLEARPAD | 3m Precast Trough Pad**

The choice is Clear ...

- Reinforced concrete precast trough pad
- Supports troughs up to 8ft long or X2 for 16ft troughs
- Cast-in threaded inserts provide lifting point and bracket anchor X4
- Easy to install ... simply place on a prepared flat surface
- Prevents erosion around your trough
- Allows young stock to reach water easily
- Great for soft soil and high traffic areas

Length 3 metres
Width 2.4 metres
Thickness 85 mm



The choice is Clear ...

Please get in touch ...

1800 647 756

www.clearwatertanks.net.au

info@clearwatertanks.net.au



ClearWater Tanks