



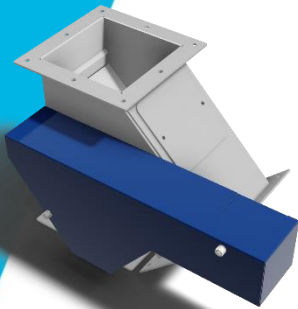
KOTZUR



GRAIN VALVES

The Kotzur Bulk Solids Handling valves control flow of grain via different paths.

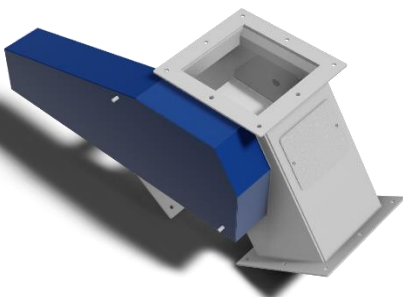
FLAP VALVE



- Pneumatic, electric or manual operation
- 45°/55° outlet angle,
- Available in equal, offset and three way versions,
- Inspection covers,
- Removable flap plate,
- Lining option,
- ISO VDMA Pneumatics with reed switch for PLC feedback to confirm open or closed position,

Models
150 x 150
200 x 200
250 x 250
300 x 300
350 x 250

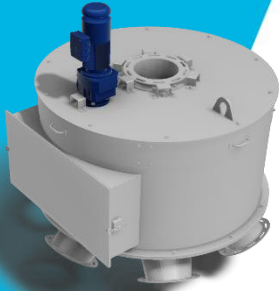
PAN VALVE



- Pneumatic, electric or manual operation ,
- 45°/55° outlet angle,
- Inspection covers,
- Removable pan,
- Lining option,
- ISO VDMA Pneumatics with reed switch for PLC feedback to confirm open or closed position,
- Optional square to round inlet and outlets.

Models
150 x 150
200 x 200
250 x 250
300 x 300
350 x 250

ROTARY DISTRIBUTOR VALVE

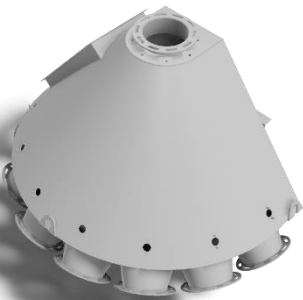


- Electric operation,
- 360° of continuous operation,
- 45°/55° grain flow angle,
- Inspection covers,
- Removable internal elbow and outlets,
- Lining option,
- Mechanically Indexed with proximity sensors for PLC integration,
- Available in 4, 6, 8 & 10 outlets.

Models

Ø168
Ø219
Ø273
Ø324
Ø356

FLATBACK DISTRIBUTOR VALVE

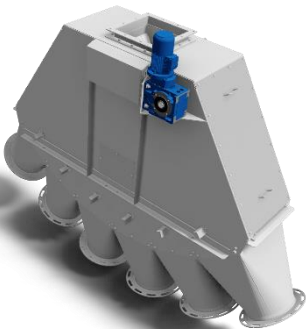


- Manually indexed from ground level,
- 180° of operation,
- 45°/55° grain flow angle,
- Inspection covers,
- Removable internal elbows and outlets
- Lining option,
- Optional proximity sensors for control panel Display or PLC integration,
- Available in 4, 6, & 8 outlets

Models

Ø168
Ø219
Ø273
Ø324
Ø356

PENDULUM DISTRIBUTOR VALVE

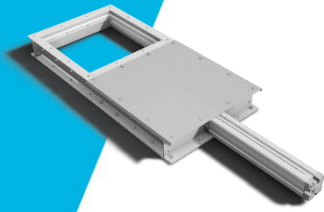


- Electrically controlled,
- Inspection covers,
- Removable internal elbows and outlets,
- Standard tile lined to increase life span,
- Electrically indexed utilizing proximity sensors for PLC integration,
- Available in multiple outlets,
- Available in single and dual inlets.

Models

Ø356
Ø408

STANDARD SLIDE GATE

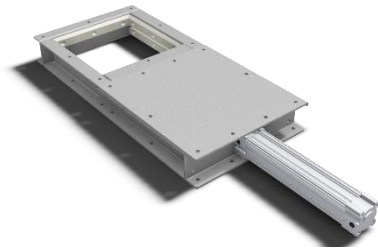


- Pneumatic, electric or manual operation,
- Suit in-spout applications,
- UHMW guided slide for low friction sliding and close tolerances to reduce leakage,
- Pneumatics with reed switch for PLC feedback to confirm open or closed position.

Models

230 x 230
250 x 250
280 x 280
300 x 300
330 x 330
350 x 350
380 x 380
400 x 400
430 x 430
450 x 450
500 x 500

SILO SLIDE GATE

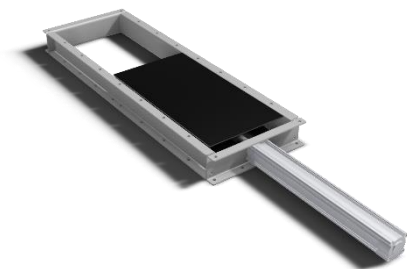


- Pneumatic or manual operation,
- Larger pneumatics and thicker slide to suit stored material loading,
- Suit under silo, hopper or bin applications,
- UHMW guided slide for low friction sliding and close tolerances to reduce leakage,
- Pneumatics with reed switch for PLC feedback to confirm open or closed position.

Models

300 x 300
350 x 350
400 x 400
450 x 450
500 x 500
550 x 550
600 x 600

CONVEYOR SLIDE GATE

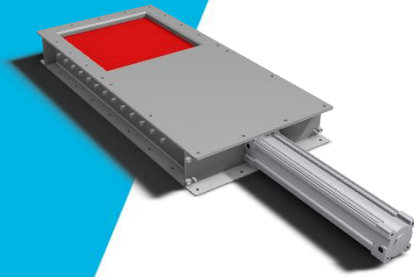


- Pneumatic, electric or manual operation,
- Rectangular inlets to increase material carry over in conveyor,
- Top mounted slide plate to minimise material cross contamination in conveyor,
- UHMW guided slide for low friction sliding and close tolerances to reduce leakage,
- Pneumatics with reed switch for PLC feedback to confirm open or closed position.

Models

230 x 345
280 x 420
330 x 550
380 x 570
430 x 650

SEALING SLIDE GATE



- Pneumatic operation,
- Suit connection to equipment connected to a sealed silo used for fumigation
- Pneumatics with reed switch for PLC feedback to confirm open or closed position prior to fumigation preventing loss of fumigants.

Models

350 x 350
380 x 600
500 x 500
600 x 600