



# Barka Parka

BEAN BEDS FOR PETS



CUSTOM MADE FOR YOUR PET  
AND YOUR DECOR



- Long-lasting
- Easy to wash
- No Odour
- Claw proof
- Stylish décor colours and piping
- 2 year guarantee

[www.barkaparka.com.au](http://www.barkaparka.com.au)

**Our Design is unique and so practical!**

The **Barka Parka** bean pet bed is a unique design created by genuine pet lovers. It was "born" out of necessity. As they say "Necessity is the mother of invention". Simon's mother, Marion, had a Labrador, Lucas, who by the age of 11 months, had outgrown his basket - the biggest available - and she had trouble finding a substitute. Nothing that could be bought seemed to fit the bill - or the dog! - so with her sister Janet, she concluded that the only solution was to make a bed. That pet bed was made in 1976 and 30 years later it is STILL in daily use by their fifth generation Labrador, Sorrell.

In making that bed they created an entirely new concept in pet beds. The **Barka Parka** bean bed is truly comfortable, long lasting, easy to keep clean and stylish enough to grace any room in the house.

**The design is simple!**



1. Inner bed

2. Slip-cover

Each pet bed set consists of two pieces:

1. **Inner bed.**  
This contains polystyrene beans and acts as a "mattress".
2. **Slip-cover.**  
This acts just like a fitted bed sheet. Easy to remove. Easy to wash.



The Inner bed goes inside the Slip-cover Turn the bed over, grab and DROP!

**Round shape**

A round pet bed is the best shape. It spreads your pet's weight evenly creating a proper supporting wall, whichever way they want to lie - curled up, stretched out, on their back .....

A round bed ensures the bean filling distributes evenly to make a "nest" or "basket" effect with no corners to chew! With square, rectangular beds or "human" pear-shaped beds the beans run down to one end or collect in the corners making it very uneven, uncomfortable and tempting corners to chew!

**Bean filling**

Beans are best as they mould to your pet's shape. Your pet can poke, pad and prod to make a nest just right for them. Then snuggle down in pure comfort with maximum support.

We use only virgin polystyrene beans that are of a uniform ROUND shape and size. The round uniform shape means they can shift around each other better, when your pet "nests" in the bean bed. Virgin beads are also more dense than reground, so it doesn't crumble or go flat as fast.



**Fabric**

We use a premium quality poly/cotton twill for both the Inner bed and the Slip-covers. Its close weave and superior quality resists claw damage (even cats) and prevents dirt and hairs penetrating into the bean filling. **NO ODOUR. NO FLEAS.** We GUARANTEE IT!

The fabric has a crease resistant and crease recovery finish which helps maintain the garment's overall smartness and appearance.

Fully machine washable. Fade resistant. It is easy to vacuum or brush hair off between washes.

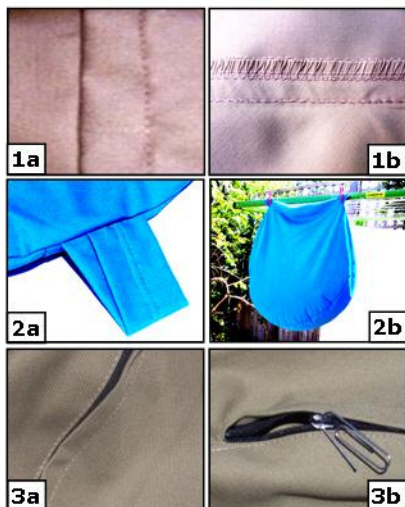
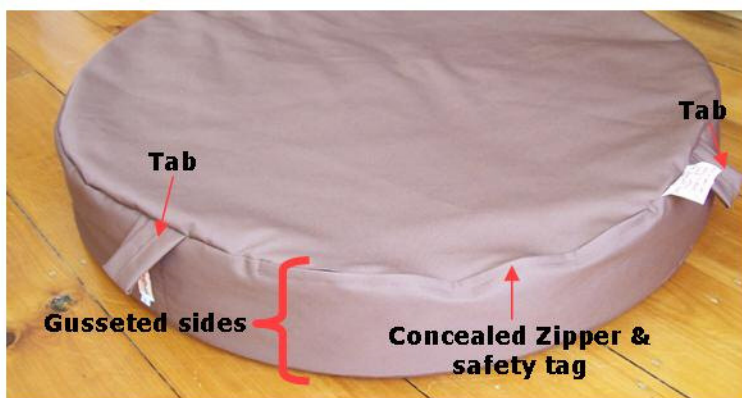
Extremely durable and hardwearing, yet so comfortable. It is used by both the army for their uniforms and companies for their corporate wear. The original Barka Parka made in 1976 by Janet and Marion is still being used now by their fifth generation Labrador, Sorrell.



### The Inner bed acts like a mattress

The Inner bed is an integral part of the bed. Filled with polystyrene beans, it acts just like a mattress providing your pet with maximum support and all-year round comfort.

The sides are gusseted to maintain the bed's shape and depth. Its ROUND shape creates a nest effect and the beans are distributed evenly within the Inner. The Slip-cover then fits easily over the Inner to keep it clean, just like a fitted sheet on your own mattress.



**Reinforced seams** are either double-sewn (French seams) Fig 1a or triple over locked Fig 1b for extra strength and durability.

#### Tabs

Tabs, Fig 2a are sewn either side of the zipper opening. Tabs make it easy for you to hang the Inner on the line to give it an airing. Fig 2b

#### Concealed Zipper and Safety tag

Zipper for easy bean top-ups and refills. Fig 3a The zipper tag has been removed, as required by law, to prevent inhaling or swallowing the beans especially by children. Just use a paper-clip if you need to open the zip. Fig. 3b One less item that your pet will find and chew.

### The Slip-cover is elasticated like a fitted bed sheet.



Easy to remove! Easy to wash! Easy to replace! So you do!!!  
Simplicity itself! No zips or poppers to struggle with.



The design of our washable pet bed Slip-cover is unique to **Barka Parka**. The "light-bulb" idea actually came to Janet (one of the original founders of Barka Parka) when her sister Marion was in the laundry complaining about struggling with the poppers on their pet bed cover. At the same time Janet was putting a fitted sheet on her own bed and "ding" ..... That's it! A "fitted cover. So simple, so practical, so elegant!

The Slip-cover is to be used in conjunction with the Inner bed. Choose from a range of different styles: Standard, Delux or Snug. Choose from a wide range of fabric colours and piping

### Care Instructions:

Just throw it in the wash on normal wash cycle and hang to dry or tumble dry. Dries in no time.

No need to iron. The fabric has a crease resistant and crease recovery finish which helps maintain the garment's overall smartness and appearance.

Made of poly/cotton twill - durable, fade resistant and won't shrink.

Regular washing of the slip-cover keeps the Inner bed clean and prevents the build-up of unpleasant smells and flea infestation. **WE GUARANTEE IT!**



Easy to remove



Easy to Wash



Easy to Dry

**Standard set - includes a filled Inner & Slip-cover**

Choose a single fabric colour or a combination of top and side colours to match your pet bed to your décor.

Also available as a **Super set**.

**Delux set - includes a filled Inner & Slip-cover with piping.**

Piping is featured around the top edge of the Slip-cover. Adding Piping enhances the décor aspect of the pet bed.

Choose a single colour fabric or a combination of top and side colours plus piping to match your décor or pet.

Also available as a **Super set**.

**Snug set - includes a filled Inner & "pouch" Slip-cover**

Ideal for pets who love to sleep or hide under a cover for extra warmth or security.

The cover has a "pouch-like" extra layer so your pet can easily crawl in and "snuggle".

The "pouch" opening is edged with a contrasting coloured trim.

Also available as a **Delux** and **Super set**.

**Super sets - includes a filled Inner & 2 Slip-covers**

Two Slip-covers gives you to a spare Slip-cover so that your pet can still use the bed whilst the other cover is in the wash. Just like you do with your own bed linen.

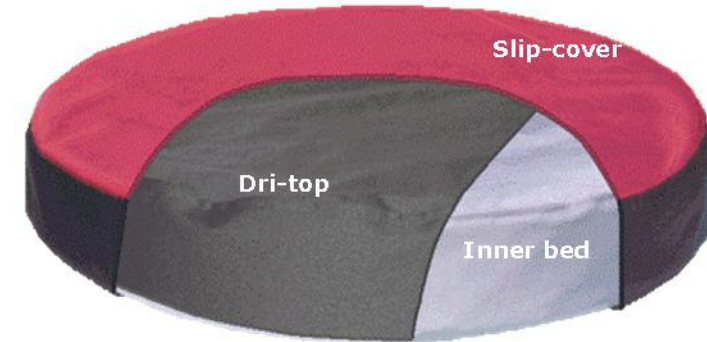
Having both Slip-covers made at the same time means we can give you a 20% discount on the second cover.

Select the same colours or different colours for each Slip-cover for variety.

Choose **Standard**, **Delux** or **Snug** Style

**The Dri-top pet bed protector is unique to Barka Parka**

The **Dri-top** is primarily designed for elderly dogs suffering from incontinence or bitches in season to prevent "nasty" liquids penetrating and contaminating the Inner bean filling. It is custom made to fit over the Inner's top and sides creating a protective barrier.



Cross section showing how the **Dri-top** sits between the Slip-Cover and Inner bed

**Benefits:**

Eliminates the need to constantly empty the beans out and wash the Inner bed.  
Eliminates the need to constantly replace the contaminated bean filling.  
Prevents nasty smells and contamination of the bean filling and inner bed.  
Easy to remove. Easy to Clean.  
The Slip-cover goes over the **Dri-top** so the pet bed remains comfy and attractive.

**Fabric:** Polyurethane-coated Nylon. Sample attached.

**Washing:**

Only wipe with a damp cloth and a mild detergent or rinse by hand under warm water.  
Drip-dry in shade to dry.  
Machine washing and spin-drying will destroy the waterproof coating.  
Do not use disinfectant or bleach.

**General Care:**

We recommend that the **Dri-top** only be used when absolutely necessary. It may cause condensation build-up and smells if left on continuously.  
Air the Inner bed on a regular basis (by hanging it outside using the tabs) to prevent condensation build-up.

**Colours:** Black only.

**Please note:**

A **Dri-top** is not necessary if your dog just comes in damp from swimming or the rain or "sprays" slightly, as the Slip-cover will more than adequately absorb small amounts of moisture. For your pet's health we recommend you use a synthetic chamois to dry your pet to remove excess moisture before allowing them to go on their pet bed.

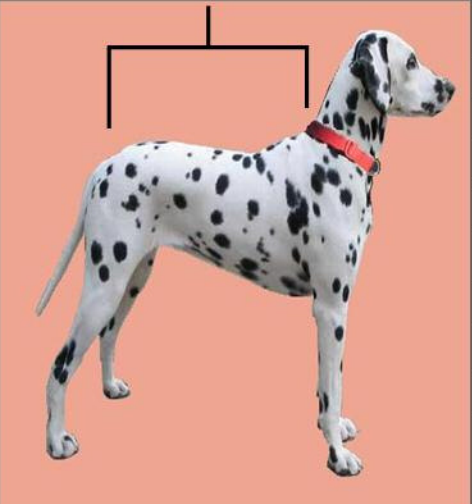
### Custom fitting the ideal size Pet Bed

Each pet is an individual with particular needs and sleeping preferences just like us. They also need and deserve a bed that gives them full support and lifetime comfort. As humans we automatically choose our beds carefully to suit our body size and particular sleeping habits.

Why should choosing a pet bed for your pet be any different?

Follow these easy steps to choose the perfect bed size for your pet

1. Measure your pet's length as in fig 1 and refer to the **Length** column below.
2. Weigh your dog and refer to the **Weight** column below.
3. Cross check the **Weight** and **Length** to the **Size** column.

Tail to Collar = <b>LENGTH</b>	Body <b>Length</b>	Bed <b>Size</b>	Body <b>Weight</b>
	16cm	25	Up to 5kg
	17 - 28	30	6 to 9
	29 - 41	35	10 to 16
	42 - 54	40	17 to 23
	53 - 66	45	24 to 36
	67 - 79	50	37 to 43
	67 - 79	50+	Over 44kg
	80 - 92	55	44 to 49
	80 - 92	55+	Over 50kg
	93 - 99	58	50 to 55
	Over 99	58Plus	Over 55

? If you get different answers then the **LARGEST** is the appropriate sized pet bed for your dog.

? If in doubt, check your answer against the list of Recommended Pet Bed Sizes for your pet breed overleaf or contact us by phone or email us

**Rule of thumb:** **BIG IS USUALLY BETTER THAN SMALLER** as the bed will provide better support for your pet and enable them to fully stretch out in comfort. Plus!! the beans will last longer thus saving you money on future top-ups!

**Please note** that this is a **general guide only**. Your pet is an individual and may differ in size to its average breed size. We recommend that you always weigh and measure your pet to ensure they are fitted with their **IDEAL** sized pet bed.

BREED	BED SIZE	BREED	BED SIZE	BREED	BED SIZE
AFGHAN HOUND	50	ELKHOUND	45	PAPILLON	25
AIREDALE TERRIER	45	ENGLISH BULL TERRIER	40	PEKINGESE	30
AKITA	50	ENGLISH SETTER	50	POINTER	45
ALSATIAN	50	FIELD SPANIEL	35/40	POMERANIAN	25
BASSET HOUND	45	FLAT COATED RETRIEVER	45	POODLE - TOY	25
BEAGLE	35	FOX TERRIER	30	- MINIATURE	30
BEARDED COLLIE	40	GERMAN SHEPHERD	50	- STANDARD	45
BEDLINGTON TERRIER	35	GERMAN POINTER	45	PUG	30
BELGIAN SHEPHERD	45	GOLDEN RETRIEVER	50	PYRENEAN MOUNTAIN	55/58
BERNESE	55/58	GORDON SETTER	50	RHODESIAN RIDGEBACK	50
BICHON FRISE	30	GREAT DANE	55/58	ROTTWEILER	50
BLOODHOUND	50/55	GREYHOUND	45	ROUGH COLLIE	45
BORDER COLLIE	40	HUNGARIAN VISZLA	45	ST BERNARD	55/58
BORDER TERRIER	30	IRISH SETTER	45	SALUKI	40
BORZOI	50	IRISH WATER SPANIEL	40/45	SAMOYED	40
BOXER	45	IRISH WOLFHOUND	55/58	SCHNAUZER- MINIATURE	30
BULLDOG	45	ITALIAN SPINONE	45/50	- STANDARD	40
BULL MASTIFF	55/58	ITALIAN GREYHOUND	30	- GIANT	50
CAIRN TERRIER	30	JACK RUSSELL TERRIER	30	SCOTTISH TERRIER	30
CATS	25	KEESHOND	40	SHAR PEI	40
CAVALIER KING		LABRADOR RETRIEVER	45	SHETLAND SHEEPDOG	35
CHARLES SPANIEL	30	LAKELAND TERRIER	30	SHIH TZU	30
CHIHUAHUA	25	LHASA APSO	30	SPRINGER SPANIEL	40
CHOW CHOW	40/45	LARGE MUNSTERLANDER	45	STAFFORDSHIRE	
CLUMBER SPANIEL	45	LEONBERGER	55/58	BULL TERRIER	40
COCKER SPANIEL	35	LURCHER	45	SUSSEX SPANIEL	40/45
CORGI	35	MALTESE	30	TIBETAN SPANIEL	30
CURLY COATED RE-	50	MAREMMA SHEEPDOG	45/50	TIBETAN TERRIER	35
DACHSHUND	30	NEWFOUNDLAND	55/58	WEIMARANER	50
DALMATIAN	45	NORFOLK TERRIER	30	WEST HIGHLAND WHITE	30
DEERHOUND	50	NORWICH TERRIER	30	WHIPPET	35
DOBERMANN	45	OLD ENGLISH SHEEPDOG	50	YORKSHIRE TERRIER	25

## Furniture covers protect your upholstery and bed linen.



Does your pet like to sleep on your bed, the couch or a special armchair? As much as you love your pet, are you tired of your prized sofa or bed linen being spoilt by claw damage, "doggy" smells and hairs that stick to the fabric? Embarrassed by old sheets draped over furniture spoiling the look of your home?

Co-ordinate furniture covers and your pet bed to match your décor .

Prevents your upholstery and doona from smells, hairs and claw damage.

Prevents dirt and hairs penetrating into your upholstery or doona filling.

Improve the look and durability of your upholstery and bed linen.

Easy to remove. Easy to wash. Hairs won't stick to the fabric. Just brush it with an ordinary clothes brush, vacuum or take it outside and give it a shake. Easy!

**Prices:** P.O.A. As each cover is custom made to individual specifications prices will be on a quote only basis. Just fax or email us with a diagram and measurements or call us to discuss your idea.

The original sofa cover was designed by Annie and Dozer's mum, Joanna who writes:

*"I'm glad you like my idea. I normally have a sheet on the couch, but it really does look ugly. I thought if I am getting this lovely bed for them the only thing left in the room that I am unhappy about is the cover on the couch – my house will look nice again!! "* Joanna VIC



Before

After

## Pet Bed sets

Filled bed sets	25	30	35	40	45	50	50+ *	55*	55+ *	58*	58+ *
Standard set	\$95	\$116	\$144	\$172	\$205	\$240	\$287	\$287	\$313	\$313	\$357
Super Standard set	127	155	191	227	270	315	365	365	398	398	453
Delux set	106	129	161	191	227	265	314	314	342	342	397
Super Delux set	149	181	226	265	314	364	420	420	455	455	510
Snug set	109	134	166	196	234	272	324	324	352	352	371
Super Snug set	154	187	233	272	324	375	432	432	468	468	495
Delux Snug set	120	158	183	215	256	297	352	352	402	402	411
Super Delux Snug set	176	213	268	310	368	423	487	487	525	525	555

**\* Please note:** Due to their large size, **Sizes 55 to 58+** destined for Interstate and outside Metro Melbourne can only be sent as **Fill-it-yourself sets** or **collect directly from us**

Fill-it-yourself sets	25	30	35	40	45	50	50+	55	55+	58	58+
Standard set	90	107	130	152	179	206	243	243	261	261	279
Super Standard set	122	146	178	201	244	281	320	320	345	345	374
Delux set	101	121	148	171	201	231	270	270	289	289	305
Super Delux set	144	174	213	238	288	330	372	372	400	400	429
Snug set	104	125	152	176	207	237	280	280	297	297	315
Super Snug set	148	180	219	245	296	339	384	384	412	412	441
Delux Snug set	115	138	170	195	228	257	308	308	325	325	342
Super Delux Snug set	170	204	255	283	342	389	442	442	473	473	496

## Other products

Spare Slip-covers	25	30	35	40	45	50	50+	55	55+	58	58+
Standard Slip-cover	39	48	58	68	80	92	96	96	104	104	110
Delux Slip-cover	50	61	75	86	102	116	124	124	133	133	140
Snug Slip-cover	51	63	78	89	105	119	127	127	137	137	145
Delux Snug Slip-cover	62	77	95	107	127	144	155	155	166	166	176

Dri-top protector	33	38	46	53	63	73	77	77	82	82	88
-------------------	----	----	----	----	----	----	----	----	----	----	----

Furniture covers	Price on application. Refer Furniture cover page										
------------------	--	--	--	--	--	--	--	--	--	--	--

## Postage & Packaging

Delivery costs vary with weight and destination. For specific costs go to our postage calculator at [http://barkaparka.com.au/index\\_files/Delivery\\_info.htm](http://barkaparka.com.au/index_files/Delivery_info.htm) or phone us and we will give you a quote.



We are proudly celebrating 37 YEARS!  
The original **Barka Parka** made in 1976  
is still in daily use today!  
Possibly the oldest surviving pet bed in the World!



If you have any further queries contact us by:

**Phone**

Phone: 03 9016 3394

Mob: 0405 280 069

**E-mail**

[enquiries@barkaparka.com.au](mailto:enquiries@barkaparka.com.au)

**Mail**

Simon and Kara Duncan  
1100 Stud Road  
ROWVILLE VIC 3178

**Website**

[www.barkaparka.com.au](http://www.barkaparka.com.au)