



TempReport® System



Wireless monitoring system based on T-TEC data loggers and the TempReport software.

Temperature Technology

263 Gilbert Street, Adelaide SA 5000 Australia

t-tec.com.au sales@t-tec.com.au

P: +61 (0)8 8231 1266 F: +61 (0)8231 1212

TempReport®

TempReport is the modern, convenient way to log, view and store data. The data loggers stay where they are monitoring temperature. They transmit the actual temperatures, alarms and files, automatically and on demand. Now the monitoring is active. Gone are the days when data loggers had to be collected, hooked up by cable for download and then put back in place.

Two-way communication happens between the PC and the loggers via the Gateway. All data arrive at the PC and all loggers are operated from there.

When the PC is turned on in the morning, the actual temperatures will start to arrive in turn. A data logger in alarm will appear in red. When the program runs in the background, a notification with alarm message will appear on the screen. Temperature updates keep coming as programmed.

TempReport System

	S/N	Name / Location	Status	1	2	3	Last updated
Check Gateway	44	Igloo/Calibration. Started 29.9.15	logging	T 25.3°C	H 36.0%		27 minutes ago
Refresh All	47	Outside - old battery	logging	T 30.1°C	H 41.1%		4 hours ago
Add New Logger	71	Old h/w rev 2.5 / 2.33	logging	T 23.5°C			16 minutes ago
Remove Logger	106	Glass counter	logging	T 23.7°C			56 minutes ago
Reset Relay	128	Glass counter	logging	T 23.6°C	H 40.7%		1 hours ago
Settings	173	Fridge+Freezer, s/w 3.0.2	logging	T 27.0°C	T 27.0°C		1 minutes ago
Help	183	RF183 61E Gasbox New Batt 30.11.15	logging	T 30.4°C			2 hours ago
About	189	Bat 15.11 Calibration 6.1.1 Chem.Anal.	logging	T 59.2°C			5 minutes ago
Exit	290	C290 No Antenna 8.12.15 Enterix	logging	T 25.6°C	H 35.5%		4 minutes ago

Information: Logger #106 (Glass counter)

Logger 106 is logging
 Started at 27/10/2015 10:06:49 AM
 Wrap around is enabled
 Automatic update every 2 Hours.
 Automatic download is off.
 19873 temperature logs / 5 Min
 Battery: 3.34 V

Refresh this logger only

12%

Gateway connected.

Highlighting a data logger lets the user see the location, the sensor number and types, the frequency of the logging, the automatic update and file download schedule, the battery voltage and the firmware version. Refresh calls for the actual temperature.

1. Using the left side buttons, the logging can be started and stopped, and the file can be downloaded
2. Alarms can be stopped and changed. Automatic updates and downloads and be set or changed.
3. Security can be set for each logger according to the requirements: Access may be limited for some users, and the loggers can be protected from outsider access.
4. Downloaded files can be viewed in 'View Logs'. The chosen file will appear as a graph in the Graphviewer, with facilities for zoom and plot, printing and saving for spreadsheet programs.

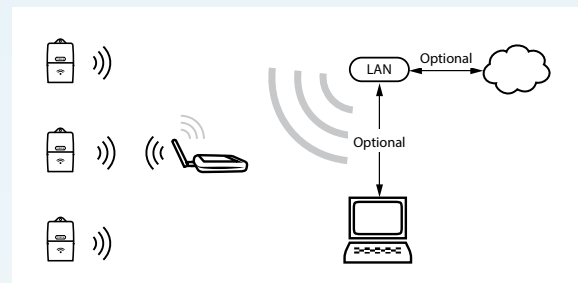
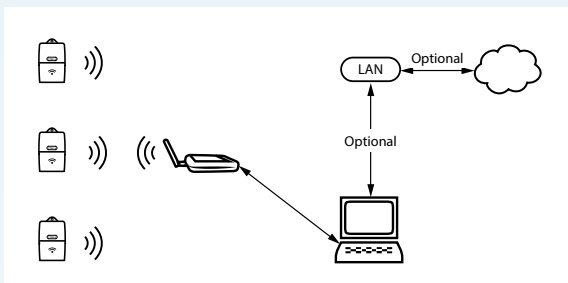
Configuration possibilities

T-TEC RF data loggers communicate wirelessly to a Gateway, within 300 meters clear line of sight. The distance between the Gateway and the computer can be extended by connecting a Gateway to a LAN. A computer connected to the same LAN can detect and share that Gateway, or the Gateway can send the data to a server (either in house or on the Internet) to store and distribute the data. A limitless number of computers can access that server and download the data.

The T-TEC RF data logger system is scalable: data loggers can be easily added, either locally or remotely. Up to 50 data loggers can communicate with one Gateway.

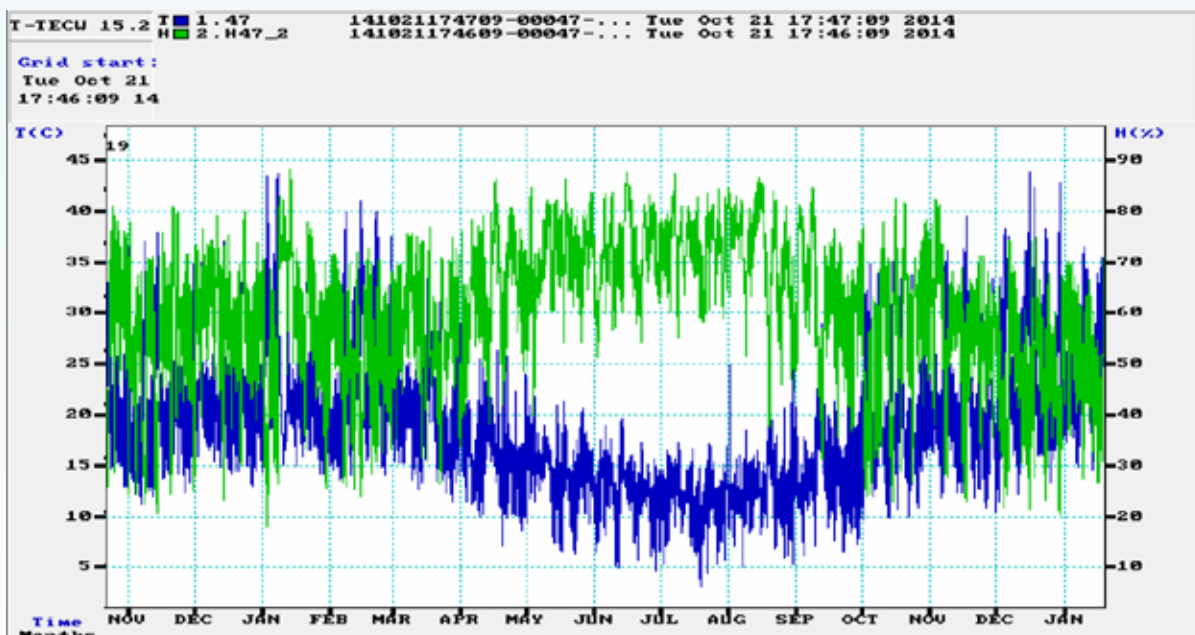
One or many T-TEC RF data loggers can communicate via:

- a single Gateway connected to a single computer via USB.
- many Gateways each connected to a different computer via USB.
- one Gateway with WiFi connected to the LAN serving one or many computers.
- one Gateway with WiFi connected to the LAN sending data via the Internet (no computers).



Access Control

The logger communication is protected in several ways: All communication is encrypted, so that no interference is possible. Typically the administrator or IT department can make sure that the data logger files are safe. Domain may be set, so that neighbours, who may be within range, cannot read each others' loggers. Passwords to grant limited access may be set: For example: Specific departments can have access to their own readings, but the administrator reserves the rights to change the set-up of the logging: Naming, starting / stopping / changing alarms.



Outdoor temperature and humidity in Adelaide – from wireless T-TEC logger in wrap-around mode. The file has 1.3 million logs, collected in the database.



Data logger specifications

Temperature accuracy	± 0.2°C or better
Humidity accuracy	± 3% or better
Time accuracy	± 1 sec / day
Resolution	0.1°C or better
Casing	Polycarbonate
IP rating	68 watertight
Size (mm)	65 × 31 × 106
Weight	115g
Ambient	-40 + 85°C
Display	Optional
Battery	½ AA, 3.6V
Battery lifetime	1 year, normal use, use replaceable
Memory	100, 000 + logs (typically)
Logging interval	User adjustable: 1 second to 6 hours
Display of actual temp	Available on T-TEC 7 RF
Remote sensor	Many options available
Wall bracket	Stainless steel optional
Interface	Gateway
Signal	433 MHz
Range	350m free air
Antenna	Internal/external optional
Security	Signal encryption and access control
ID	Permanent serial number
Warranty	2 years

T-TEC Wireless data loggers

9 good reasons to choose TempReport®

1. The data loggers stay where they are installed.
2. The system is near real time.
3. Loggers can be accessed any time.
4. Updates happen automatically.
5. Files are downloaded at set intervals.
6. Alarms are sent ASAP.
7. Optional relay output from Gateway.
8. Files are continuous, new logs add to file.
9. Database in house or in the cloud if preferred.

T-TEC wireless data loggers are available in a range of models, suitable for many applications and temperature ranges:

- with or without display,
- with one or two channels,
- fixed or attached sensors,
- for temperature or temperature and humidity,
- choice of sensors
- for mA or V,
- with internal or external antenna,
- for temperature from -200 to 400°C

Please see logger leaflet.

Installation

The data loggers do not need any special installation as they are battery operated. They can hang or lie down where they are needed. Easy!

Files

The wireless T-TEC data loggers have very large memory. 'Start logger' starts a new file. When downloaded, the file is kept in a database on the PC and new downloads are added to form a continuous file. Files are encrypted and tamper proof, complying with CFR21 chapter 11. IoT security built -in.

Gateway

Must be connected to a USB port or WiFi with power adapter. It is listening for the loggers in the system and communicating with them as required. The Gateway can have a relay for alarms.

Cloud

If cloud access is enabled, files will also be sent to remote storage of your choice, This can be your own local server or elsewhere. Other PCs can then remotely access the files subject to password.

